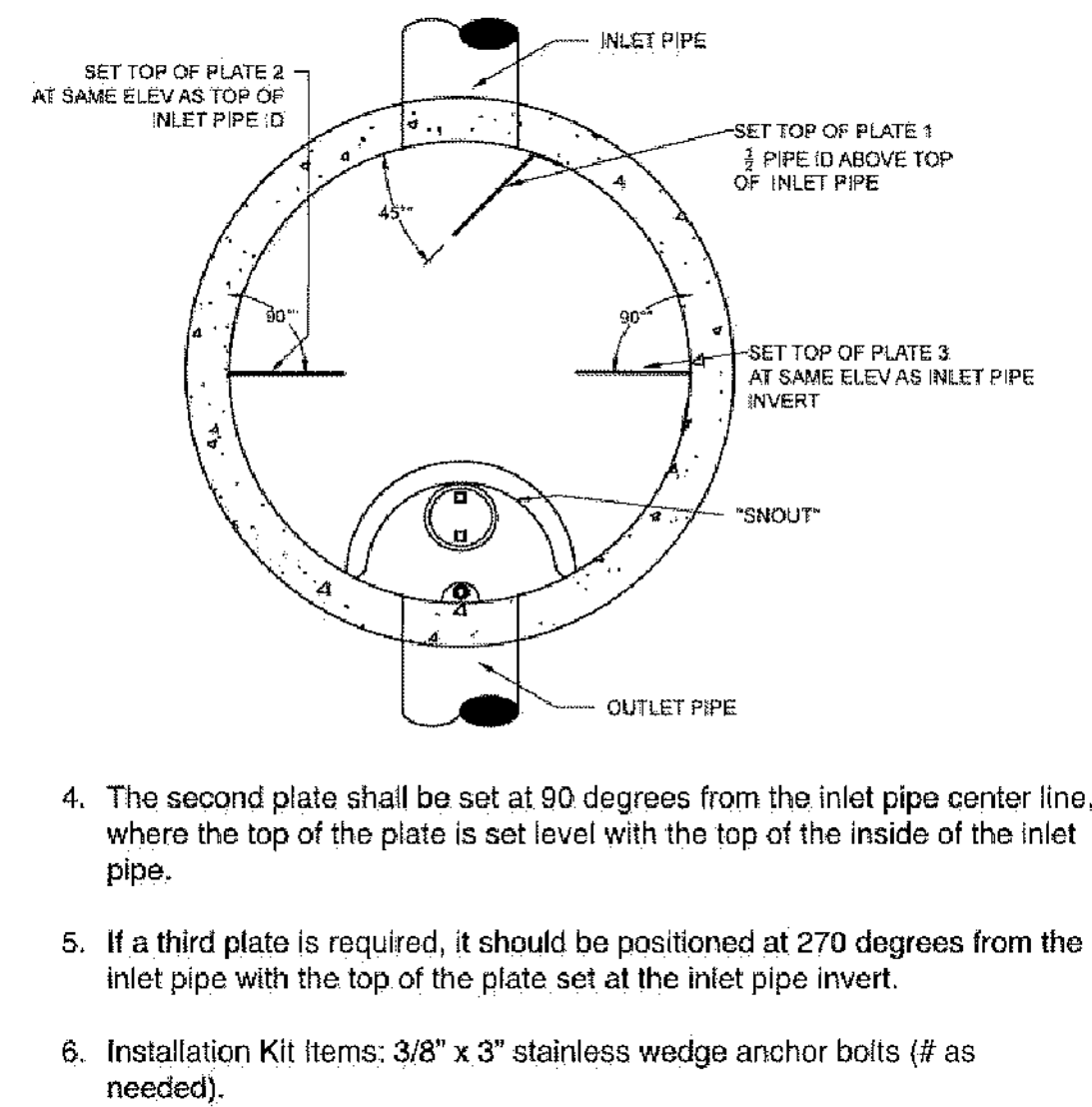


- Best Management Products, Inc.**
US and International Patents Pending
- TURBO PLATE INSTALLATION INSTRUCTIONS**
- All Turbo Plates should be positioned vertically such that the mounting flange is perpendicular to the bottom of the structure.
 - The top of the first plate (solid) should be placed 1/2 of the pipe diameter above the top of the ID of inlet pipe (e.g. if the pipe is 12" ID, place top of plate 6" above inside diameter of pipe).
 - The plates should be oriented in the desired direction of flow, where the first plate directs flow to the second plate.

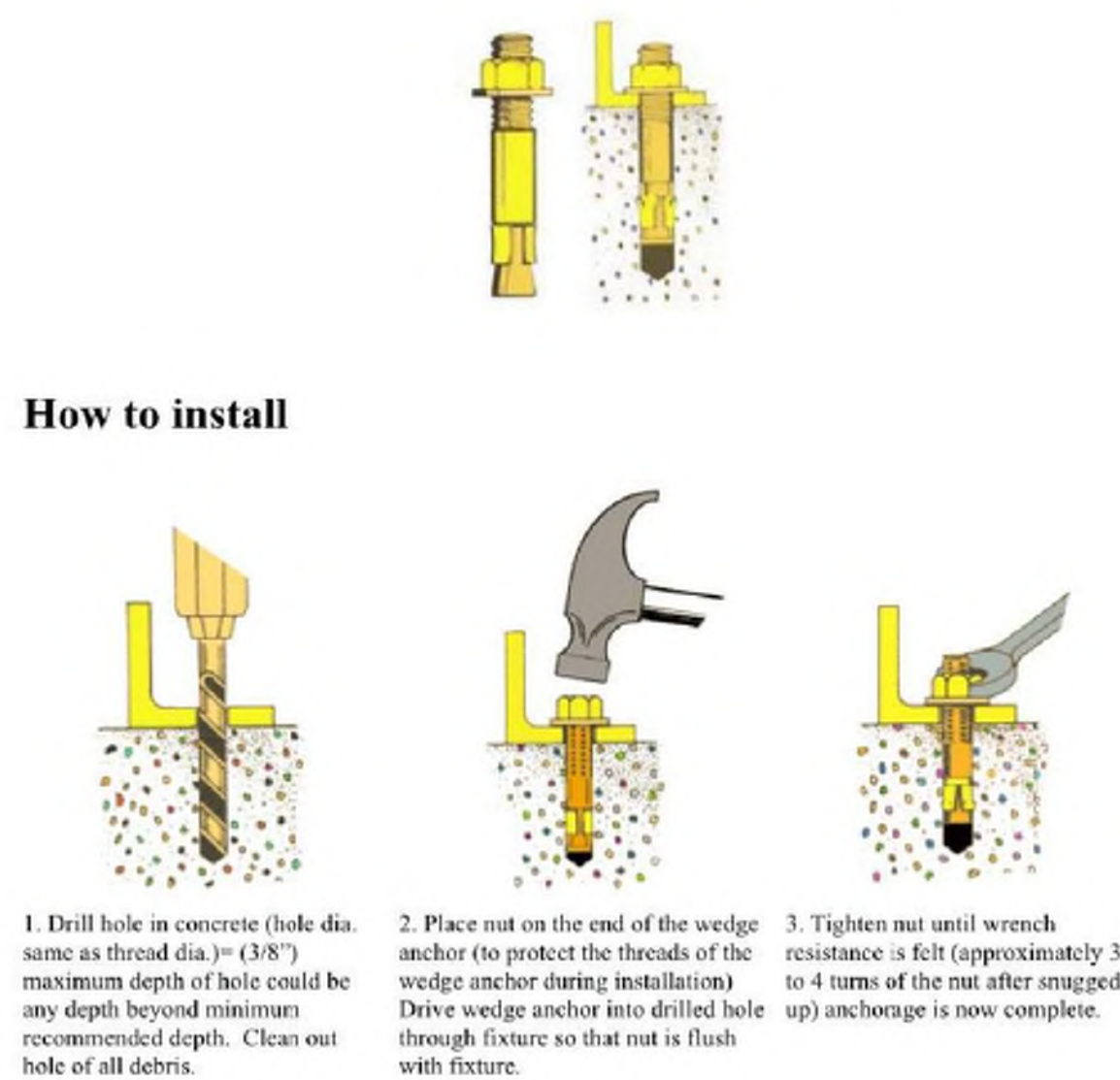


NOTE: Please check packing material for entire contents of shipment.

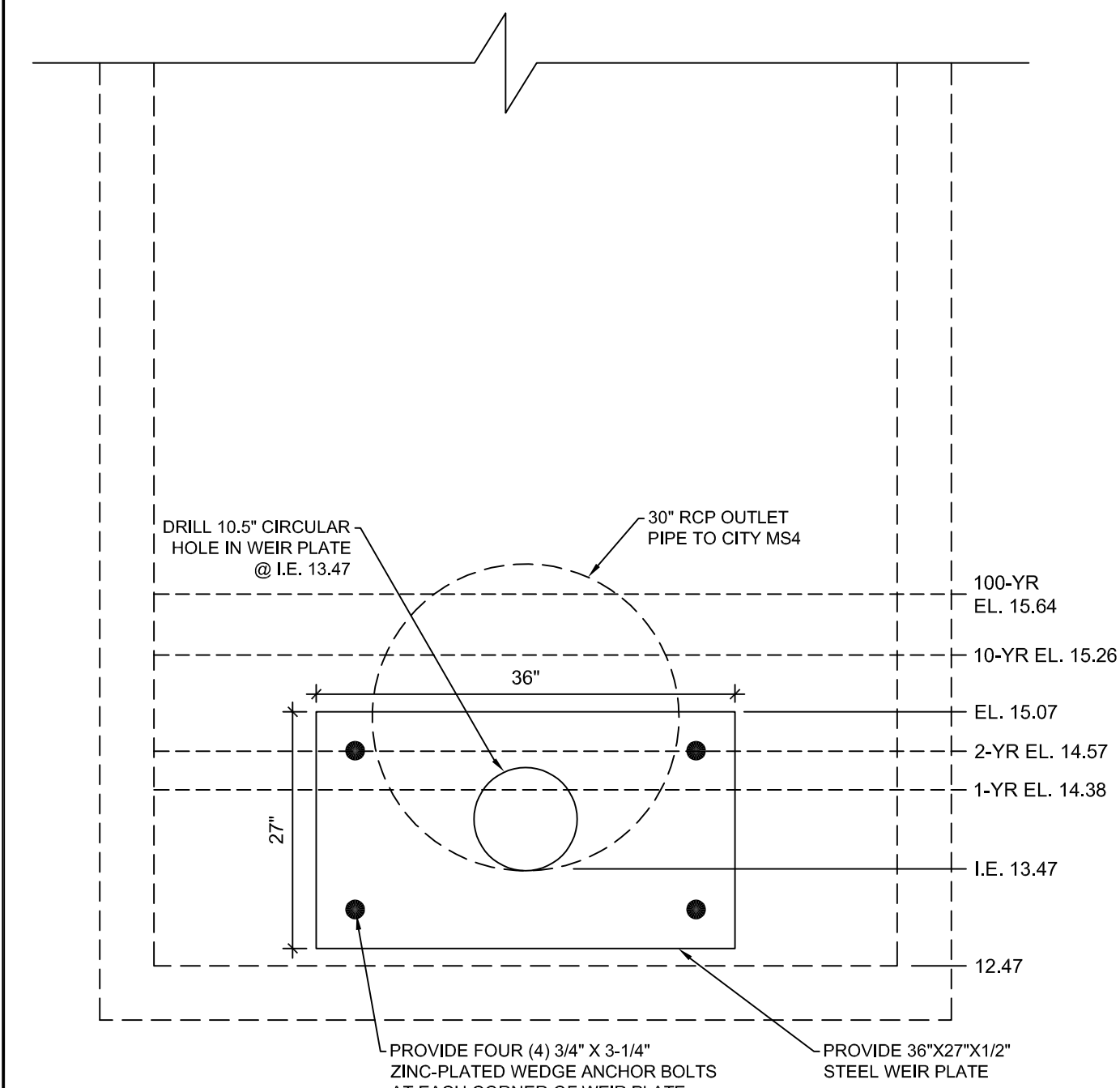
9 Mathews Drive, Unit A1-A2, East Haddam, CT 06423 / 888.434.0277
www.bmpinc.com

Best Management Products, Inc.
US and International Patents Pending

Concrete Wedge Anchor Installation



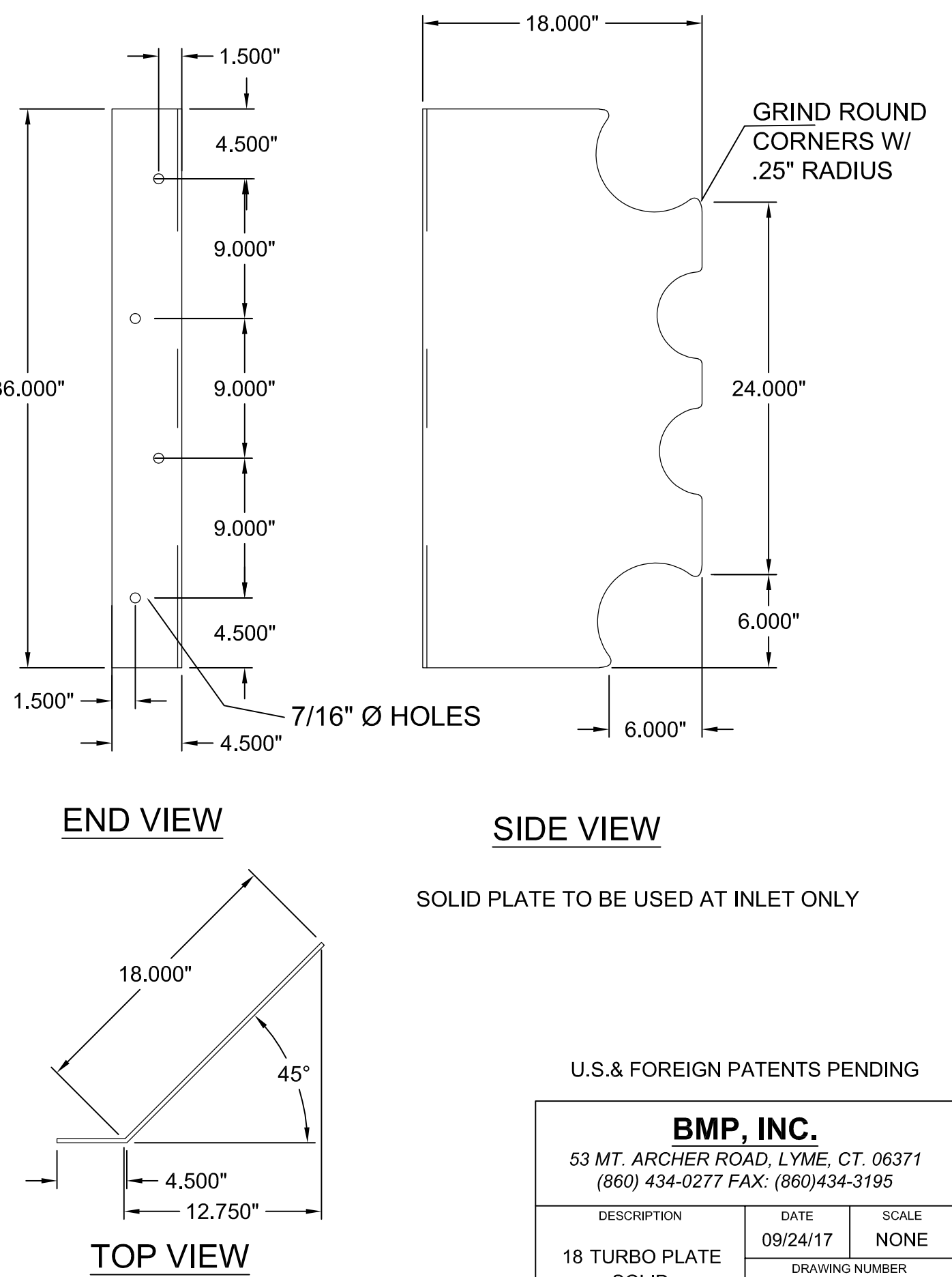
9 Mathews Drive, Unit A1-A2, East Haddam, CT 06423 / 888.434.0277
www.bmpinc.com



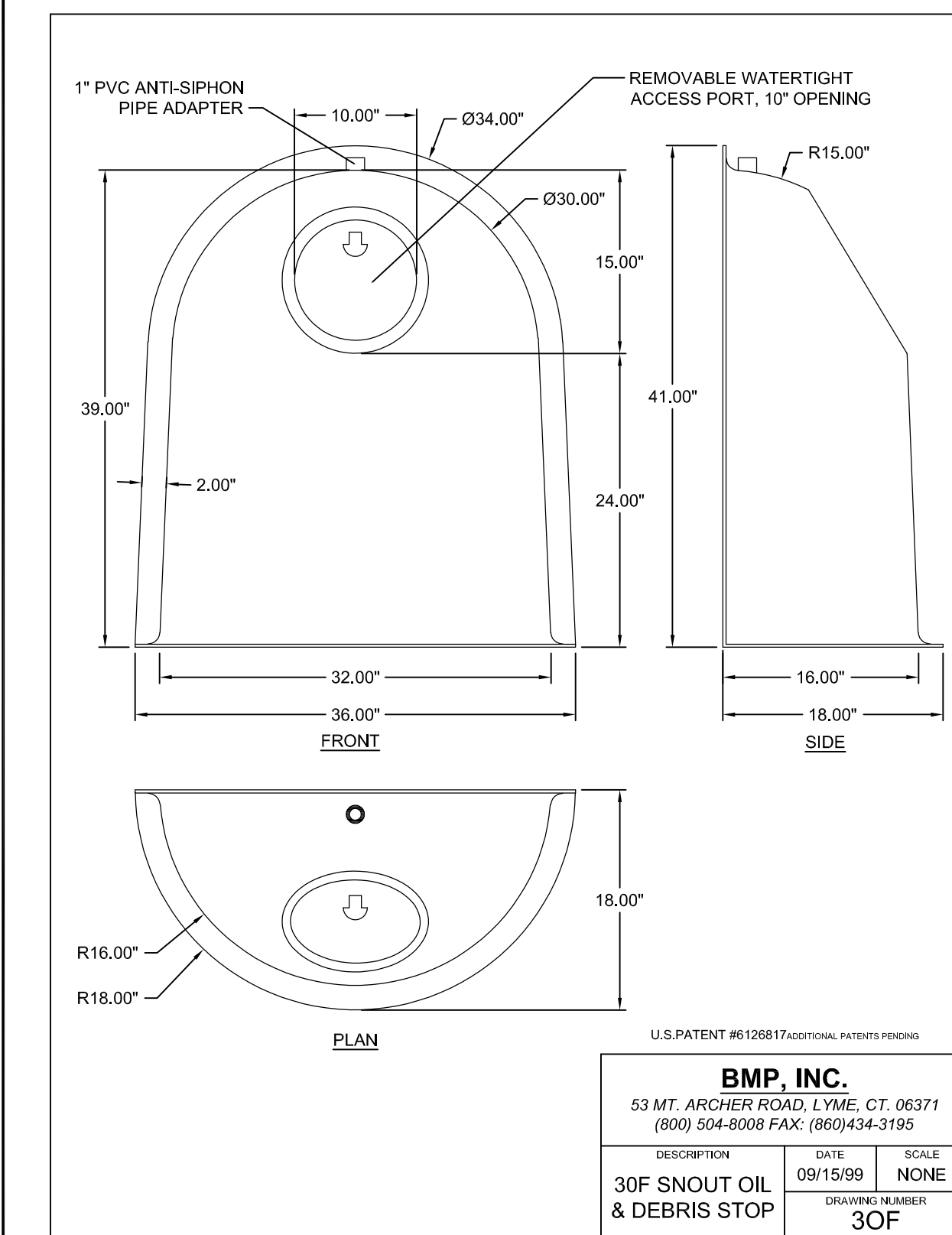
WEIR PLATE DETAIL - LOOKING DOWNSTREAM

N.T.S.

2



1 TURBO PLATE
NTS



3 SNOUT DETAIL
NTS



PANDA EXPRESS, INC.
1683 Walnut Grove Ave.
Rosemead, California
91770
Telephone: 626.799.9898
Facsimile: 626.372.8288

All ideas, designs, arrangement and plans indicated or represented by this drawing are the property of Panda Express Inc. and were created for use on this specific project. None of these ideas, designs, arrangements or plans may be used by or disclosed to any person, firm, or corporation without the written permission of Panda Express Inc.

REVISIONS:

ISSUE DATE:

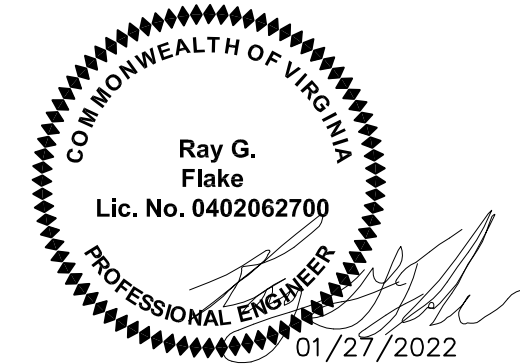
1	PERMIT/BID SET	02-12-21
2	CITY COMMENTS	08-17-21
3	CITY COMMENTS	10-22-21
4	CITY COMMENTS	12-15-21
5	CITY COMMENTS	01-27-22
	ISSUE FOR BID (DT)	02-04-22

DRAWN BY: LEB

PANDA PROJECT #: S8-21-D8164

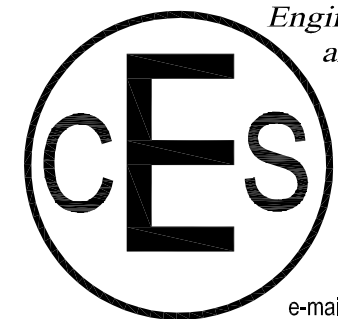
PANDA STORE #: D-8164

ARCH PROJECT #: XXXXX-XXX



Civil Engineering Services

Engineering, Land Planning,
and Environmental



7705 Spicer Farm Lane
Fairview, Tennessee
37062
Phone: (615) 533-0401

e-mail: ray@civilengineeringservices.net

PANDA EXPRESS

TRUE WARM AND WELCOME
6104 JEFFERSON AVENUE
NEWPORT NEWS, VA 23605

GRADING DETAIL SHEET

C05.3

TRUE WARM & WELCOME 2300 R2

XX-XX-XX