



PANDA RESTAURANT GROUP INC.  
1683 Walnut Grove Ave.  
Rosemead, California  
91770  
Telephone: 626.799.9898  
Facsimile: 626.372.8288

All ideas, designs, arrangement and plans indicated or represented by this drawing are the property of Panda Express Inc. and were created for use on this specific project. None of these ideas, designs, arrangements or plans may be used by or disclosed to any person, firm, or corporation without the written permission of Panda Express Inc.

REVISIONS:	
ISSUE DATE:	
1	04.29.2021 ISSUE FOR PERMIT
2	06.04.2021 ISSUE FOR BID

DRAWN BY: JDV

PANDA PROJECT #: - S8-22-D8135

C&P PROJECT #: - 2200775



06.04.2021

PANDA EXPRESS

TRUE WARM AND WELCOME 2300  
SKYBROOKE BOULEVARD & STATE ROAD 54  
LUTZ, FL 33558

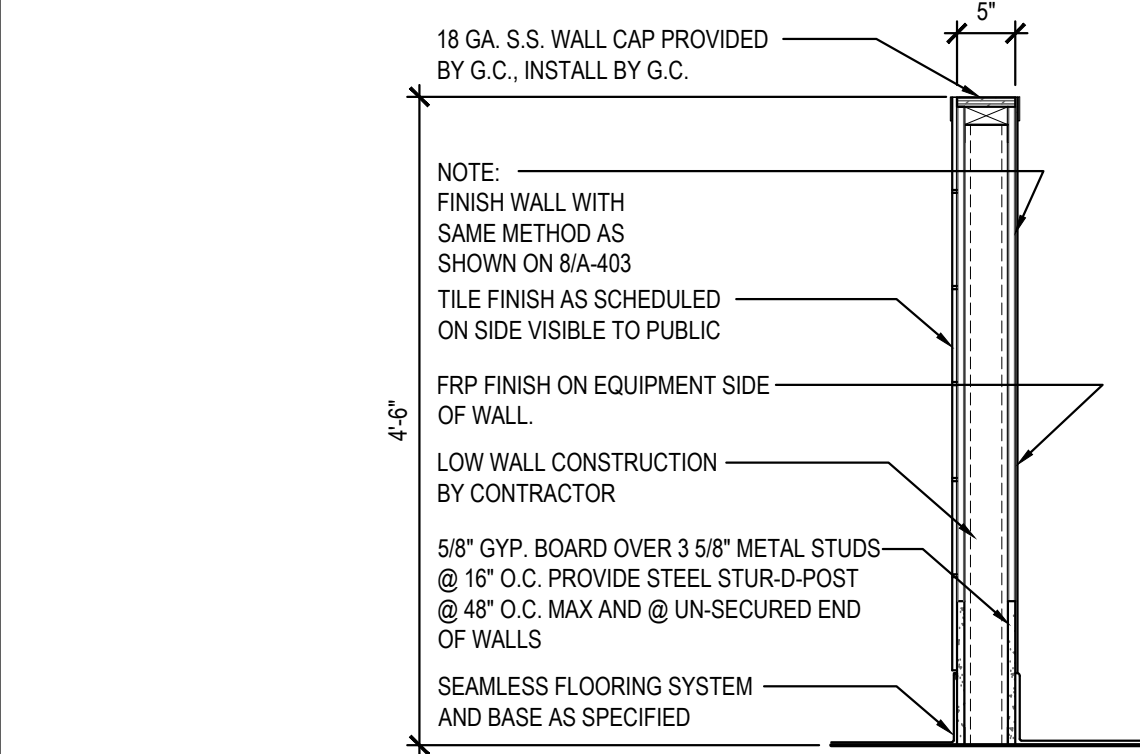
A-402

ARCHITECTURAL DETAILS

TRUE WARM & WELCOME 2300 R4

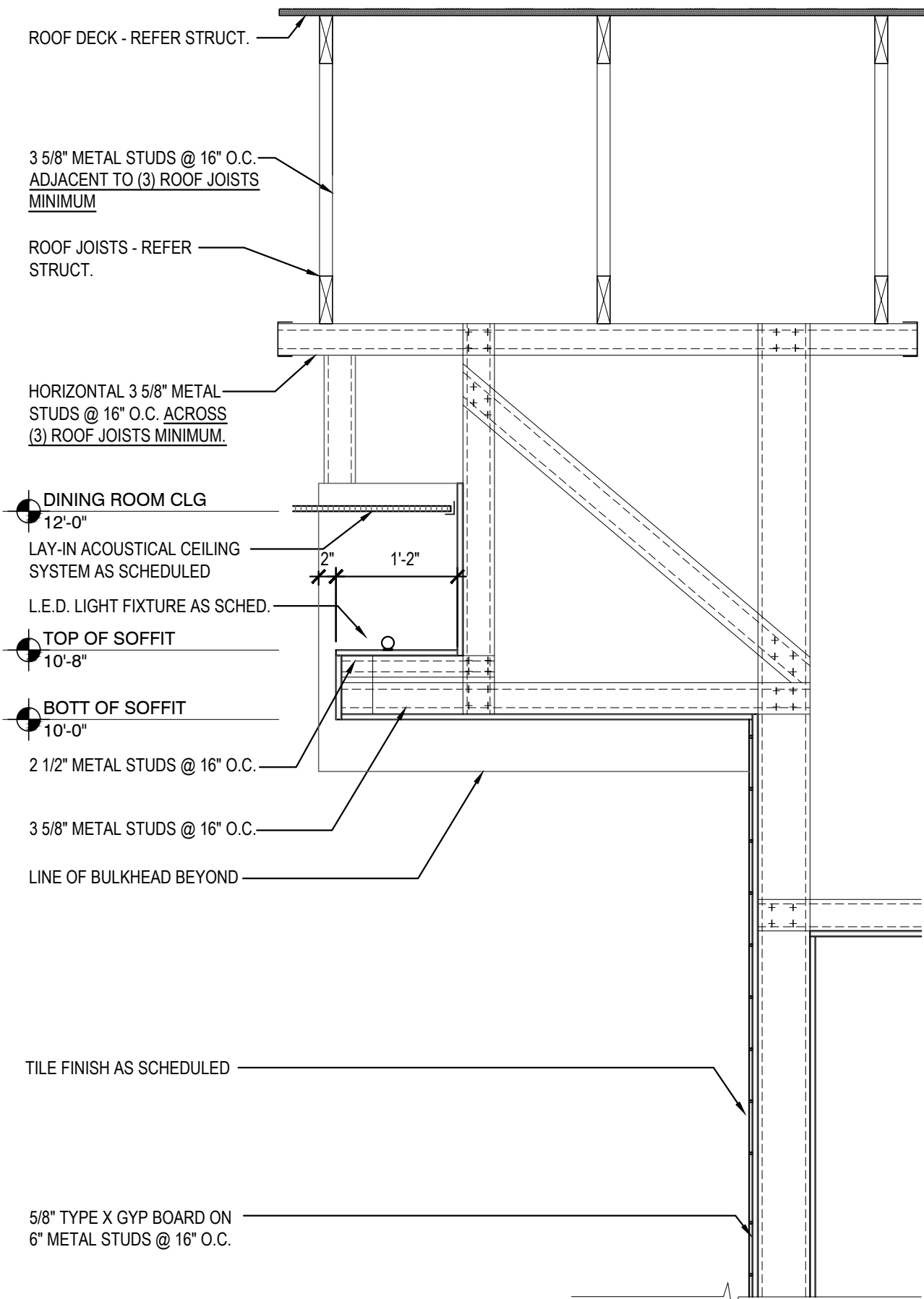
NOT USED 3

Scale= NTS A-402



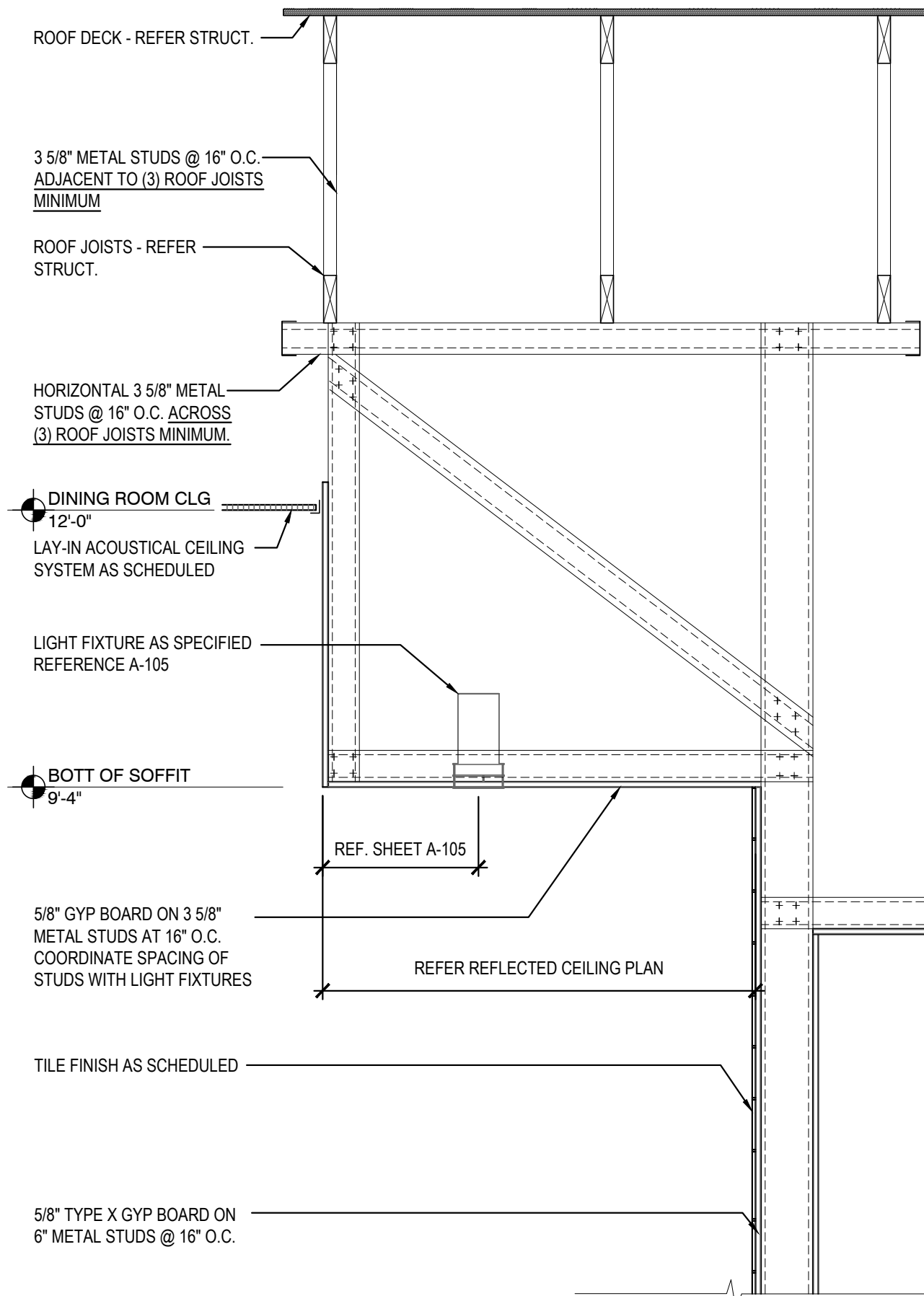
LOW WALL DETAIL 2

Scale= 3/4" = 1'-0" A-402



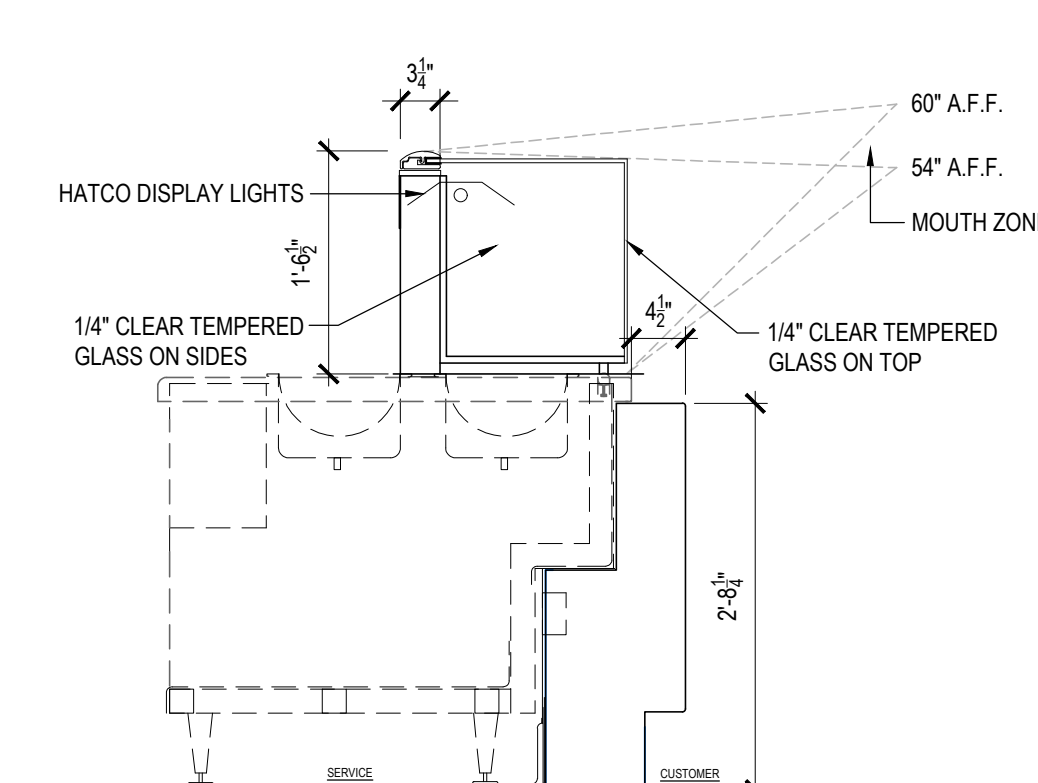
BEVERAGE STATION SOFFIT DETAILS 9

Scale= 3/4" = 1'-0" A-402



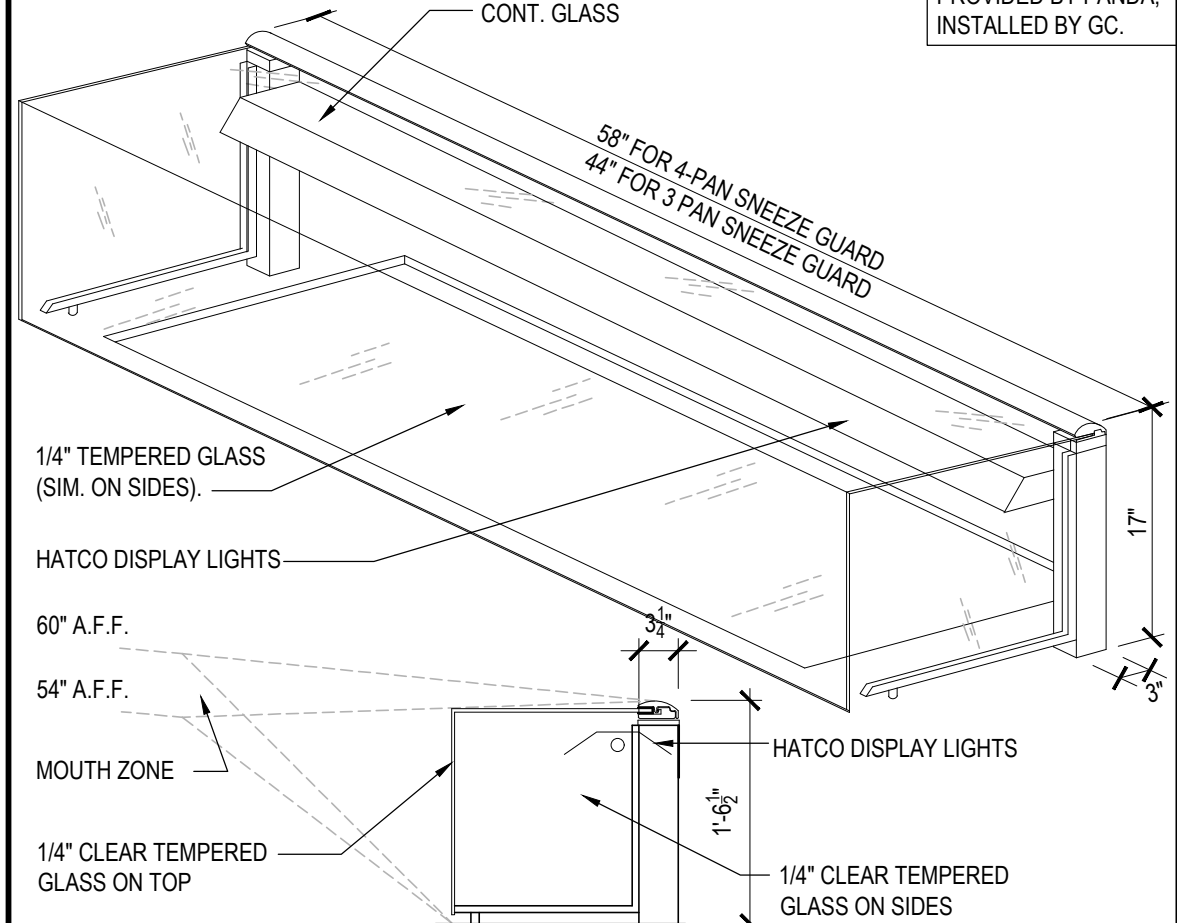
BEVERAGE STATION SOFFIT DETAILS 10

Scale= 3/4" = 1'-0" A-402



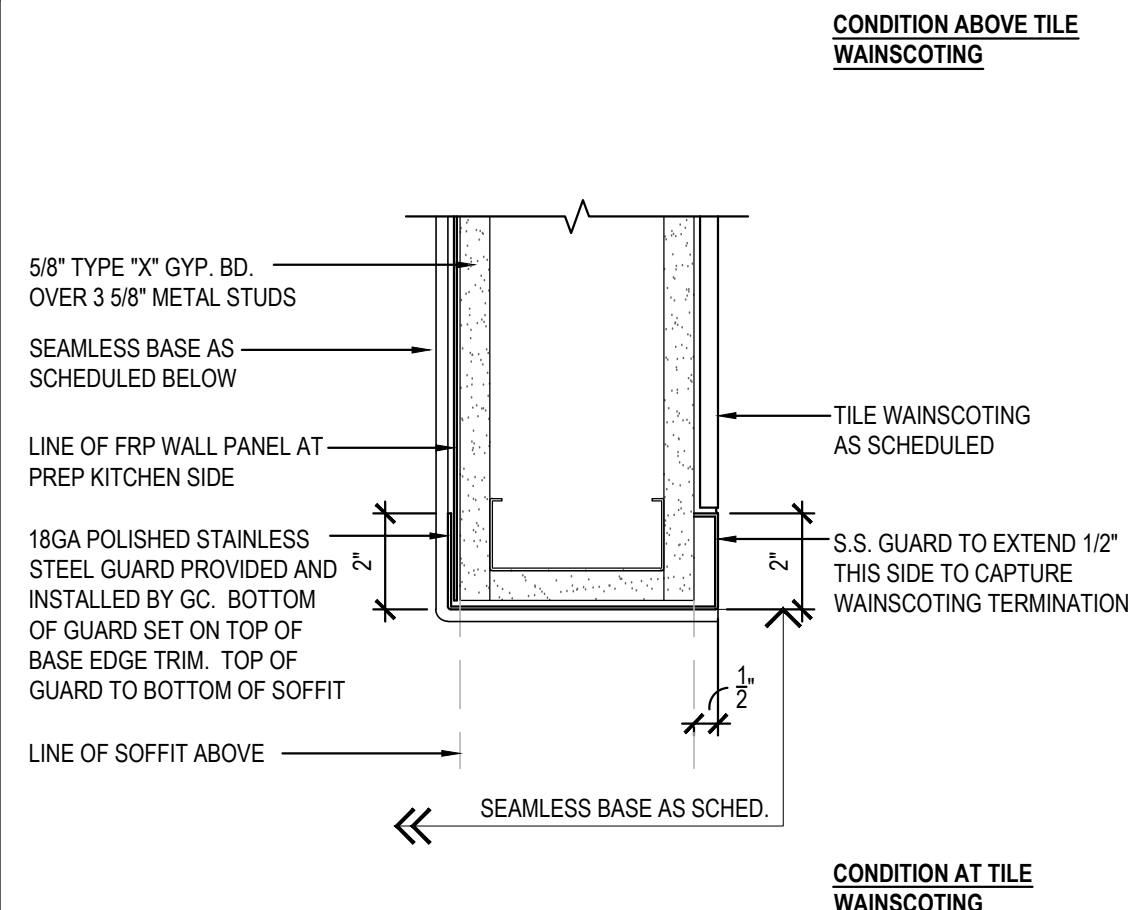
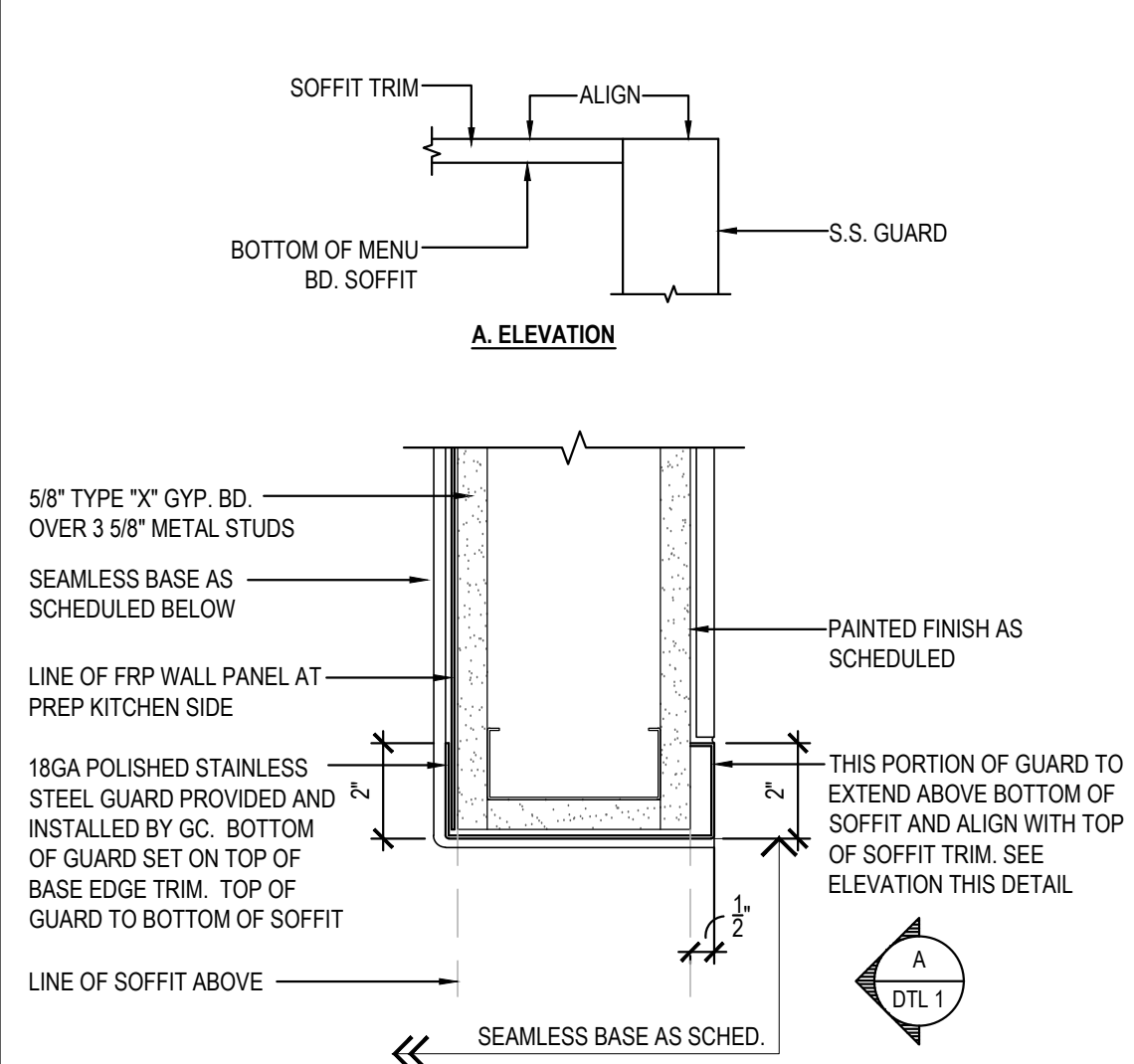
SNEEZE GUARD DETAIL 5

Scale= NTS A-402



SNEEZE GUARD DETAIL 6

Scale= NTS A-402



CORNER GUARD DETAIL 1

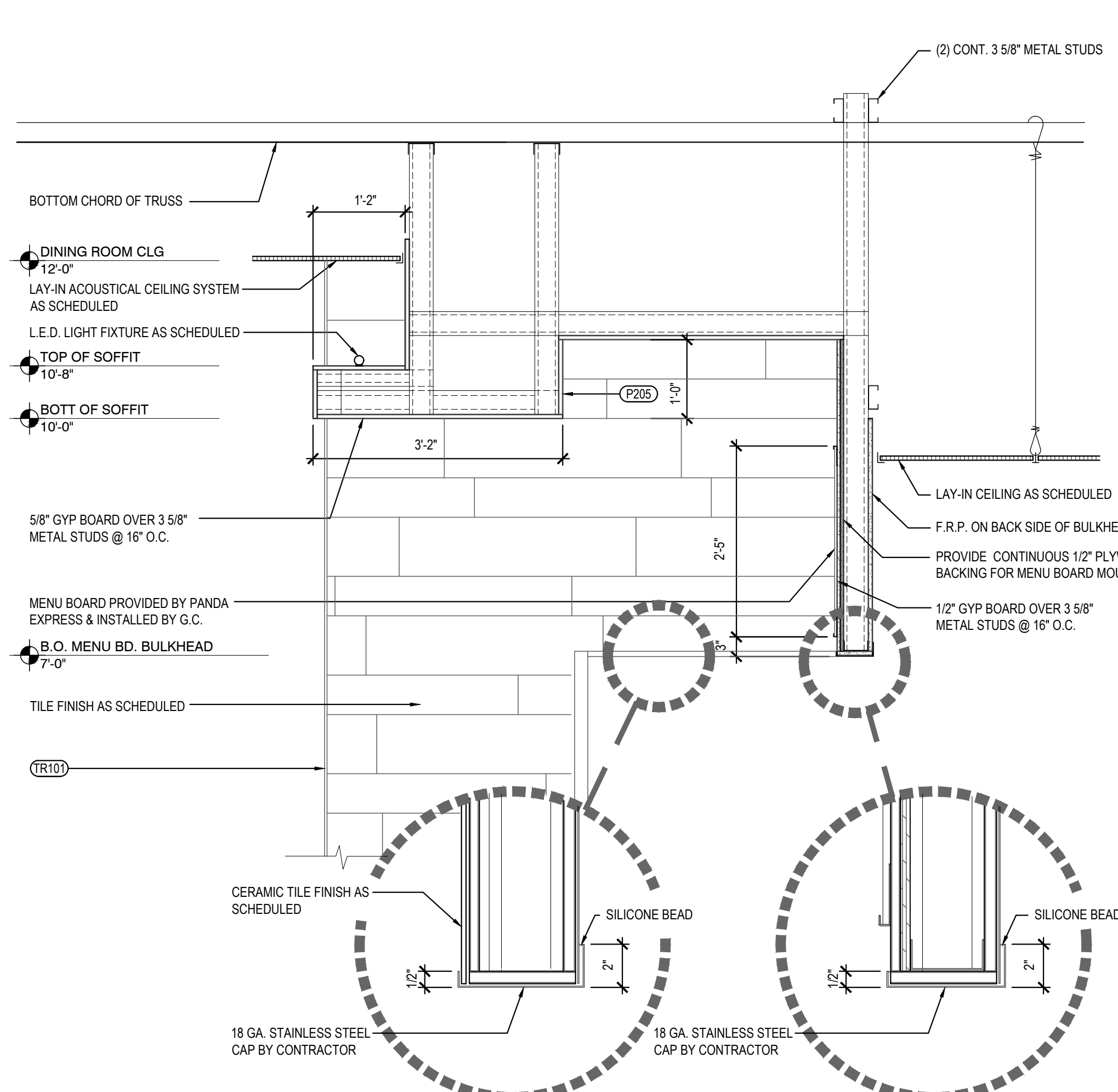
Scale= 3" = 1'-0" A-402

NOT USED 4

Scale= 1 1/2" = 1'-0" A-402

NOT USED 7

Scale= 1 1/2" = 1'-0" A-402



SERVICE COUNTER SOFFIT DETAILS 8

Scale= 3/4" = 1'-0" A-402