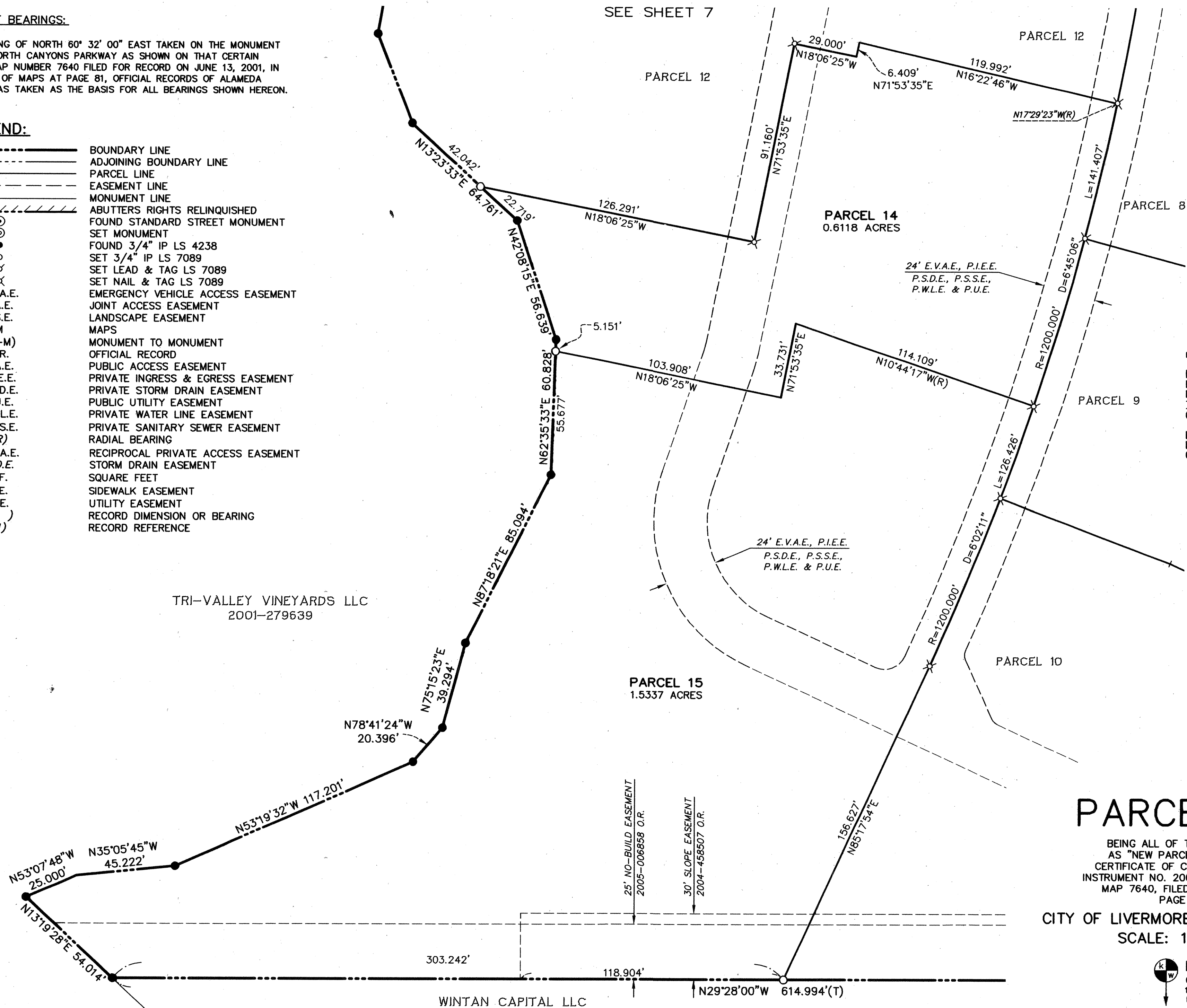


# BASIS OF BEARINGS:

THE BEARING OF NORTH 60° 32' 00" EAST TAKEN ON THE MONUMENT LINE OF NORTH CANYONS PARKWAY AS SHOWN ON THAT CERTAIN PARCEL MAP NUMBER 7640 FILED FOR RECORD ON JUNE 13, 2001, IN BOOK 256 OF MAPS AT PAGE 81, OFFICIAL RECORDS OF ALAMEDA COUNTY WAS TAKEN AS THE BASIS FOR ALL BEARINGS SHOWN HEREON.

## LEGEND:

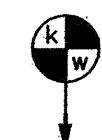
---	BOUNDARY LINE
---	ADJOINING BOUNDARY LINE
---	PARCEL LINE
---	EASEMENT LINE
---	MONUMENT LINE
---	ABUTTERS RIGHTS RELINQUISHED
⊙	FOUND STANDARD STREET MONUMENT
●	SET MONUMENT
○	FOUND 3/4" IP LS 4238
○	SET 3/4" IP LS 7089
×	SET LEAD & TAG LS 7089
×	SET NAIL & TAG LS 7089
⊗	EMERGENCY VEHICLE ACCESS EASEMENT
⊗	JOINT ACCESS EASEMENT
⊗	LANDSCAPE EASEMENT
M	MAPS
(M-M)	MONUMENT TO MONUMENT
O.R.	OFFICIAL RECORD
P.A.E.	PUBLIC ACCESS EASEMENT
P.I.E.E.	PRIVATE INGRESS & EGRESS EASEMENT
P.S.D.E.	PRIVATE STORM DRAIN EASEMENT
P.U.E.	PUBLIC UTILITY EASEMENT
P.W.L.E.	PRIVATE WATER LINE EASEMENT
P.S.S.E.	PRIVATE SANITARY SEWER EASEMENT
(R)	RADIAL BEARING
R.P.A.E.	RECIPROCAL PRIVATE ACCESS EASEMENT
S.D.E.	STORM DRAIN EASEMENT
S.F.	SQUARE FEET
S.E.	SIDEWALK EASEMENT
U.E.	UTILITY EASEMENT
( )	RECORD DIMENSION OR BEARING
(1)	RECORD REFERENCE



## PARCEL MAP 9356

BEING ALL OF THAT CERTAIN PARCEL OF LAND DESCRIBED AS "NEW PARCEL D" OF LOT LINE ADJUSTMENT 04-002, CERTIFICATE OF COMPLIANCE RECORDED OCTOBER 12, 2004 AS INSTRUMENT NO. 2004-458504, AND ALL OF PARCEL E OF PARCEL MAP 7640, FILED JUNE 13, 2001 IN BOOK 256 OF MAPS AT PAGE 81, ALAMEDA COUNTY RECORDS.

CITY OF LIVERMORE - ALAMEDA COUNTY - CALIFORNIA  
SCALE: 1"=30' SEPTEMBER 2008



KIER & WRIGHT  
CIVIL ENGINEERS & SURVEYORS, INC.  
1233 Quarry Lane, Suite 145 Phone (925) 249-6555  
Pleasanton, California 94566 Fax (925) 249-6563

JOB NO. A06558

SHEET 6 OF 8 SHEETS