

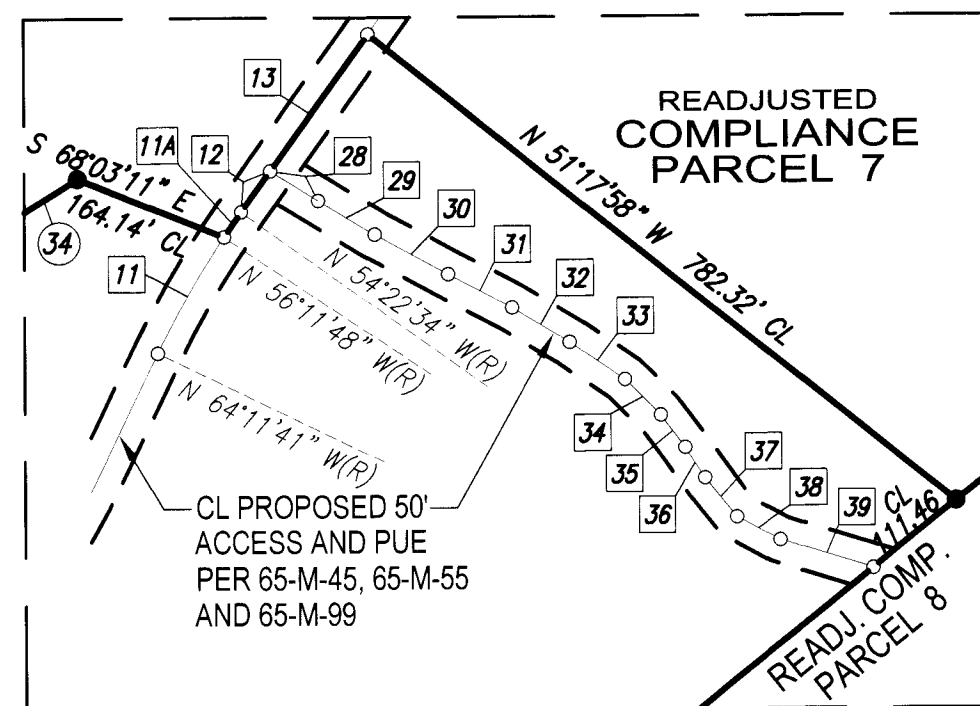
# RECORD of SURVEY BOUNDARY LINE ADJUSTMENT

for  
JTS INVESTMENTS, LP,  
a California limited partnership  
2010-0001187

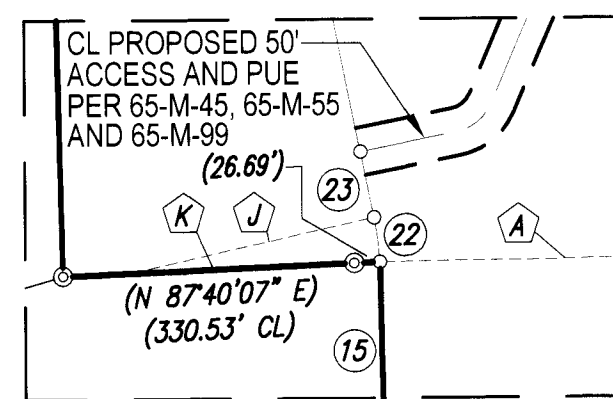
BEING A PORTION OF THE SW 1/4 SECTION 9 AND THE NW AND SW 1/4 SECTION 16  
AND THE NW 1/4 SECTION 21, T. 7 N., R. 10 E., M. D. M.  
COUNTY OF AMADOR, STATE OF CALIFORNIA



October, 2021



DETAIL "A"  
Scale: 1" = 200'



DETAIL "B"  
Scale: 1" = 200'

## SURVEYOR'S STATEMENT

THIS MAP CORRECTLY REPRESENTS A SURVEY MADE BY ME OR UNDER MY DIRECTION IN CONFORMANCE WITH THE REQUIREMENTS OF THE PROFESSIONAL LAND SURVEYORS ACT AT THE REQUEST OF KEVIN WALKER IN JUNE OF 2021.

DATE: DECEMBER 8, 2021

CIRO L. TOMA P.L.S. 3570  
MY LICENSE EXPIRES 6-30-2022



## COUNTY SURVEYOR'S STATEMENT

THIS MAP HAS BEEN EXAMINED IN ACCORDANCE WITH SECTION 8766 OF THE PROFESSIONAL LAND SURVEYORS ACT THIS 20th DAY OF DECEMBER, 2021.

ROGER R. PITTO PLS 4626  
AMADOR COUNTY SURVEYOR  
MY LICENSE EXPIRES 9-30-2022



## COMPLIANCE CERTIFICATE

THIS BOUNDARY LINE ADJUSTMENT IS IN COMPLIANCE WITH THE PROVISIONS OF THE SUBDIVISION MAP ACT, DIVISION 2 OF TITLE 7 OF THE GOVERNMENT CODE, BLA No. 2021-06 ON FILE IN THE AMADOR COUNTY SURVEYOR'S OFFICE, AND ANY APPLICABLE ORDINANCE ENACTED PURSUANT THERETO.

THIS ADJUSTMENT MUST BE COMPLETED IN ALL ASPECTS BY THE 20th DAY OF DECEMBER, 2022. THE EXCHANGE OF DEEDS OR COMPLIANCE CERTIFICATES MUST BE RECORDED BEFORE THE ABOVE DATE PER ORDINANCE No. 1445, CHAPTER 17.89 OF THE AMADOR COUNTY CODE.

DATE: 12/20/21

ROGER R. PITTO PLS 4626  
AMADOR COUNTY SURVEYOR  
MY LICENSE EXPIRES 9-30-2022

## RECORDER'S STATEMENT

FILED THIS 20th DAY OF December, 2021 AT 3:10 P.M.  
IN BOOK 66 OF MAPS AND PLATS AT PAGE 100 AT THE REQUEST OF  
THE AMADOR COUNTY SURVEYOR.

FEE: \$15.00 pd/fled

INSTRUMENT No.: 2021-0014035

KIMBERLY L. GRADY  
AMADOR COUNTY RECORDER

BY:   
DEPUTY