

BK 55 PG 87

Document Number CR 3878

County of ALAMEDA, California


## COORDINATES (Optional)

N. 445 989

E. 1632964

Zone            NAD27 ☐ NAD83 ☐

NAD 83 Epoch \_\_\_\_\_

2000

Elev. \_\_\_\_\_

**Corner -** Left as found ☐ Found and tagged ☐ Established ☐ Reestablished ☒ Rebuilt ☐

In compliance with Section 8771 of the Professional Land Surveyors' Act, this corner record is being filed to  
ESTABLISH \_\_\_\_ / REESTABLISH X the position of an existing monument PRIOR \_\_\_\_ / SUBSEQUENT X  
to street or highway reconstruction. *(Use this portion only when applicable.)*

Identification and type of corner found: Evidence used to identify or procedure used to establish or reestablish the corner:

CR 3725 WAS USED AS THE BASIS FOR RE-ESTABLISHING THE MONUMENT'S ORIGINAL LOCATION, AS FOLLOWS: REF. PTS. 1 & 3 AND REF. PTS. 2 & 4 (DIAGONAL PAIRS) WERE FOUND UNDISTURBED.

A description of the physical condition of the monument as found and as set or reset: SET COUNTY DISK  
STAMPED KH41P2 ~~WAS~~ @ THE INTERSECTION OF THESE 2  
DIAGONAL LINES. SEE PL. 2,  
N. LIVERMORE AVE. STA. 99+09.06

### SURVEYOR'S STATEMENT

This Corner Record was prepared by me or under my direction in conformance with the Land Surveyors' Act on AUGUST 28, 20 09.

Signed Kobert A. Macdonald (L.S.) or R.C.E. Number 7380



## COUNTY SURVEYOR'S STATEMENT

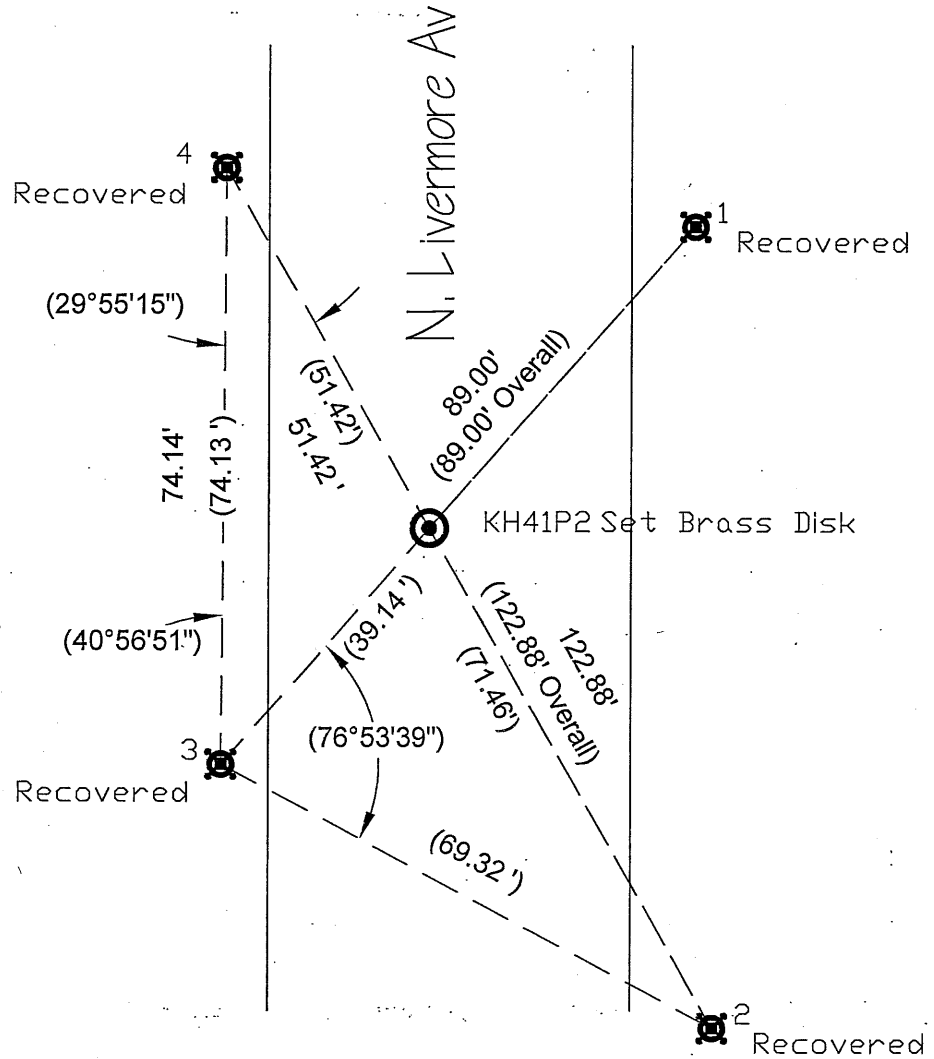
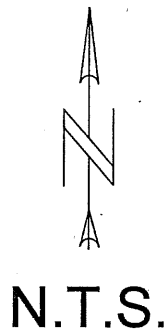
This Corner Record was received AUGUST 28, 20 09 and examined  
and filed 11-15 20 13.

Signed [Signature] Title County Surveyor



### County Surveyor's Comment

KH 41 P 2



### Legend

Found:  $\frac{1}{2}$ " Rebar w/Plastic Cap



Set: Standard County Brass Disk



Data from CR 3725 shown (TYP.)

(##.##)

### Credits

Lead: Robert Machado

Assist.: Benjamin Arcibal

Computations: Joanne Fetzer

CAD: reid

File-Name: CR3878\_CR3725\_Thursday\_20090728 CR Page 2 with dxf.dwg

Job#: R23343

### Reference(s)

#### **CR 3725**

RS for Alignment of North Livermore Avenue

RS Bk 4 Pg 55-69 Sht 8 of 15

Alameda County Monument Id System (PTa...) **KH41P2**