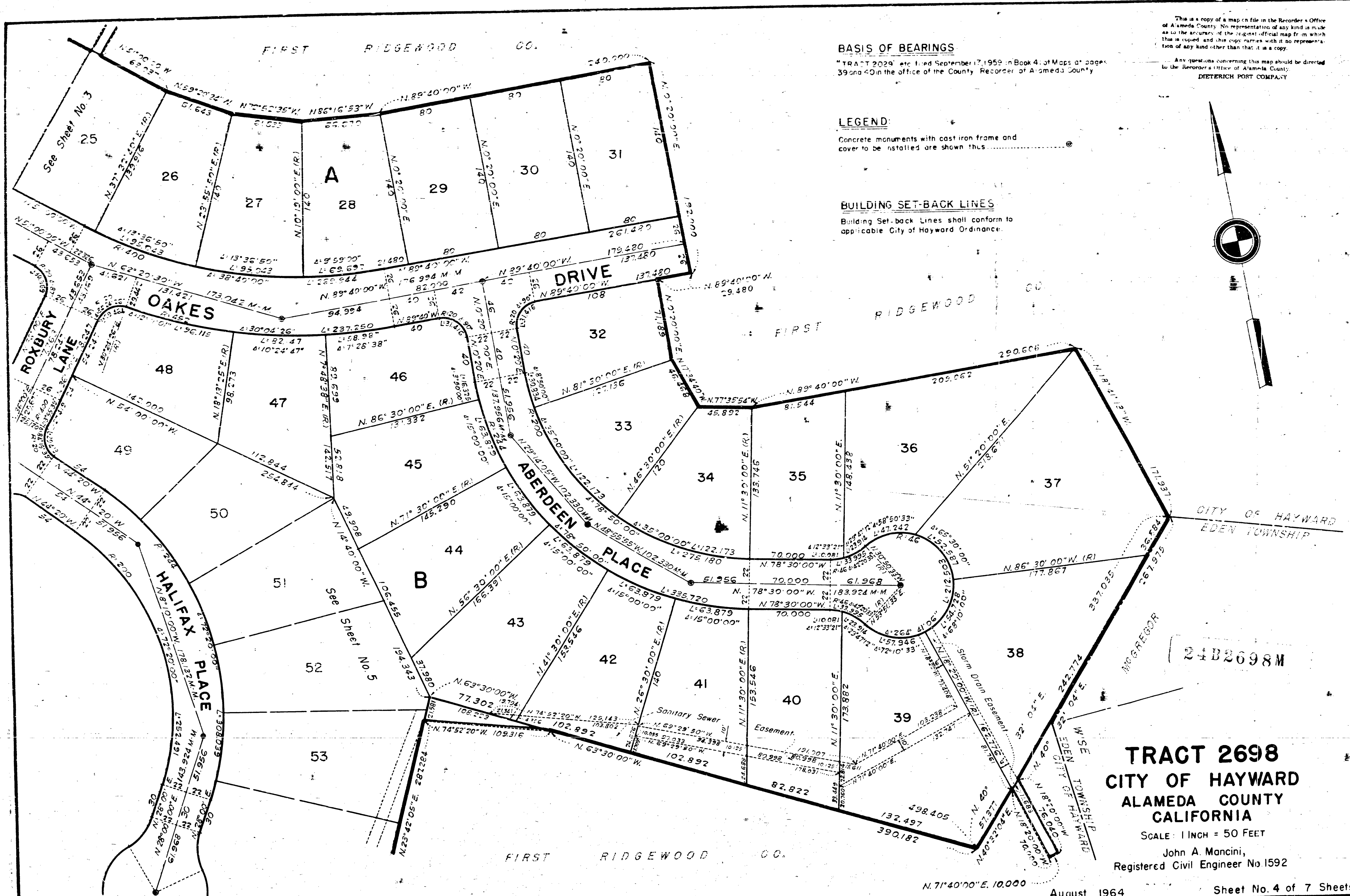


50-27015

50-12-15

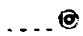
TR 2698



**BASIS OF BEARINGS**

"TRACT 2029" etc. filed September 17, 1959 in Book 4 of Maps of pages 39 and 40 in the office of the County Recorder of Alameda County

**LEGEND**

Concrete monuments with cast iron frame and cover to be installed are shown thus: 

**BUILDING SET-BACK LINES**

Building Set-back Lines shall conform to applicable City of Hayward Ordinance.

This is a copy of a map on file in the Recorder's Office of Alameda County. No representation of any kind is made as to the accuracy of the original official map from which this is copied, and this copy carries with it no representation of any kind other than that it is a copy.  
Any questions concerning this map should be directed to the Recorder's Office of Alameda County.  
DIETERICH POST COMPANY

**TRACT 2698**  
**CITY OF HAYWARD**  
**ALAMEDA COUNTY**  
**CALIFORNIA**

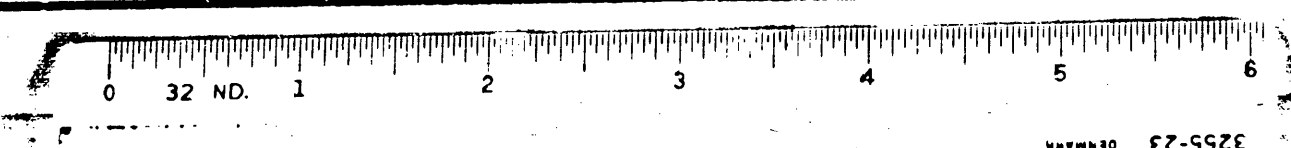
SCALE: 1 INCH = 50 FEET

John A. Mancini,  
Registered Civil Engineer No. 1592

August, 1964

Sheet No. 4 of 7 Sheets

AX 33615 FILED MARCH 11, 1965 BOOK 50 PAGES 12 TO 15



465