

CORNER RECORD

Agency Index

BOOK 133 PAGE 41

Document Number

CR 13974

City of BERKELEYCounty of ALAMEDA, California

Brief Legal Description

CITY OF BERKELEY (C.O.B.) MONUMENT B2433 AS SHOWN UPON THE C.O.B. ANNOTATED MAP OF SAN LUIS COURT PLAN 20114 NEAR 1965 SAN ANTONIO AVENUE.

CORNER TYPE

COORDINATES (Optional)

RANCHO
SAN
ANTONIO
(V & D PERALTA)Government Corner ☐ Control
Meander ☐ Property
Rancho ☐ Other

N. _____ E. _____

☒ Elevation _____Units Metric ☐ U.S. Survey Foot ☒☐ Horizontal Datum _____

Zone _____ Epoch Date _____

Vertical Datum _____

Date of Survey 12/20/2019☐ Complies with Public Resources Code §§8801-8819☐ Complies with Public Resources Code §§8890-8902PLS Act Ref: ☐ 8765(d) ☒ 8771 ☐ 8773 ☐ Other:Corner/
Monument: ☒ Left as found ☐ Established ☐ Rebuilt ☒ Pre-Construction
☐ Found and tagged ☐ Reestablished ☒ Referenced ☐ Post-Construction

Narrative of corner identified and monument as found, set, reset, replaced, or removed:

☒ See sheet #2 for description (s):

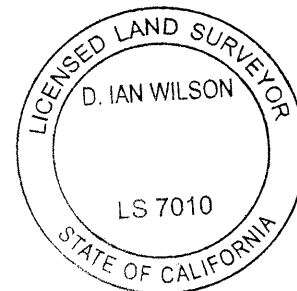
FOUND MONUMENT THAT COULD BE DAMAGED OR DESTROYED BY A PROPOSED ELECTRIC UNDERGROUND CONSTRUCTION PROJECT. MONUMENT WAS REFERENCED AS SHOWN ON PAGE 2 OF 2.

THE PURPOSE OF THIS CORNER RECORD IS TO PRESERVE THE LOCATION OF THE MONUMENT PRIOR TO CONSTRUCTION. NO ATTEMPT WAS MADE TO DETERMINE THE RELATIONSHIP BETWEEN THE MONUMENT AND BOUNDARY LINES OR OTHER MONUMENTS.

SURVEYOR'S STATEMENT

This Corner Record was prepared by me or under my direction in conformance with
the Professional Land Surveyors' Act on APRIL 7, 2020Signed E. P. Kiel P.L.S. or R.C.E. No. 8911

COUNTY SURVEYOR'S STATEMENT

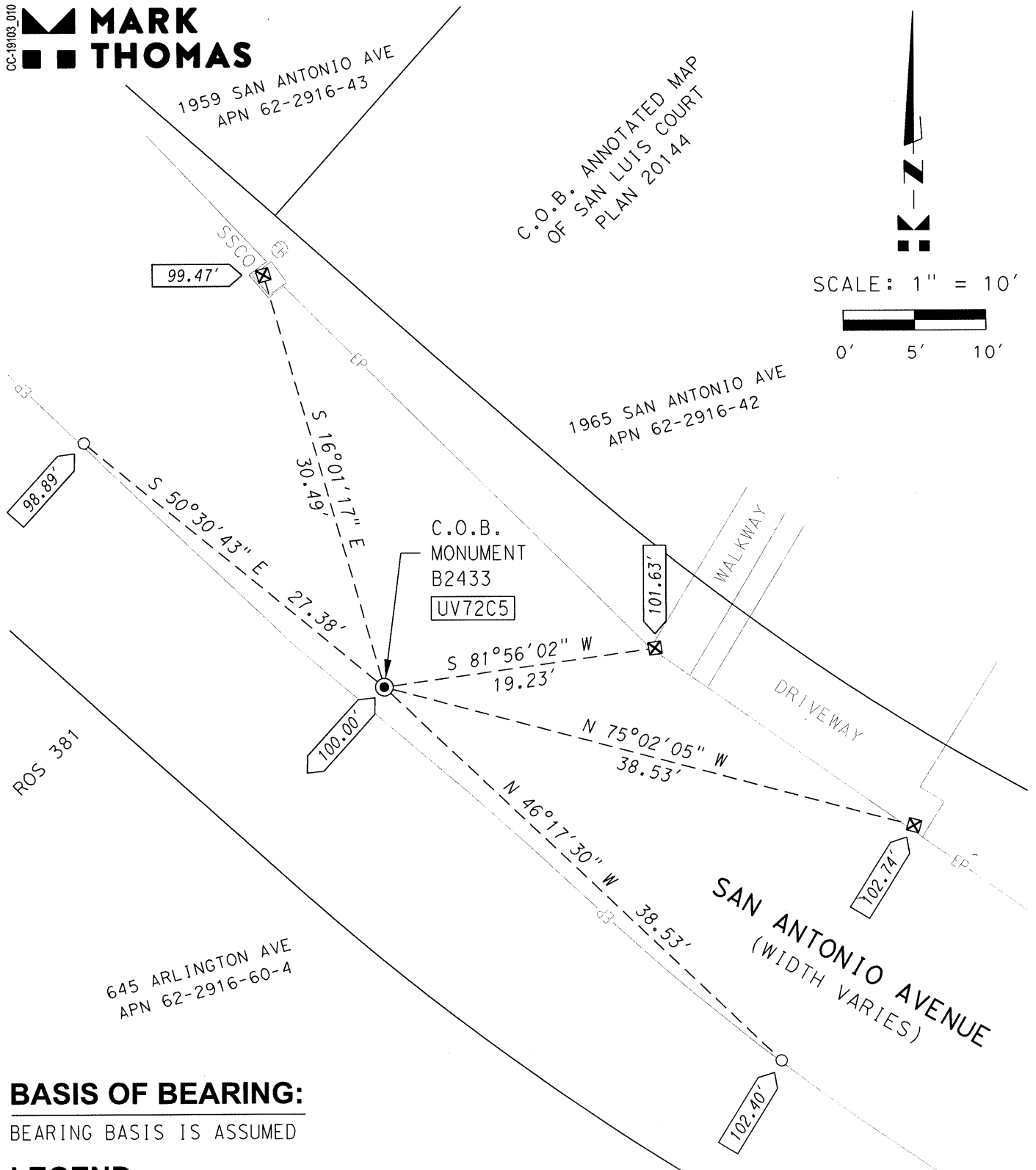
This Corner Record was received APR 15 2020
and examined and filed APR 15 2020Signed D. Ian Wilson P.L.S. or R.C.E. No. 7010Title ALAMEDA COUNTY SURVEYOR

County Surveyor's Comment _____

CC-19103_010



MARK THOMAS



BEARING BASIS IS ASSUMED

LEGEND:

- ☒ FOUND CITY OF BERKELEY (C.O.B.) MONUMENT, 1/4" PIN IN WELL
☒ SET CUT CROSS REFERENCE POINT IN CONCRETE
☐ SET MAG NAIL REFERENCE POINT IN A.C.

100.00' MONUMENT ELEVATION (ASSUMED)

XXX.XX' > REFERENCE POINT ELEVATION

UV72C5 ALAMEDA COUNTY MONUMENT IDENTIFICATION NUMBER: