

County Surveyors Office, Stanislaus County  
California

Swamp and Overflowed Lands.

Survey No. 85.

Township 3 South

Range 12 East

Sections 33, 28 and 34.

All between the United States  
Meander line and the left  
bank of the Tuolumne River  
in Section 33, 28 and the West  
1/2 of the North West 1/4 of Section  
34.

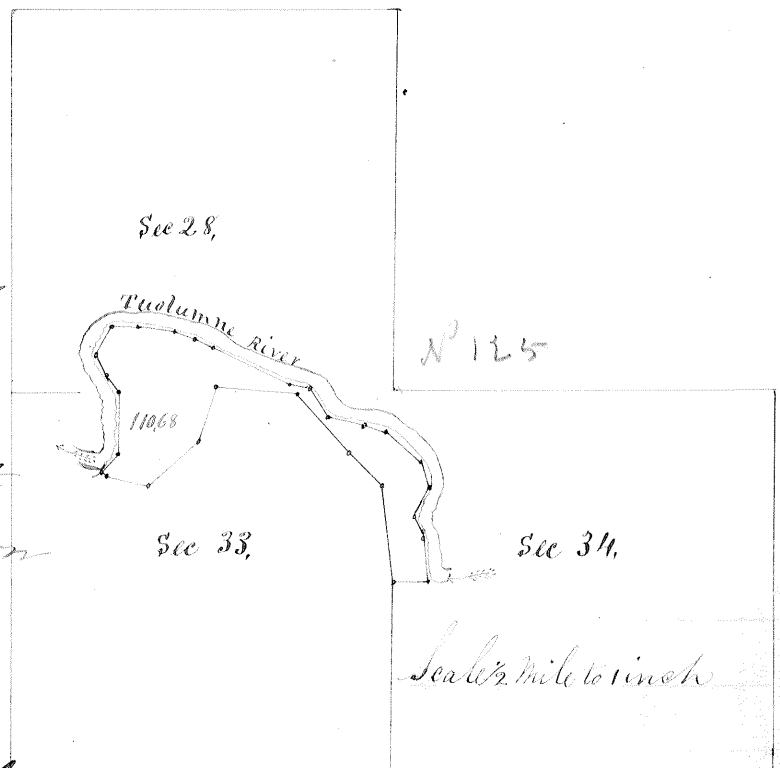
Base and Meridian of  
Mount Diablo.

Containing 110,68 Acres.

Surveyed February 2<sup>nd</sup> 1859 for  
Harvey B. Davis.

Field Notes.

Beginning at Meander Post on line between Sections  
33 and 34. Thence run on 1/4 Section line between the North  
West and South West quarter of Section 34. N 89 3/4° E 7.00 ch  
to the left bank of the Tuolumne River. Meander down  
Stream. Ran N 6 1/2° W 92.8 ch, North 1.64 ch, N 33° W 3.82 ch,  
N 25° E 7.15 ch, N 16 3/4° W 5.95 ch, N 45 1/2° W 9.76 ch, N 71 3/4° W 3.93 ch,  
N 77 1/2° W 7.50 ch, N 34 1/2° W 7.50 ch, N 82 3/8° W 4.56 ch, N 63 3/4° W 7.50  
ch, N 66 1/2° W 4.68 ch, N 72 1/2° W 4.24 ch, N 82 1/2° W 3.78 ch, S 87 1/4° W  
5.67 ch, S 25 3/4° W 4.26 ch, S 26° E 4.70 ch, S 35° E 4.46, S 1/4° W  
13.00 ch, S 41 1/2° W 5.00 ch to U.S. Meander line. Thence  
run on U.S. Meander line S 56 1/2° E 1.00 ch, S 76 1/2° E 9.00 ch,  
N 48 1/2° E 14.00 ch, N 18° E 12.00 ch, S 84° E 17.00 ch, S 41 1/2° E 16.50  
ch, S 44° E 10.00 ch, S 7 1/2° E 20.00 to the place of beginning.  
Run by the true Meridian. Magnetic Variation 15° 32' East  
Surveyed in accordance with the Act of the Legislature  
concerning Swamp and Overflowed Lands, approved  
April 21<sup>st</sup> 1858 and the instruction of the Surveyor  
General.



County Surveyor Stanislaus County

Rejected on the account of it conflicting with Survey No. 3 & having a  
that exceeds 1/2 mile

Recorded March 29<sup>th</sup> 1859

County Surveyor