

CORNER FOR SECTIONS
5, 6, 7 & 8
T. 2 S., R. 32 E., M.D.M.
U.S.G.L.O. BRASS CAP
N 645832.345
E 2177898.680

RECORD OF SURVEY

No. 35 - 17

R/W CENTERLINE
9 - MNO - 6

362+99.998 = ANGEL PT.
1363+00.000 1397+16.116
N 643397.228 N 646711.172
E 2179439.913 E 2178610.684

GRID NORTH
GEODETIC AZ. = GRID AZ. + CONVERGENCE
SCALE 1:1200



LEGEND

- SET 0.75" x 30" REBAR WITH AN 1.5" DIA. ALUMINUM CAP, MARKED "CALTRANS" AND AS NOTED.
- ▼ PROJECT CONTROL MONUMENT, "CALTRANS" ALUMINUM CAP ON 0.75" x 30" REBAR, MARKED AS SHOWN.
- ⊙ FOUND HORIZONTAL OR VERTICAL CONTROL MONUMENT WITH PUBLISHED VALUES.
- FOUND 6" x 6" SQ. TYPE "C" CONCRETE HWY. RIGHT-OF WAY MONUMENT.
- ◆ FOUND PUBLIC LAND NET CORNER, AS NOTED.
- ① FOUND, CALIFORNIA DIVISION OF HIGHWAYS BATHEY CAP AND T-BAR, MARKED AS SHOWN.
- FOUND, CALIFORNIA DIVISION OF HIGHWAYS BRASS CAP IN CONCRETE, MARKED AS SHOWN.
- ⊙ FOUND, CALIFORNIA DEPT. OF TRANSPORTATION BRASS CAP IN CONCRETE, MARKED AS SHOWN.
- ▲ FOUND MONUMENT, MARKED AS SHOWN.
- CALCULATED POINT, NOTHING FOUND OR SET.

804.650

S 00°45'27" E

S 89°59'56" E

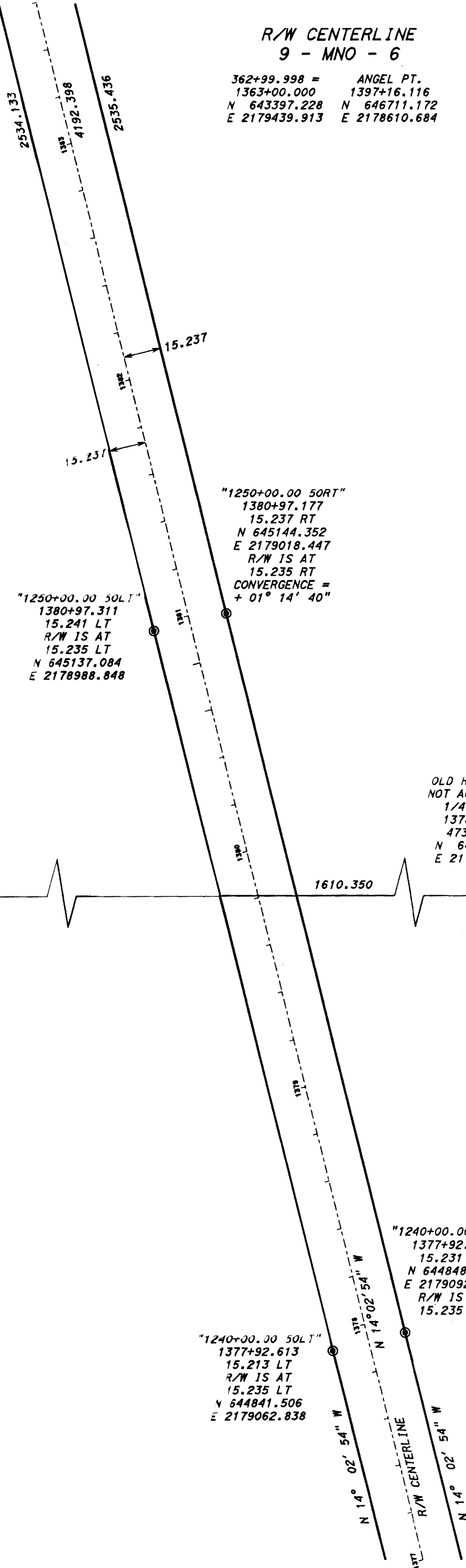
1 / 4 CORNER
SECTIONS 7 & 8
T. 2 S., R. 32 E., M.D.M.
U.S.G.L.O. BRASS CAP
N 645027.765
E 2177909.319

T. 2 S., R. 32 E.,

M.D.M.

SECTION

3



OLD HUB & TACK
NOT ACCEPTED AS
1/4 CORNER.
1378+62.379
473.160 RT
N 645027.733
E 2179519.669