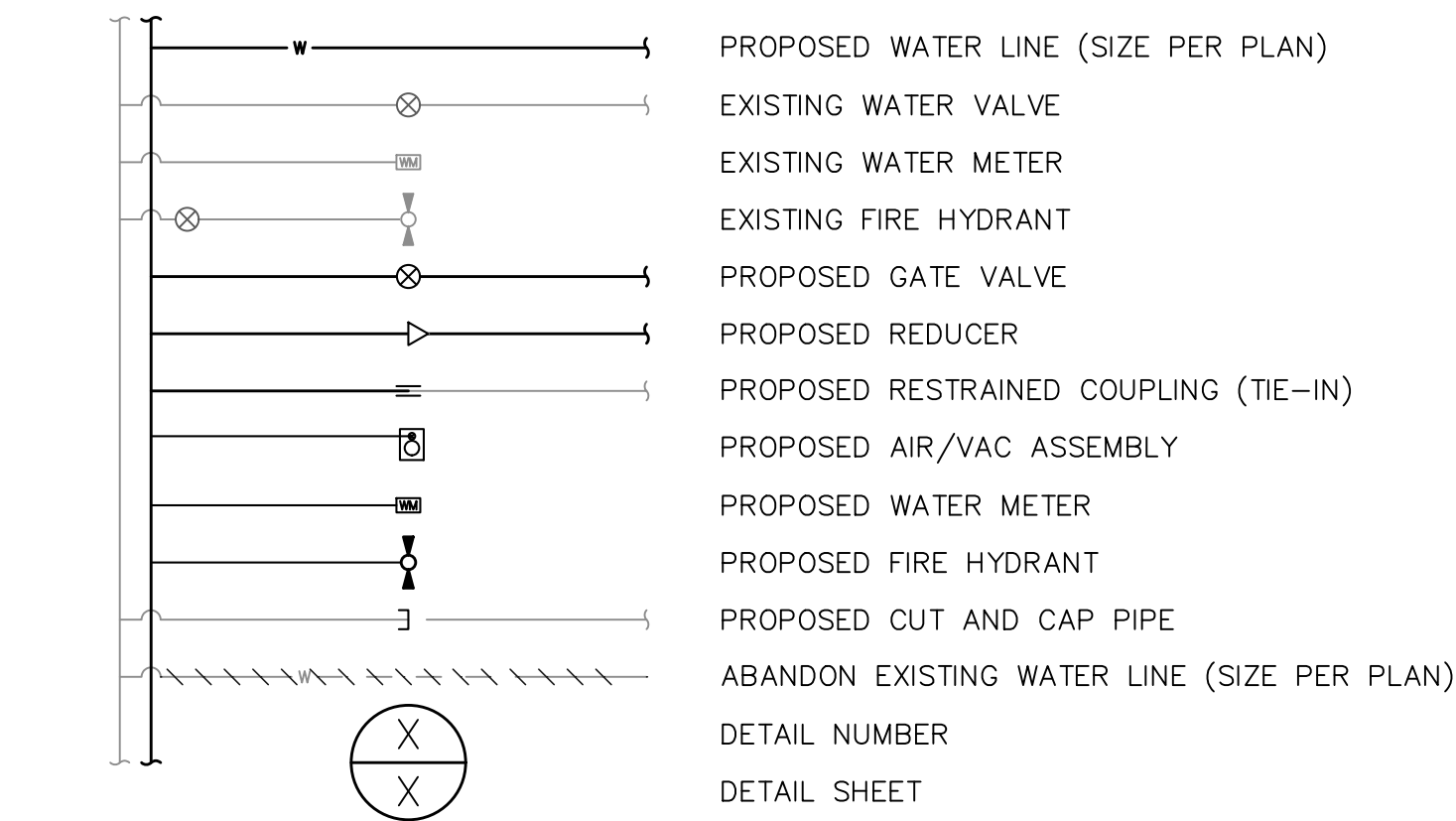


GENERAL NOTES: (WATER)

- THE INSPECTOR SHALL BE CALLED FOR INSPECTION TWO WORKING DAYS PRIOR TO START OF ANY WORK. (714) 738-6871.
- ALL MAIN LINE VALVES SHALL BE MAINTAINED SO AS TO BE ACCESSIBLE DURING CONSTRUCTION AND SHALL BE RAISED TO GRADE WITHIN 48 HOURS OF FINAL AC REPAIR PER CITY OF FULLERTON STANDARD 650. ALL VALVE STEM TOPS HAVING OVER 4 FEET COVER WILL REQUIRE AN EXTENSION PER CITY OF FULLERTON STANDARD DRAWING 651.
- THE CONTRACTOR SHALL NOT OPERATE ANY EXISTING WATER FACILITIES. WATER FACILITIES WILL BE OPERATED BY THE CITY OF FULLERTON EMPLOYEES.
- ALL FIRE HYDRANTS TEMPORARILY OUT OF SERVICE SHALL BE COVERED WITH A SACK INDICATING THAT THE HYDRANTS ARE NOT IN SERVICE.
- THE CONTRACTOR SHALL NOTIFY ALL AFFECTED BUSINESSES AND RESIDENTS IN THE PROJECT AREA, IN WRITING, OF THE PROPOSED SCHEDULING FOR ANY PORTIONS OF THE CONSTRUCTION OF WATER IMPROVEMENTS A MINIMUM OF TWO (2) WORKING DAYS PRIOR TO THE START OF WORK.
- THE CITY OF FULLERTON WATER MAINTENANCE SECTION CANNOT GUARANTEE A COMPLETE SHUTDOWN OF EXISTING MAINS. THE CONTRACTOR SHALL BE RESPONSIBLE FOR DEWATERING AND ISOLATION OF CONSTRUCTION FOR TESTING OR ANY OTHER PURPOSE. CONTRACTOR IS RESPONSIBLE FOR RELEASING AIR OUT OF THE WATER LINE BY METHOD APPROVED BY CITY ENGINEER. MINIMUM TWO (2) WORKING DAY REQUEST FOR WATER SYSTEM SHUTDOWNS. NO SHUTDOWN WILL BE SCHEDULED ON CLOSURE FRIDAYS.
- MAINTAINING WATER SERVICE SHALL BE THE RESPONSIBILITY OF THE CONTRACTOR. METHOD OF PROVIDING TEMPORARY SERVICE MUST BE APPROVED BY THE CITY ENGINEER. MATERIALS USED FOR WATER DISTRIBUTION SHALL BE NSF 61 APPROVED, LEAD-FREE MATERIAL AND IN COMPLIANCE WITH CALIFORNIA STATE WATER RESOURCES CONTROL BOARD-DIVISION OF DRINKING WATER (DDW) REGULATIONS.
- ANY SPRINKLER SYSTEM AND APPURTENANCES ENCOUNTERED WITHIN THE WORK AREA SHALL BE RECONSTRUCTED TO THE SATISFACTION OF THE CITY.
- ALL FACILITIES NOT CALLED OUT TO BE REMOVED SHALL BE PROTECTED IN PLACE.
- PIPELINE CROSSINGS SHALL BE IN ACCORDANCE WITH THE CALIFORNIA WATERWORKS STANDARDS (CALIFORNIA CODE OF REGULATIONS (CCR), TITLE 22, DIVISION 4, CHAPTER 16, SECTION 64572) CRITERIA. WHEN CROSSING A SEWER OR STORM DRAIN PIPELINE, THE NEW WATER MAIN SHALL BE CONSTRUCTED NO LESS THAN 45" TO AND AT LEAST ONE FOOT ABOVE THAT PIPELINE. NO CONNECTION JOINTS SHALL BE MADE IN THE WATER MAIN WITHIN EIGHT HORIZONTAL FEET OF THE SEWER OR STORM DRAIN PIPELINE CROSSING.

LEGEND: (WATER)



ABBREVIATIONS LEGEND: (WATER)

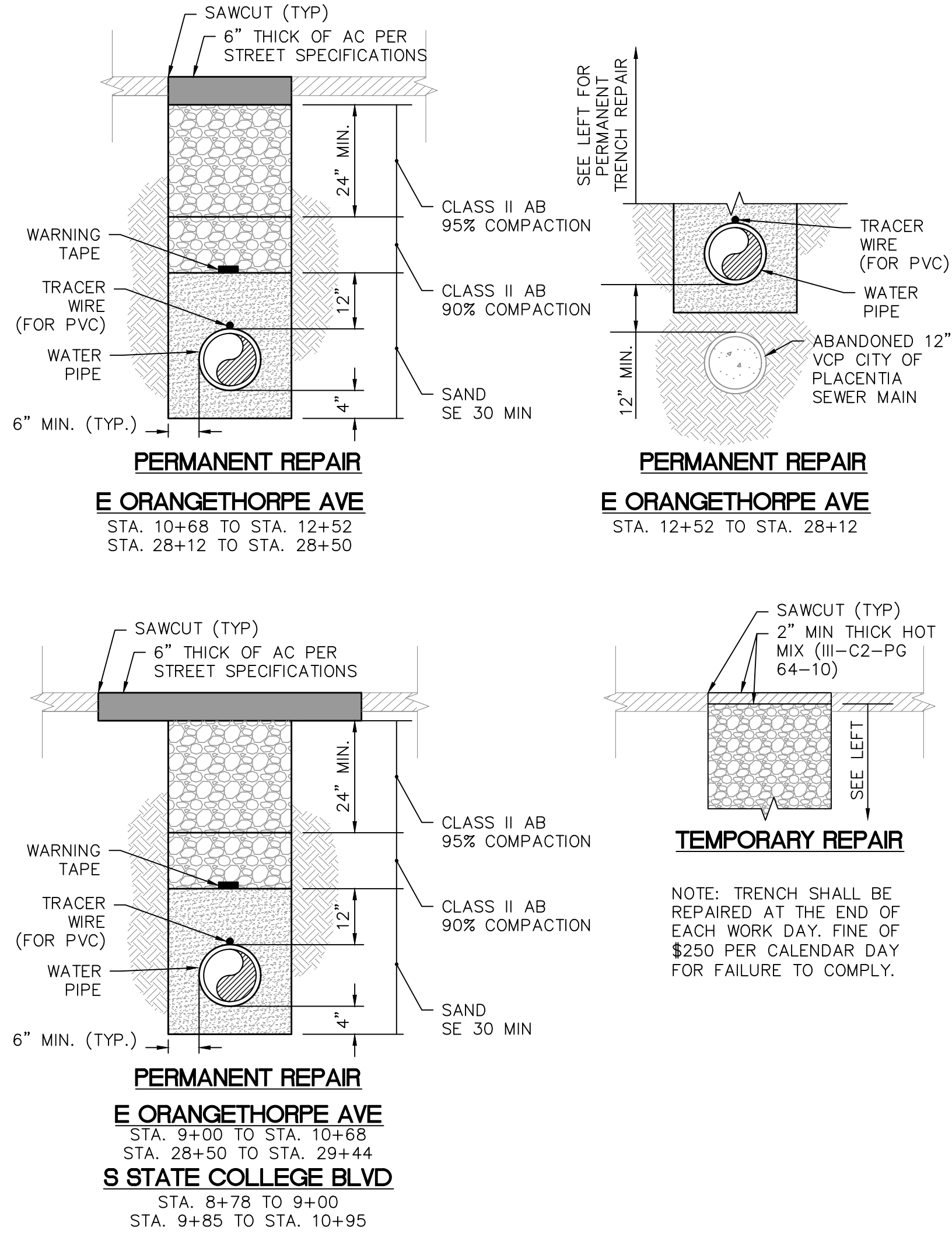
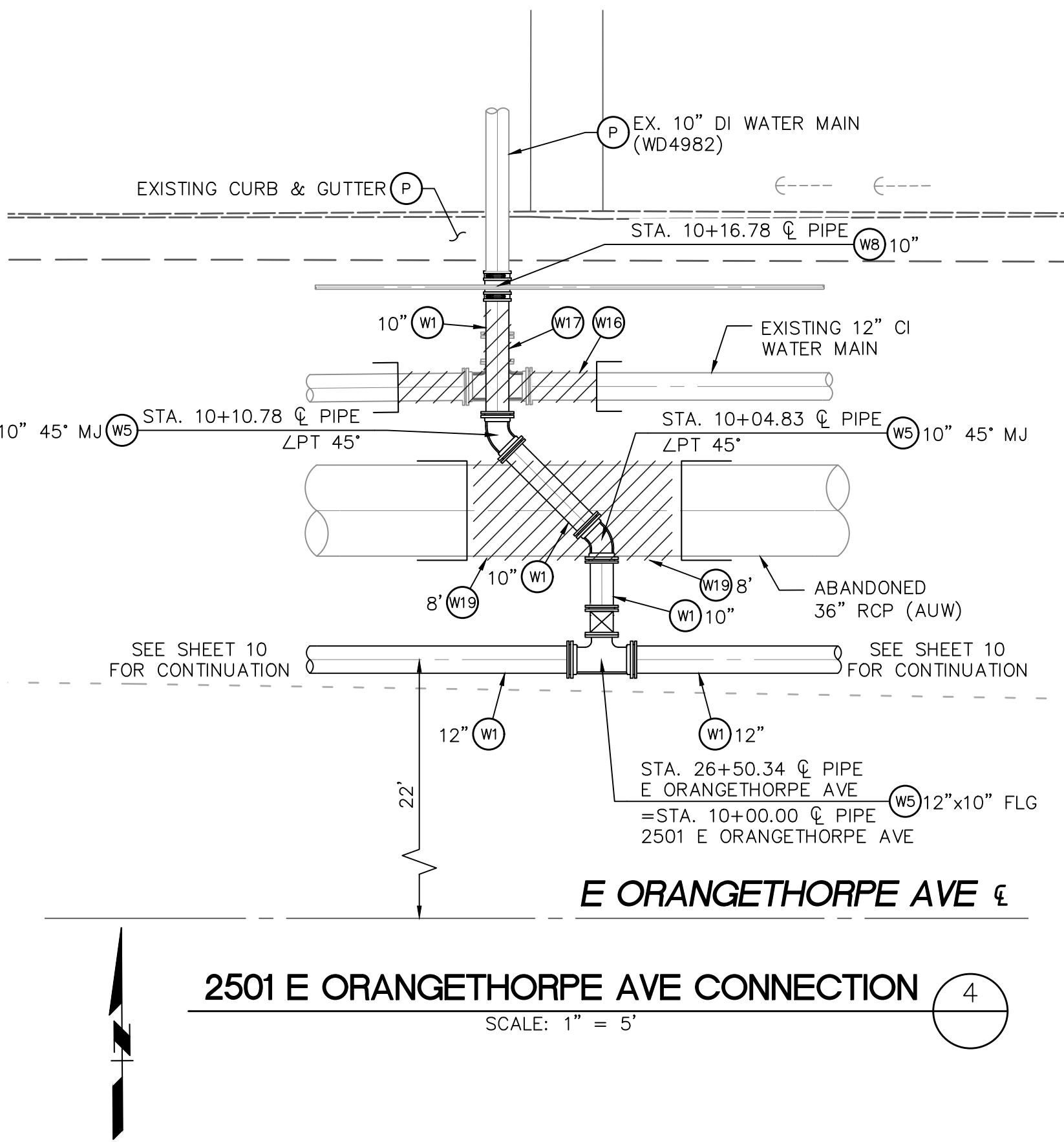
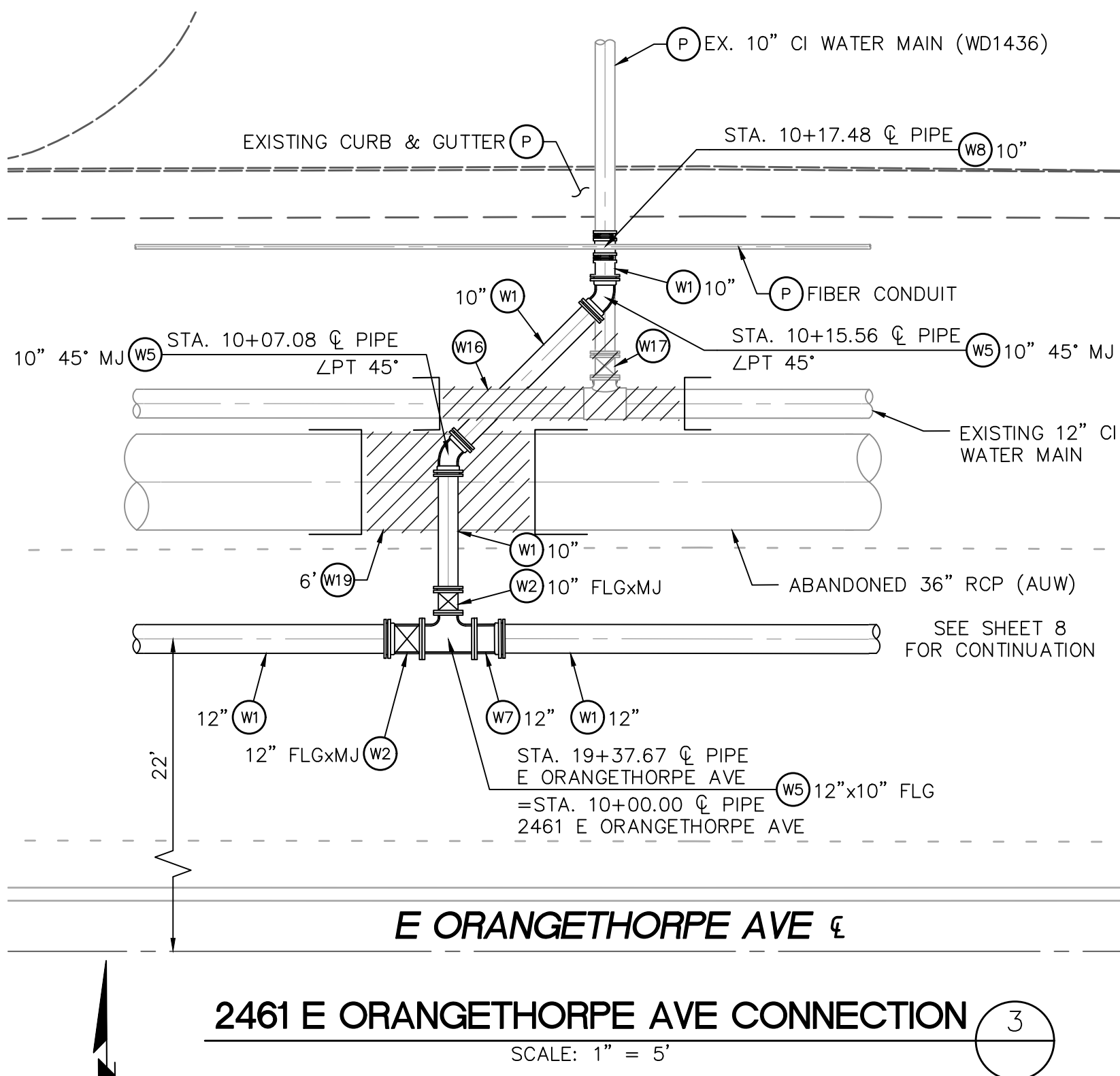
∠PT	ANGLE POINT	N.T.S.	NOT TO SCALE
ABAND.	ABANDONED	OH	OVERHEAD
BM	BENCHMARK	PROP	PROPOSED
BOP	BOTTOM OF PIPE	PVC	POLYVINYL CHLORIDE
CL	CENTERLINE	P/L	PROPERTY LINE
CI	CAST IRON	RCP	REINFORCED CONCRETE PIPE
COA	CITY OF ANAHEIM	RD	ROAD
COP	CITY OF PLACENTIA	R/W	RIGHT OF WAY
COF	CITY OF FULLERTON	S	SOUTH
DI	DUCTILE IRON	SCE	SOCAL EDISON
E	EAST	SCG	SOCAL GAS
ELEC	ELECTRIC	SD	STORM DRAIN
ELEV	ELEVATION	SW	SOUTHWEST
EXIST (EX)	EXISTING	STA	STATION
FH	FIRE HYDRANT	STLT	STREET LIGHT
FLG	FLANGE	TYP	TYPICAL
INV	INVERT	VCP	VITRIFIED CLAY PIPE
LF	LINEAR FOOT	W	WEST
MB	MAILBOX	WD	WATER DRAWING
MH	MANHOLE	WMR	WATER MAIN REPLACEMENT
MIN	MINIMUM	WT	WATER TRACT
MJ	MECHANICAL JOINT		
N	NORTH		
NO.	NUMBER		

LEGEND: (WATER)

EXTENT OF T-CUT PER
DETAIL 1 ON SHEET 5

NOTICE TO CONTRACTOR:

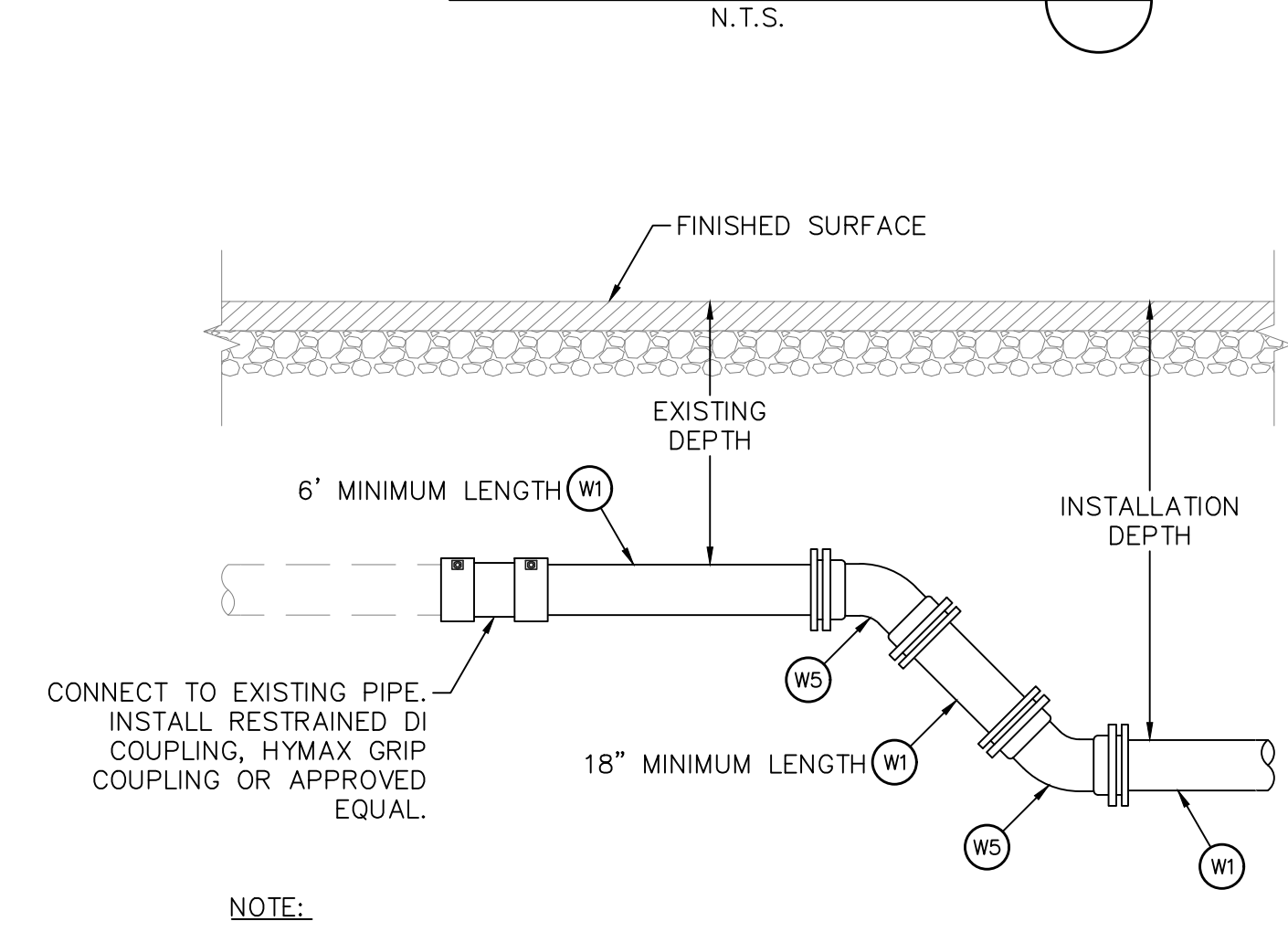
EXISTING UTILITIES SHOWN ARE BASED ON AVAILABLE RECORDS OF PARENT UTILITY COMPANIES AND MAY NOT ACCURATELY REPRESENT THEIR ACTUAL LOCATIONS. PRIOR TO BEGINNING ANY CONSTRUCTION, THE CONTRACTOR SHALL VERIFY THE ACTUAL LOCATIONS (VERTICAL AND HORIZONTAL) OF ALL UTILITIES, IN THE FIELD OR COORDINATE SUCH INDEPENDENT VERIFICATION WITH THE PARENT UTILITY COMPANIES AND PROVIDE THE CITY WITH THE POTHOLE INFORMATION. THE CONTRACTOR SHALL PROTECT IN PLACE OR COORDINATE WITH PARENT COMPANY FOR THE RELOCATION OF CONFLICTING UTILITIES ENCOUNTERED DURING CONSTRUCTION.



NOTE:

- SEE CITY OF FULLERTON STANDARD 312 AND 313 FOR ADDITIONAL INFORMATION.
- ALL CROSS GUTTERS ARE TO BE PROTECTED IN PLACE, WHERE THE BASE CANNOT BE PROPERLY COMPACTED, INSTALL 1 SACK SLURRY UNDER CROSS GUTTER. DAMAGED CROSS GUTTER MUST BE REPLACED JOINT TO JOINT.

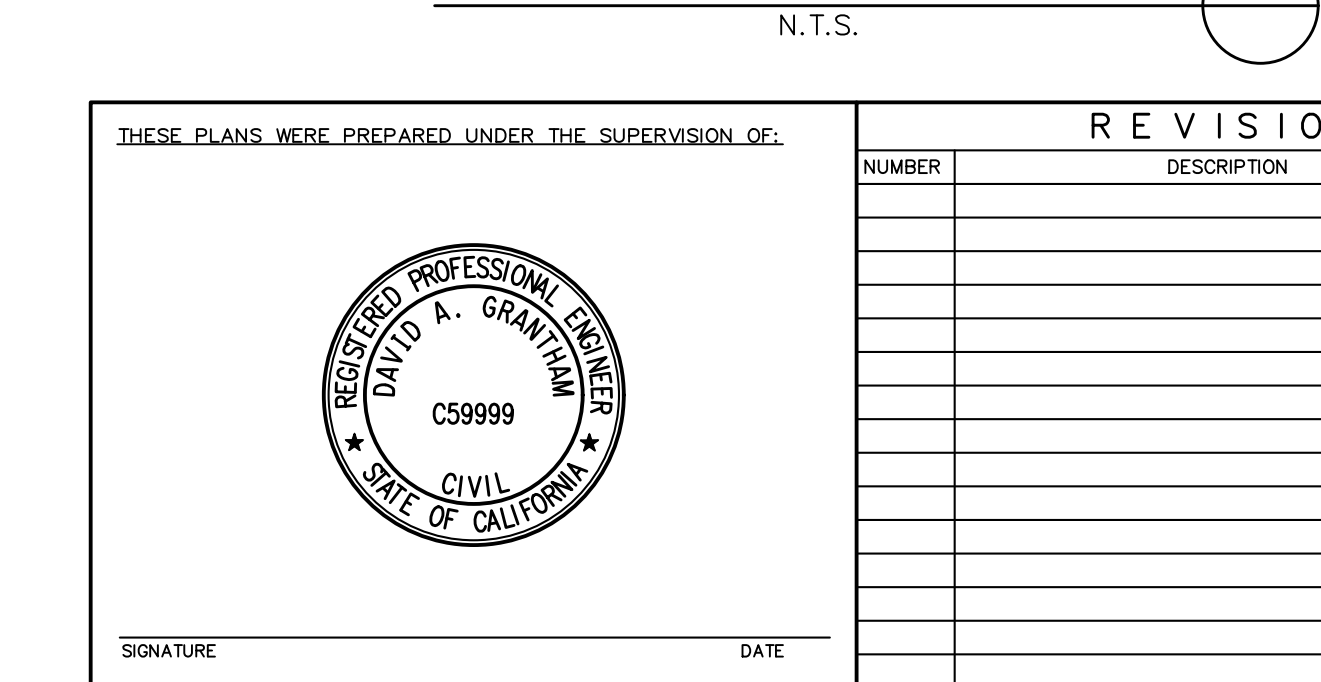
WATER TRENCH DETAIL



NOTE:

- ELBOWS MAY BE 11¼", 22½", 45", OR 90" PER ENGINEER'S APPROVAL.
- SIZE PER PLAN.
- PIPE MATERIAL PER PLAN.

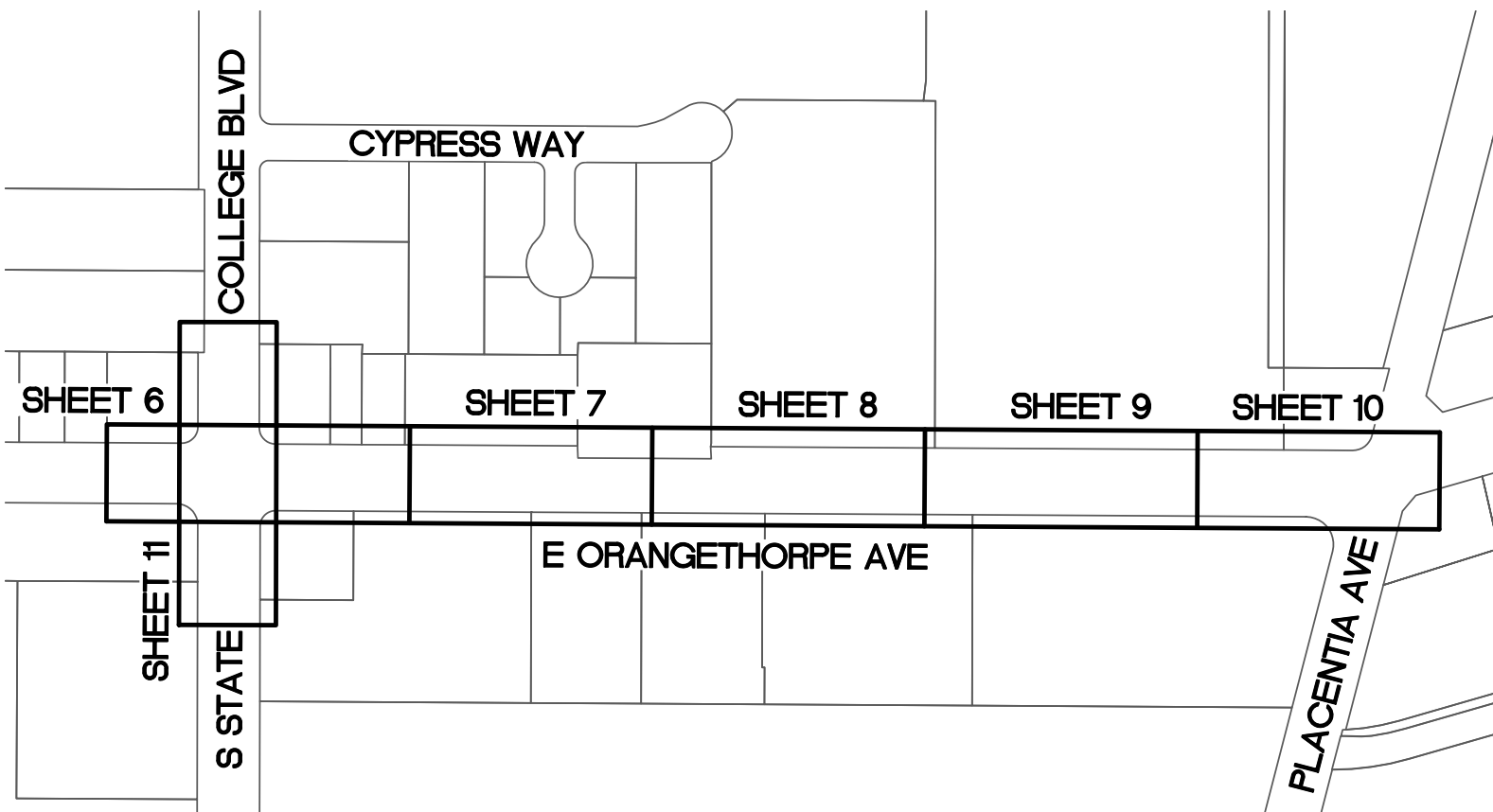
EXISTING PIPE CONNECTION



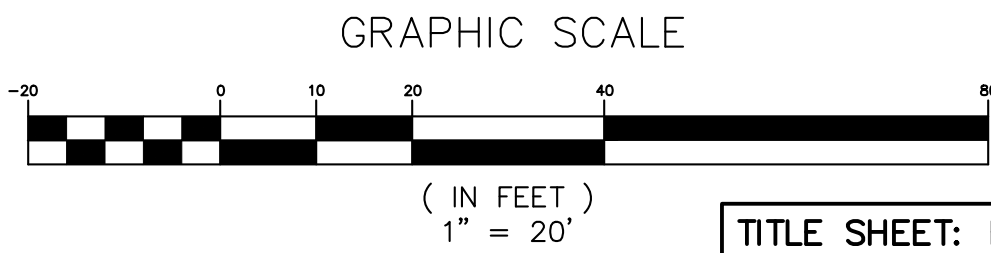
CONSTRUCTION NOTES: (WATER)

- PROTECT IN PLACE ITEM PER PLAN.
 - INSTALL POLYVINYL CHLORIDE PIPE (AWWA C900), DR14 (PRESSURE CLASS 305), WITH TRACER WIRE AND WARNING TAPE (PER PLAN).
- NOTE: TRENCHING, BEDDING AND BACKFILL PER STANDARD DRAWING 312 AND DETAIL 1 ON SHEET 5.
- THE FIRST TWO PIPE JOINTS AT EACH SIDE OF TIE-INS, VALVES, BENDS, AND CONFLUENCES SHALL BE RESTRAINED WITH INTERNAL RESTRAINT GASKETS. ALL MECHANICAL JOINTS, COUPLINGS, AND ADAPTERS ARE TO BE FULLY RESTRAINED AS APPROVED BY ENGINEER.


- ALL WATER LINES SHALL BE INSTALLED TO A MINIMUM DEPTH OF 42" WITH MAXIMUM DEPTH OF 48" BELOW FINISHED STREET SURFACE. THE CITY ENGINEER RESERVES THE RIGHT TO ALTER THE ABOVE CONDITION AS REQUIRED DURING CONSTRUCTION.
- INSTALL RESILIENT-SEATED GATE VALVE (AWWA C509) (PER PLAN) AND VALVE BOX PER STANDARD DRAWING 650 AND 651.
 - INSTALL DI CROSS (PER PLAN).
 - INSTALL DI TEE (PER PLAN).
 - INSTALL DI ELBOW (PER PLAN).
 - INSTALL DI REDUCER (PER PLAN).
 - INSTALL DI ADAPTER (PER PLAN).
 - INSTALL DI RESTRAINED COUPLING (PER PLAN). CONNECT TO EXISTING WATER MAIN PER DETAIL 2 ON SHEET 5.
 - INSTALL RESTRAINED MJ CAP (PER PLAN).
 - INSTALL 1" WATER SERVICE (USE EXISTING METER) PER STANDARD DRAWING 601.
 - INSTALL 2" WATER SERVICE (USE EXISTING METER) PER STANDARD DRAWING 602.
 - CUT AND CRIMP OVER EXISTING SERVICE 18" BELOW GROUND, REMOVE BOX, BACKFILL, COMPACT SOIL TO 95% COMPACTION, AND REPLACE SURFACE IN KIND.
- NOTE: NEW METER BOX LOCATIONS TO BE 7' CLEAR OF DRIVEWAYS AND SIDEWALK ACCESS RAMPS AS POSSIBLE. TRANSITION FROM 11" OUT OF THE BACK OF BOX WITH 12" BRASS NIPPLE, FEMALE BRASS COUPLING, AND ADAPTER TO RECONNECT CUSTOMER SERVICE WITH LIKE MATERIAL AS NECESSARY. EXISTING SERVICE ELEVATION VARIES.
- INSTALL 1" AIR/VAC ASSEMBLY PER STANDARD DRAWING 627.
 - INSTALL FIRE HYDRANT ASSEMBLY (STEAMER TYPE) WITH POSITIVE BREAK-OFF CHECK VALVE PER STANDARD DRAWING 610.
 - CUT AND CAP EXISTING WATER PIPE PER STANDARD DRAWING 648. REMOVE INTERFERING PORTIONS OF ANY ABANDONED FACILITY FOR TIE-INS OR OTHER CONNECTIONS.
 - ABANDON EXISTING WATER PIPE.
 - ABANDON EXISTING WATER VALVE. REMOVE VALVE BOX AND RISER. BACKFILL AND PAVE PER WATER UTILITY SPECIFICATIONS. SALVAGE VALVE BOX LID AND DELIVER TO CITY MAINTENANCE YARD.
 - REMOVE HYDRANT, BURY, AND GUARD POSTS. CAP ABANDONED PIPE. SALVAGE HYDRANT AND DELIVER TO CITY MAINTENANCE YARD.
 - REMOVE INTERFERING PORTIONS OF REINFORCED CONCRETE PIPE (SIZE PER PLAN). INSTALL CONCRETE BULKHEAD.
 - CONTRACTOR TO POTHOLE LOCATION (PER PLAN) PRIOR TO THE START OF CONSTRUCTION.



WATER SHEET KEY MAP



TITLE SHEET: FILE 7082

THESE PLANS WERE PREPARED UNDER THE SUPERVISION OF:		REVISIONS		CITY OF FULLERTON		
	NUMBER	DESCRIPTION	DATE	DRAWN	INITIALS	DATE
				DESIGNED	MJ	5/24
				REVIEWED	MJ	5/24
				REVIEWED	DG	5/24
				STREET		
				SEWER		
				DRAINAGE		
				WATER		
				TRAFFIC		
				UTILITY/ELEC		
				LANDSCAPE		
				FACILITIES		
			GENERAL ENG			
			DESIGN ENG			
			INSPECTION			
			PARKS & REC			
			AS-BUILT			
SIGNATURE		DATE		CITY ENGINEER/ASSISTANT PUBLIC WORKS DIRECTOR		
				DATE		
				PUBLIC WORKS DIRECTOR		
				DATE		
				PUBLIC WORKS DIRECTOR		
				DATE		
				PUBLIC WORKS DIRECTOR		
				DATE		
				PUBLIC WORKS DIRECTOR		
				DATE		
				PUBLIC WORKS DIRECTOR		
				DATE		
				PUBLIC WORKS DIRECTOR		
				DATE		
				PUBLIC WORKS DIRECTOR		
				DATE		
				PUBLIC WORKS DIRECTOR		
				DATE		
				PUBLIC WORKS DIRECTOR		
				DATE		
				PUBLIC WORKS DIRECTOR		
				DATE		
				PUBLIC WORKS DIRECTOR		
				DATE		
				PUBLIC WORKS DIRECTOR		
				DATE		
				PUBLIC WORKS DIRECTOR		
				DATE		
				PUBLIC WORKS DIRECTOR		
				DATE		
				PUBLIC WORKS DIRECTOR		
				DATE		
				PUBLIC WORKS DIRECTOR		
				DATE		
				PUBLIC WORKS DIRECTOR		
				DATE		
				PUBLIC WORKS DIRECTOR		
				DATE		
				PUBLIC WORKS DIRECTOR		
				DATE		
				PUBLIC WORKS DIRECTOR		
				DATE		
				PUBLIC WORKS DIRECTOR		
				DATE		
				PUBLIC WORKS DIRECTOR		
				DATE		
				PUBLIC WORKS DIRECTOR		
				DATE		
				PUBLIC WORKS DIRECTOR		
				DATE		
				PUBLIC WORKS DIRECTOR		
				DATE		
				PUBLIC WORKS DIRECTOR		
				DATE		
				PUBLIC WORKS DIRECTOR		
				DATE		
				PUBLIC WORKS DIRECTOR		
				DATE		
				PUBLIC WORKS DIRECTOR		
				DATE		
				PUBLIC WORKS DIRECTOR		
				DATE		
				PUBLIC WORKS DIRECTOR		
				DATE		
				PUBLIC WORKS DIRECTOR		
				DATE		
				PUBLIC WORKS DIRECTOR		
				DATE		
				PUBLIC WORKS DIRECTOR		
				DATE		
				PUBLIC WORKS DIRECTOR		
				DATE		
				PUBLIC WORKS DIRECTOR		
				DATE		
				PUBLIC WORKS DIRECTOR		
				DATE		
				PUBLIC WORKS DIRECTOR		
				DATE		
				PUBLIC WORKS DIRECTOR		
				DATE		
				PUBLIC WORKS DIRECTOR		
				DATE		
				PUBLIC WORKS DIRECTOR		
				DATE		
				PUBLIC WORKS DIRECTOR		
				DATE		
				PUBLIC WORKS DIRECTOR		
				DATE		
				PUBLIC WORKS DIRECTOR		
				DATE		
				PUBLIC WORKS DIRECTOR		
				DATE		
				PUBLIC WORKS DIRECTOR		
				DATE		
				PUBLIC WORKS DIRECTOR		
				DATE		
				PUBLIC WORKS DIRECTOR		
				DATE		
				PUBLIC WORKS DIRECTOR		
				DATE		
				PUBLIC WORKS DIRECTOR		
				DATE		
				PUBLIC WORKS DIRECTOR		
				DATE		
				PUBLIC WORKS DIRECTOR		
				DATE		
				PUBLIC WORKS DIRECTOR		
				DATE		
				PUBLIC WORKS DIRECTOR		
				DATE		
				PUBLIC WORKS DIRECTOR		
				DATE		
				PUBLIC WORKS DIRECTOR		
				DATE		
				PUBLIC WORKS DIRECTOR		
				DATE		
				PUBLIC WORKS DIRECTOR		
				DATE		
				PUBLIC WORKS DIRECTOR		
				DATE		
				PUBLIC WORKS DIRECTOR		
				DATE		
				PUBLIC WORKS DIRECTOR		
				DATE		
				PUBLIC WORKS DIRECTOR		
				DATE		
				PUBLIC WORKS DIRECTOR		
				DATE		
				PUBLIC WORKS DIRECTOR		
				DATE		
				PUBLIC WORKS DIRECTOR		
				DATE		
				PUBLIC WORKS DIRECTOR		
				DATE		
				PUBLIC WORKS DIRECTOR		
				DATE		
				PUBLIC WORKS DIRECTOR		
				DATE		
				PUBLIC WORKS DIRECTOR		
				DATE		
				PUBLIC WORKS DIRECTOR		
				DATE		
				PUBLIC WORKS DIRECTOR		
				DATE		
				PUBLIC WORKS DIRECTOR		
				DATE		
				PUBLIC WORKS DIRECTOR		