

Dreamweaver User Documentation

Your Name
24 May 13

Assessment 2

Contents Page

Table of Contents

How to open Dreamweaver	3
Manage Sites.....	3
Selecting the web pages.....	3
Making Edits	3
Saving your work.....	3
Closing the Site	3

How to open Dreamweaver

(turn the following into sentences)

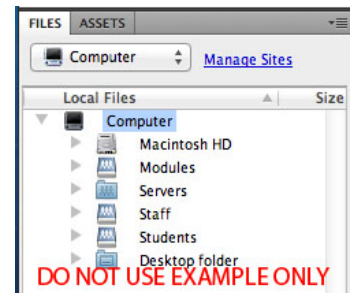
1. Turn on Comp
2. Find DW in finder window (*Take a screen shot*)
3. Click
4. Greeted with Welcome screen (*Take a screen shot*)

Manage Sites

1. Click sites from tool bar above dreamweaver (*Take a screen shot*)
2. Click manage sites (*Take a screen shot*)
3. Click new/new site (*Take a screen shot*)
4. Name site
5. Click done

Selecting the web pages

1. Look to files window(*Take a screen shot*) (see example ->)
2. Click arrow on folder
3. Double click file



Making Edits

(before starting open a new html file for the purpose of this section, add some text to that file)

1. Click design side window (*Take a screen shot*)
2. Make any necessary changes (*change text, then (Take a screen shot)*)

Saving your work

1. From top tool bar, select File > Save (*Take a screen shot*)
2. Specify save location (*Take a screen shot*)
3. Click save

Closing the Site

1. Click file (*Take a screen shot*), ,Close

(go to your contents page, right click table and click update, this will update your contents page, **Delete any text I have put in brackets**)