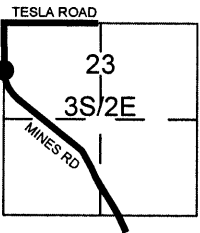


CORNER RECORD

Document Number _____

City of UNINCORPORATED LIVERMORE County of ALAMEDA, California

Brief Legal Description COUNTY RIGHT-OF-WAY MONUMENT CONTROLLING MINES ROAD, APPROX. STA. 13+14



CORNER TYPE

Government Corner ☐ Control ☐
Meander ☐ Property ☐
Rancho ☐ Other ☒
Date of Survey 10/16/2014

COORDINATES (Optional)

N. 2065689.91 ±
E. 6204812.24 ±
Zone 3 NAD27 ☐ NAD83 ☒
NAD83 Epoch _____
Elev. _____
Vet. Datum: NGVD29 ☐ NAVD88 ☐
Meas. Units: Metric ☐ Imperial ☐

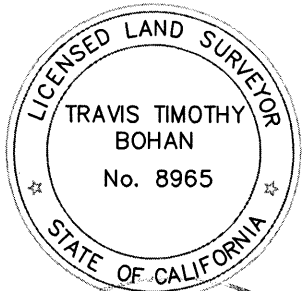
Corner - Left as found ☒ Found and tagged ☐ Established ☐ Reestablished ☐ Rebuilt ☐

Identification and type of corner found: Evidence used to identify or procedure used to establish or reestablish the corner:
County of Alameda provided navigational coordinates for monuments. The monument(s) was located magnetically
then unearthed and observed. The purpose of this corner record is to preserve the location of existing
monuments prior to construction. This is the resulting post-construction corner record depicting the final
locations and descriptions.

A description of the physical condition of the monument as found and as set or reset: See attached sketch

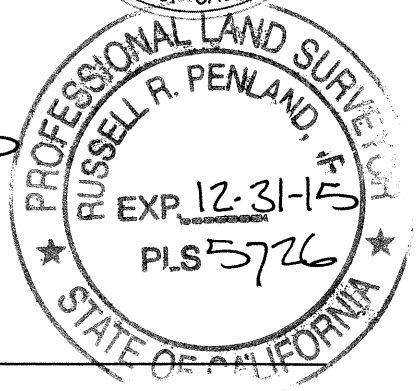
SURVEYOR'S STATEMENT

This Corner Record was prepared by me or under my direction in conformance with
the Land Surveyor's Act on October 16 20 14
Signed Travis Timothy Bohan (P.L.S.) or P.C.E. No. 8965



COUNTY SURVEYOR'S STATEMENT

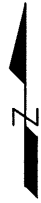
This Corner Record was received 10-20 20 14
and examined and filed 2-6- 20 15
Signed Russell R. Penland P.L.S. or P.C.E. No. 5726
Title COUNTY SURVEYOR



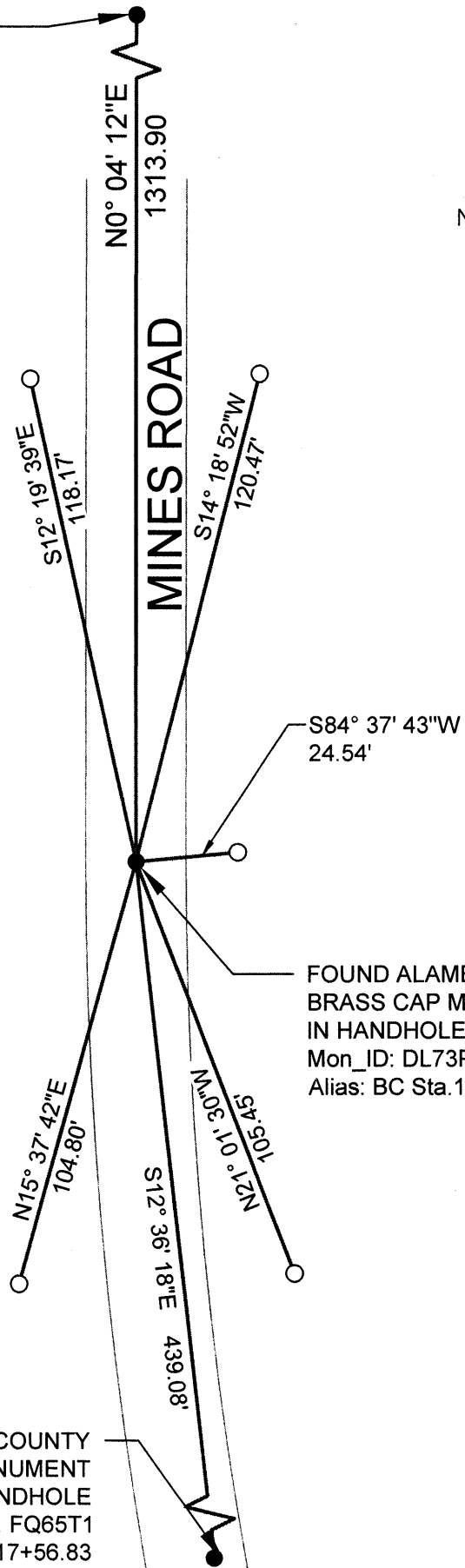
County Surveyor's Comment: _____

SPEC. 2256

FOUND ALAMEDA COUNTY
BRASS CAP MONUMENT
IN HANDHOLE
AT THE INTERSECTION OF
MINES ROAD AND TESLA ROAD
Mon_ID: GD76J2
Alias: Sta 94+73.78
SEE CR6754



NOT TO SCALE



LEGEND

- SET 60D NAIL WITH FEATHER UNLESS OTHERWISE NOTED
- FOUND ALAMEDA COUNTY STANDARD MONUMENT IN HANDHOLE

CR6755

LUK & ASSOCIATES #14129S10

FOUND ALAMEDA COUNTY
BRASS CAP MONUMENT
IN HANDHOLE
Mon_ID: FQ65T1
Alias: Mid Pt Sta. 17+56.83
SEE CR6756