



Electric Bike

D3 Structure illustration & folding instructions

Shenzhen QLHX Technology Co., Ltd.  
4/F, Building 2, No. 13, Pingji Road, Longgang District, Shenzhen, Guangdong, China

CE   
Made in China

# Structure illustration





### Note:

After the car is stationary, it does not run for 10 minutes to enter the sleep mode and automatically shut down.



### Battery charging port

The charging port is located on the left side of the controller box.

## Pedal installation



Pedal



Left



Right

Use a 15mm open spanner to clamp the pedal shaft core and tighten it in the direction of the arrow (left counterclockwise, right clockwise, as shown).

Note: When installing the pedal, be aware of the left and right, align the installation horizontally to prevent the pedal or crank slip.

# Unfolding instructions

1. Fold the riser to the upper end, lock the riser folding handle, adjust the riser safety hook to the tightening state, and adjust the position of the T handle.
2. Open the clip on the seat tube clamp and insert the seat tube into the position within the marking line on the seat tube. Adjust the seat to the comfortable height according to individual needs, and fasten the seat tube clip.

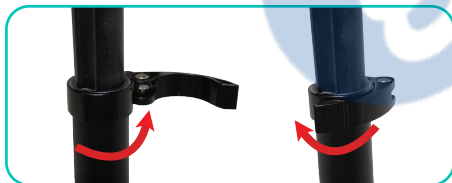


Please confirm the following items before riding: frame lock, standpipe lock and seat tube lock are locked. Brake system is normal. Tires are adequately inflated. All these are important for a safe and comfortable riding.



opened

locked



The insertion depth must be higher than the tick mark



Adjusting the handle



## Folding instructions

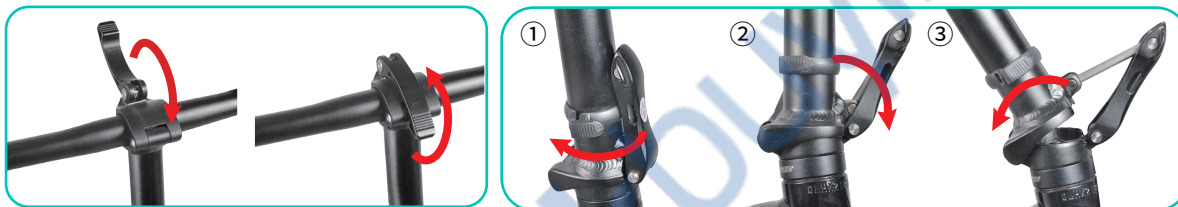
Step 1. Open the quick lock on the head end, to let the handle be perpendicular to the care frame.

Step 2. Open the quick lock on the Stem, lower the riser, as well as locking the quick lock.

Step 3. Open the Seat Tube quick lock, decentralized seats, as well as locking the quick lock.

Note:

Both the Riser and the Seat Tube are marked with a safe scale (MAX or MIN). For safety reasons, please use them in a safe range.



Step 4. Turn the buckle on the Standpipe clockwise and pull down the fold and fold down the front.

Step 5. Open the frame holder of the fuse buckle, pull the fold, and fold the frame.



## Product parameters

| Name                   | Specification                       |
|------------------------|-------------------------------------|
| Electric Bike System   | FIIDO System                        |
| Electric Motorcycle    | Support                             |
| Power Assist System    | 3 Gears Assist                      |
| Max Load weight        | 120kg                               |
| Maximum Speed          | 25km/h                              |
| Maximum Range          | up to 60km                          |
| Battery                | High quality lion battery 36V 7.8Ah |
| Battery adaptation     | DC 42V 2A                           |
| Recharge Time          | 5 hours                             |
| Drive Type             | Rear Drive                          |
| Frame Material         | Aluminum Alloy                      |
| Front Brake            | Mechanical Disc Brakes              |
| Brake Type             | Mechanical Disc Brakes              |
| Chainset               | Prowheel Steel 52 Tooth             |
| Gears                  | 12 Tooth                            |
| Chain                  | KMC S1 RB                           |
| Rear Brake             | Mechanical Disc Brakes              |
| Rear Hub / Rated Power | XiongDa Motor / 250W                |
| Rims                   | Alloy                               |
| Wheel Size             | 14"                                 |
| Tyre Size              | 14 x 2.125 inch                     |
| Tyres                  | Cheng Shin Tire                     |
| Net Weight             | about 17 KG                         |
| Size                   | 123cm x 57cm x 105cm                |
| Pack Size              | 124cm x 24cm x 57cm                 |

\* The above data allow for 5% manufacturing tolerances.

\* After receiving the goods, there may be some differences between individual accessories and display drawings, which are different due to the different batches, and do not affect the use.