

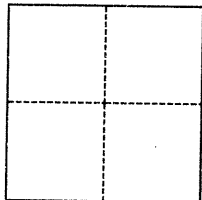
# CORNER RECORD

Agency Index BK 126 PG 1  
Document Number CR-13178

City of EDEN TOWNSHIP County of ALAMEDA, California  
Brief Legal Description Monument at Vasser Ave. and Empire St. per TR 1002, 30 Maps 88

## CORNER TYPE

## COORDINATES (Optional)



- ☐ Government Corner ☒ Control  
☐ Meander ☐ Property  
☐ Rancho ☐ Other

Date of Survey August 5, 2019

N. \_\_\_\_\_ E. \_\_\_\_\_  
Elevation \_\_\_\_\_  
Units ☐ Metric ☐ U.S. Survey Foot  
Horizontal Datum \_\_\_\_\_  
Zone \_\_\_\_\_ Epoch Date \_\_\_\_\_  
Vertical Datum \_\_\_\_\_  
☐ Complies with Public Resources Code §§8801-8819  
☐ Complies with Public Resources Code §§8890-8902

PLS Act Ref.: ☐ 8765(d) ☒ 8771 ☐ 8773 ☐ Other:  
Corner/  
Monument: ☒ Left as found ☐ Established ☐ Rebuilt ☒ Pre-Construction  
☐ Found and tagged ☐ Reestablished ☒ Referenced ☐ Post-Construction

Narrative of corner identified and monument as found, set, reset, replaced, or removed:  
☒ See sheet #2 for description(s):

FOUND COUNTY MONUMENT, BRONZE PIN IN MONUMENT WELL AT THE INTERSECTION OF VASSER AVENUE AND EMPIRE STREET AS SHOWN ON TRACT MAP 1002, BOOK 30 PAGE 88. SET STAINLESS STEEL TAGS AS SHOWN ON PAGE 2.

## SURVEYOR'S STATEMENT

This Corner Record was prepared by me or under my direction in conformance with

the Professional Land Surveyors' Act on August 10, 2019

Signed [Signature] P.L.S. or P.C.E. No. 7905



## COUNTY SURVEYOR'S STATEMENT

This Corner Record was received

AUG 07 2019

and examined and filed

OCT 28 2019

Signed D. Ian Wilson P.L.S. or P.C.E. No. 7010

Title County Surveyor

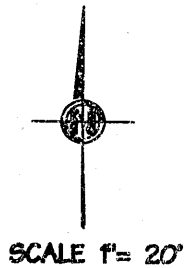
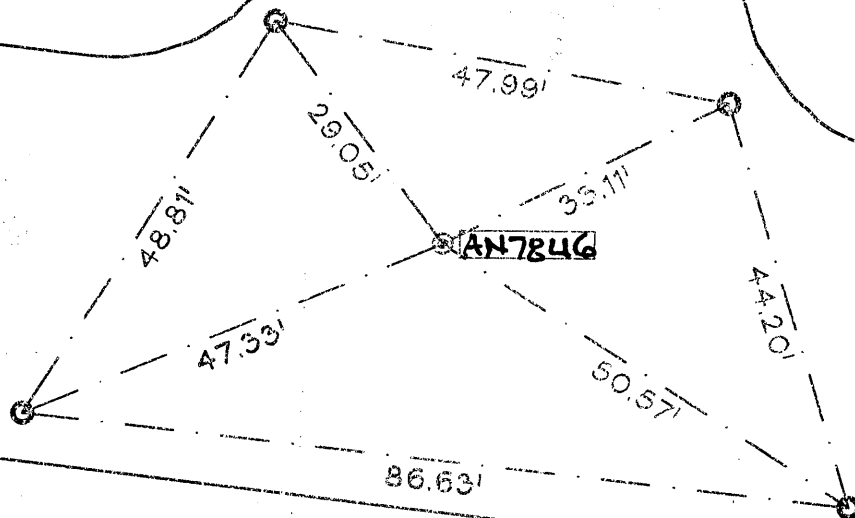
County Surveyor's Comment

SPEC 2380



**REFERENCE:**

TRACT 1002 - BOOK 30 PAGE 88

APN:  
80D-576-12VASSAR  
AVENUEEMPIRE  
STREET**LEGEND:**

FOUND STANDARD ALAMEDA  
COUNTY MONUMENT IN WELL  
SET STAINLESS STEEL  
TAG (L.S. 7905) AND NAIL  
COUNTY MONUMENT No.

