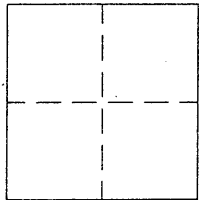


# CORNER RECORD

99-66 8 Cr 066

APN No. \_\_\_\_\_ (Optional) Document Number CR 1131  
 City of \_\_\_\_\_ County of ALAMEDA, California  
 Brief Legal Description STANDARD COUNTY MONUMENT ON LEAVITT COURT.



## CORNER TYPE

Government Corner ☐ Control ☐  
 Meander ☐ Property ☐  
 Rancho ☐ Other ☒  
 Date of Survey JULY 27, 1998

## COORDINATES (Optional)

N. \_\_\_\_\_  
 E. \_\_\_\_\_  
 Zone \_\_\_\_\_ Datum \_\_\_\_\_  
 Elev. \_\_\_\_\_

Corner - Left as found ☒ Found and tagged ☐ Established ☐ Reestablished ☐ Rebuilt ☐

In compliance with Section 8771 of the Professional Land Surveyors' Act, this corner record is being filed to  
 ESTABLISH ☒ / REESTABLISH \_\_\_\_\_ the position of an existing monument PRIOR ☒ / SUBSEQUENT \_\_\_\_\_  
 to street or highway reconstruction. (Use this portion only when applicable.)

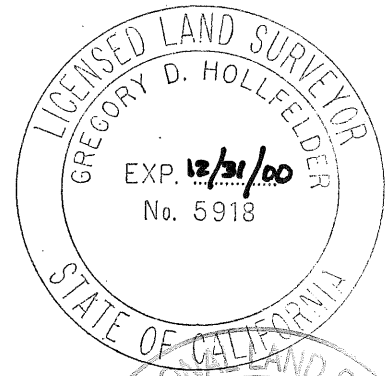
Identification and type of corner found: Evidence used to identify or procedure used to establish or reestablish the corner:  
THE MONUMENT DESCRIBED BELOW WAS REFERENCED BY STRAIGHT LINES THROUGH  
MONUMENT PIN AND DISTANCES SHOWN ON DIAGRAM.

A description of the physical condition of the monument as found and as set or reset: FOUND ALAMEDA COUNTY  
MONUMENT SHOWN ON TRACT MAP 2229, FOUND PIN IN CONCRETE 0.26 BELOW  
SURFACE, FOUND MONUMENT IN GOOD CONDITION.

## SURVEYOR'S STATEMENT

This Corner Record was prepared by me or under my direction in conformance with  
 the Land Surveyors' Act on DECEMBER 11 19 98.

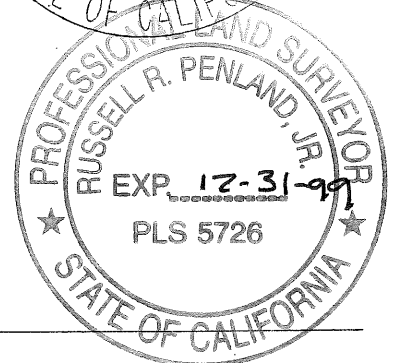
Signed Gregory D. Hollfelder L.S. or R.C.E. Number 5918



## COUNTY SURVEYOR'S STATEMENT

This Corner Record was received 12-15 19 98 and examined  
 and filed 3-12-99

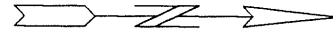
Signed Russell R. Penland, Jr. Title Deputy County Surveyor



County Surveyor's Comment \_\_\_\_\_



UNITS ARE IN METERS  
UNLESS OTHERWISE NOTED.



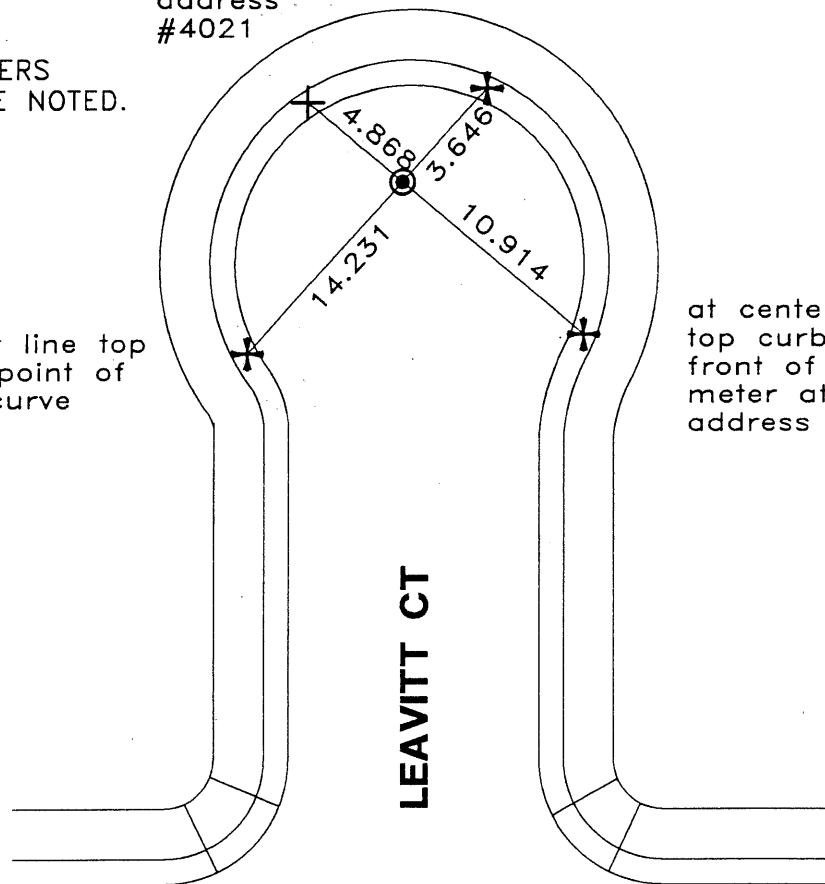
NO SCALE

at center line  
top of curb  
1.6 southerly  
of center line  
driveway at  
address  
#4021

at center line  
top curb 0.8  
northerly of  
driveway at  
address #4021

at center line top  
curb at point of  
reverse curve

at center line  
top curb in  
front of water  
meter at  
address #4034



## LEGEND

- FOUND STANDARD ALAMEDA COUNTY MONUMENT, PIN IN CONCRETE POST, 0.26 DOWN IN MONUMENT WELL.
- + SET CHISELED "+" IN CONCRETE.
- + FOUND CHISELED "+" IN CONCRETE.

## REFERENCE(S)

PER TRACT MAP 2229, BOOK 44, PAGE 16, EDEN TOWNSHIP.

FIELD BOOK LL-4278

athena\survey\cor-rec\leavb.dwg