

RECORD of SURVEY

PORTION OF LOT 5 OF THE FARR RANCH SUBDIVISION
SANTA CLARA COUNTY CALIFORNIA
Scale: 1"=100' April 1963

mastin & kingston
CIVIL ENGINEERING & LAND SURVEYING
40 WOODHAMS RD., SANTA CLARA, CALIF.

SURVEYOR'S CERTIFICATE

This map correctly represents a survey made by me or under my direction in conformance with the requirements of Chapter 15 of Division 3 of the Business and Professions Code at the request of Glenn E. Harrick in April 1963.

Howard G. Kingston
Howard G. Kingston C.S. 2714

COUNTY SURVEYOR'S CERTIFICATE

This map has been examined for conformance with the requirements of Chapter 15 of Division 3 of the Business and Professions Code this 12th day of May, 1963

James T. Pott, County Surveyor

By Deputy *Allen Johnson*

COUNTY RECORDER'S CERTIFICATE

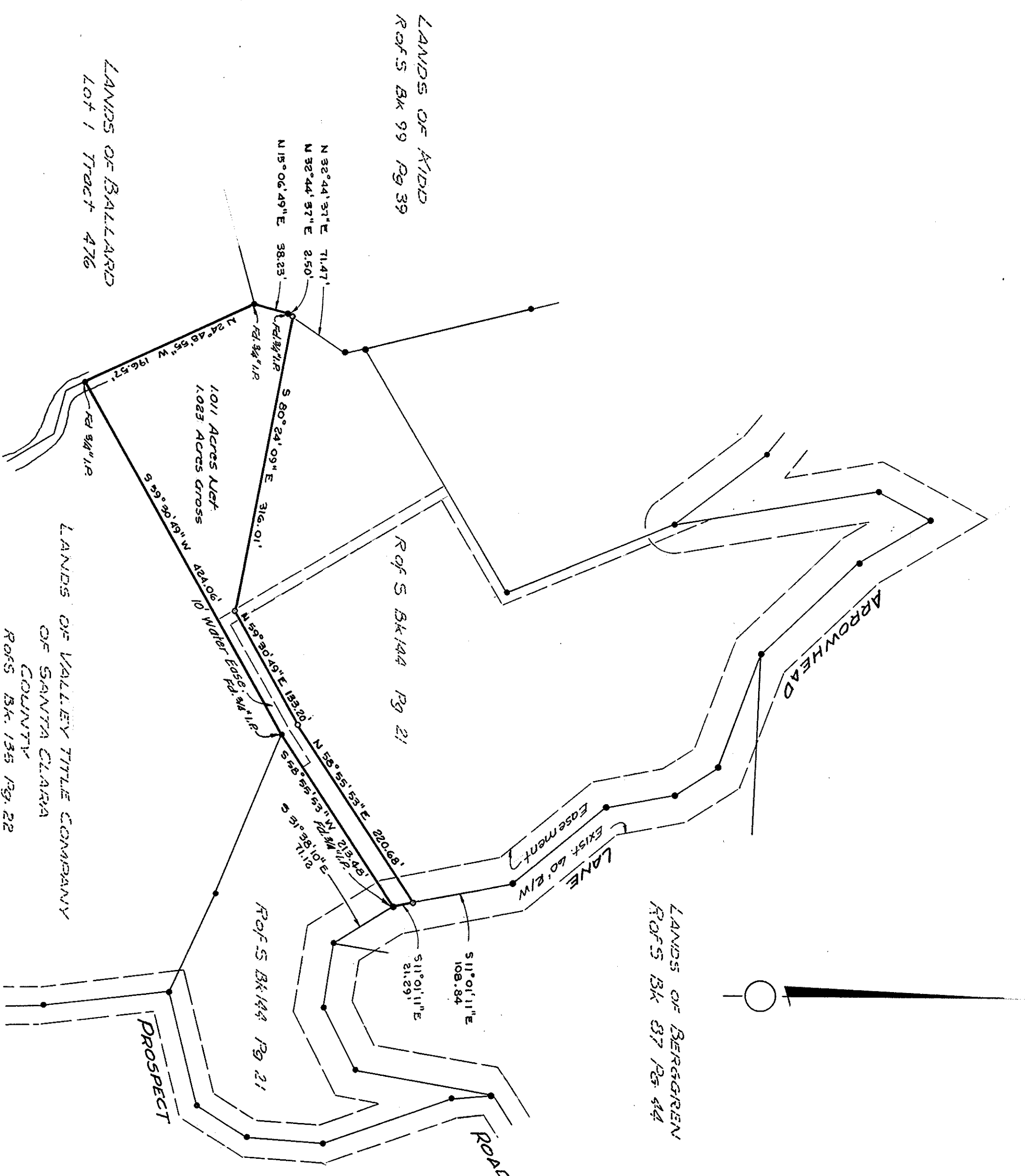
File No. 240 1625 fee \$5.00 (Five) paid.
Filed for record this 13th day of May, 1963 at 9:03 a.m.
in Book 161 of Maps at Page 11 at the request of
Howard G. Kingston.

Paul R. Teilh, County Recorder

By Deputy *David E. Johnson*

BASIS OF BEARING

The bearing 51°01'11"E of the centerline of Arrowhead Lane as shown on a Record of Survey filed for Record in Book 144 of Maps at Page 21, Santa Clara County Records, was taken as the basis of bearings shown upon this map.



LEGEND & NOTE

- Indicates marker found as noted.
- Indicates iron pipe set as of this date
- All distances and dimensions are shown in feet and decimals thereof