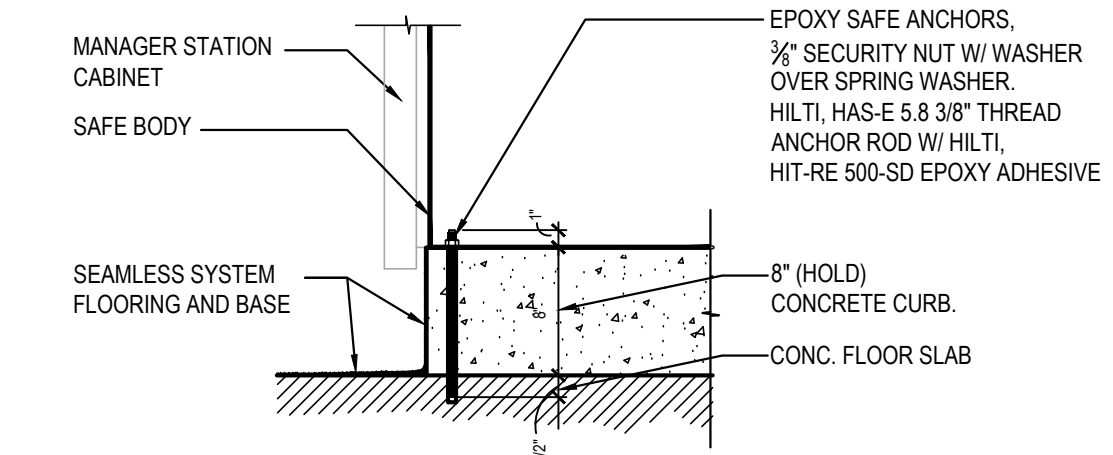
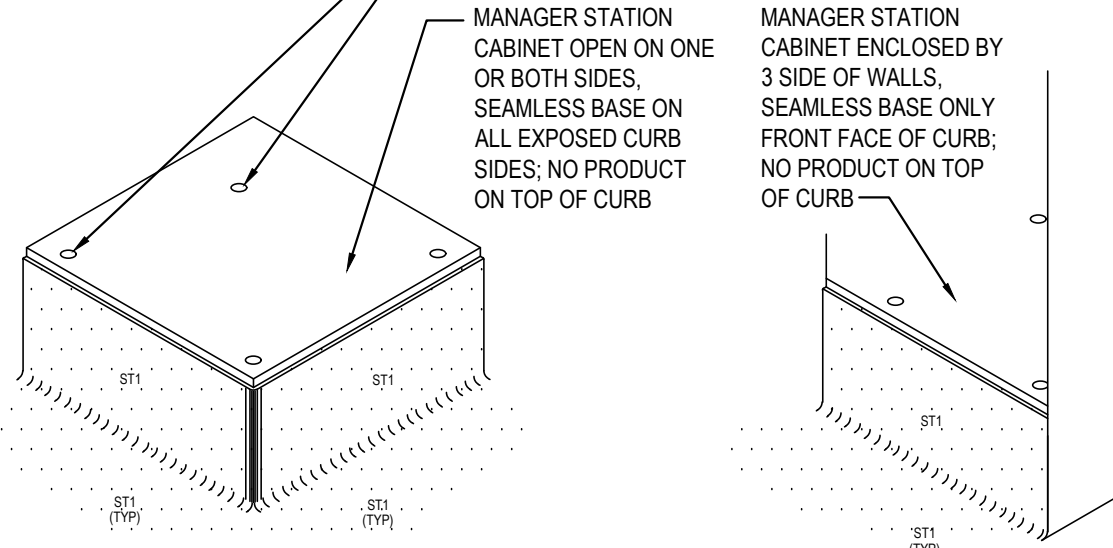


MANAGER CABINET STATION CURB SIZES REFER FLR. PLAN FOR LOCATION

- 1) IF CABINET IS ENCLOSED BY 3 SIDE OF WALLS:
8" H X 24" W X 48-1/2" L (CONCRETE CURB ONLY, NOT INCLUDE TILE BASE)
TILE ONLY ON FRONT FACE (EXPOSED CURB), THIS APPLY TO PROTOTYPE BUILDING LAYOUTS.
- 2) IF CABINET ENCLOSED BY ONLY (1) ONE WALL:
8" H X 24" W X 48" L (CONCRETE CURB ONLY, NOT INCLUDE TILE BASE)
TILE FRONT AND (1) SIDE FACE (EXPOSED CURB)
- 3) IF CABINET OPEN WITH NO WALLS:
8" H X 24" W X 48" L (CONCRETE CURB ONLY, NOT INCLUDE TILE BASE)
TILE ALL 3 SIDES OF THE CURB

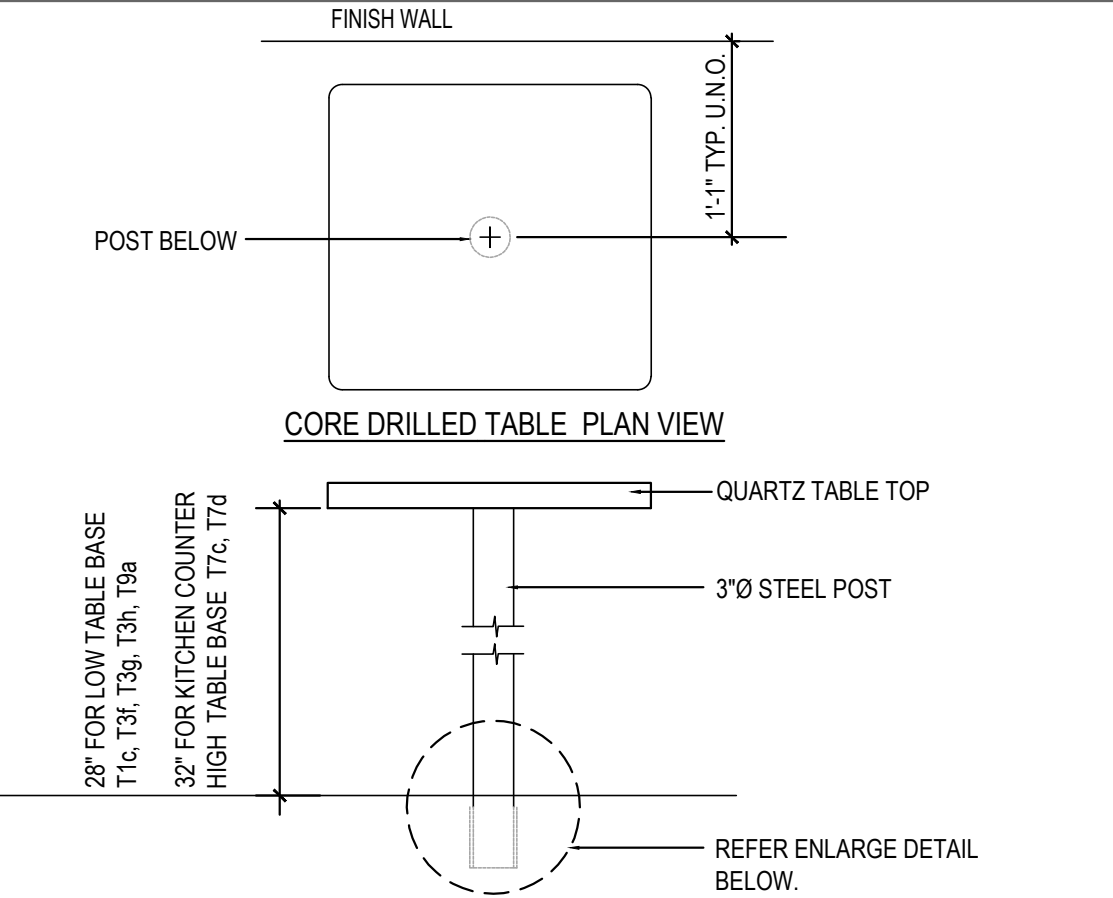
DRILL 1/2" HOLES THRU CURB INTO FLOOR SLAB, REFER SECTION
DETAIL BELOW. HOLE LOCATIONS VARIES DEPEND ON SAFE MODEL.
CHECK PANDA PM FOR SAFE MODEL.



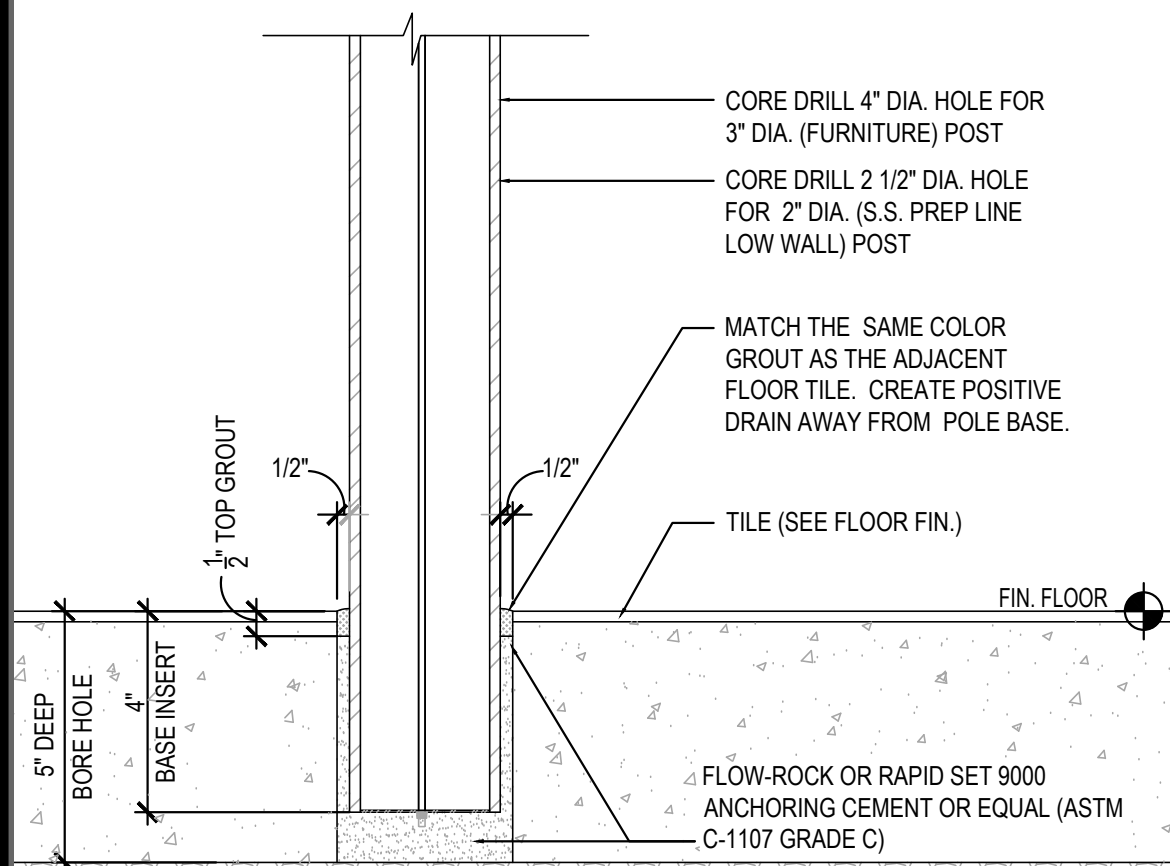
MGR. STATION & SAFE CURB

20

Scale= 1" = 1'-0" A-404



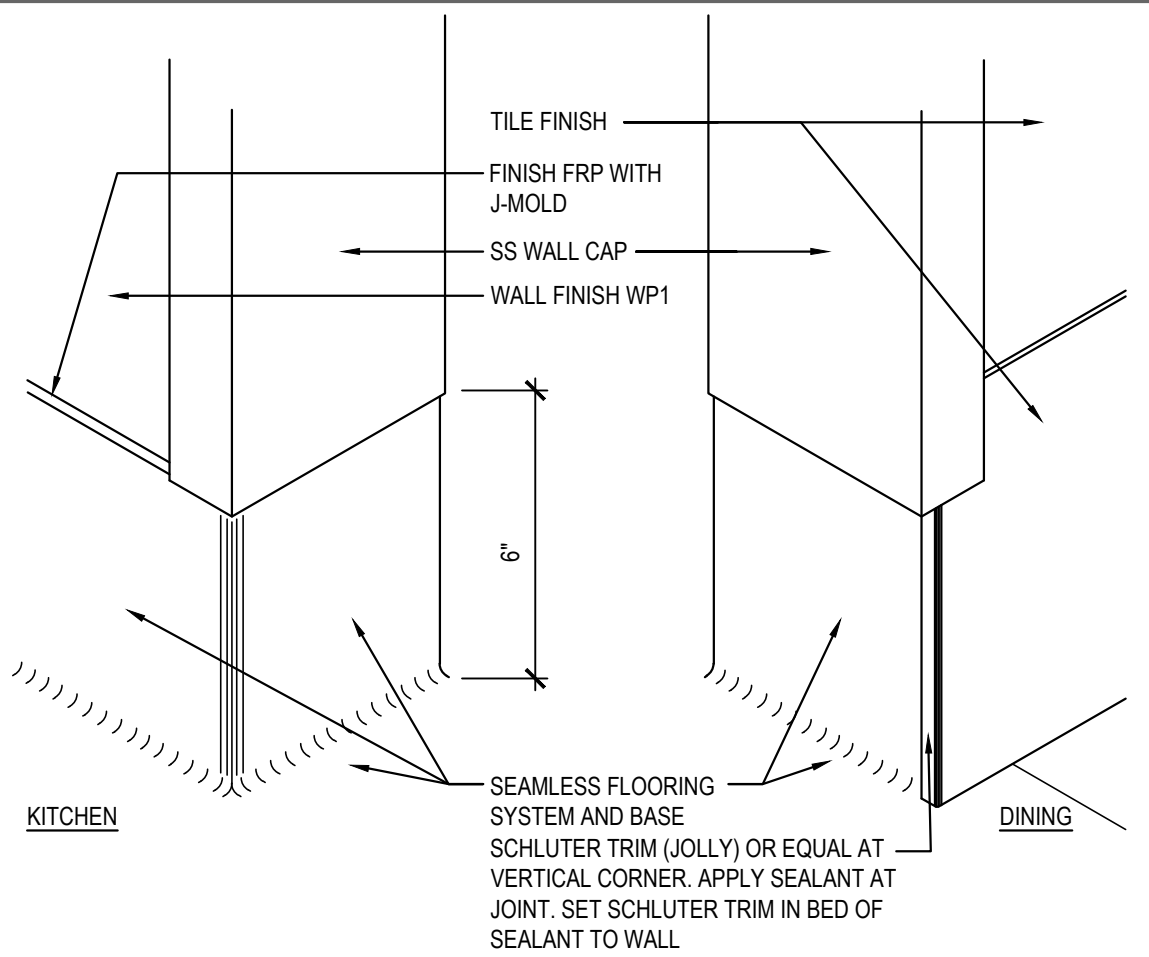
NOTE:
G.C. TO REFER CORE DRILL LOCATION ON SHEET A-109



STANDARD CORE DRILL TABLE

17

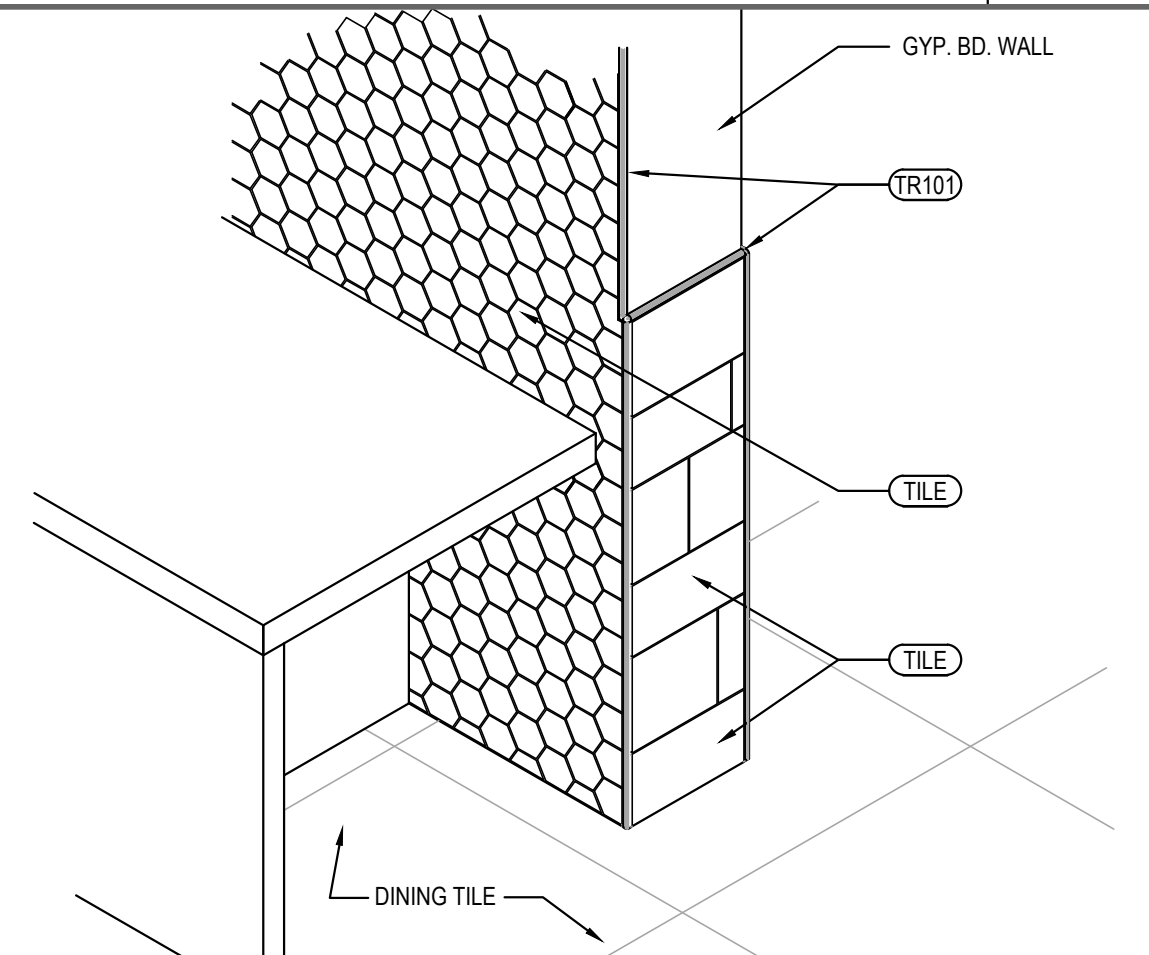
NTS A-404



WALL BASE

14

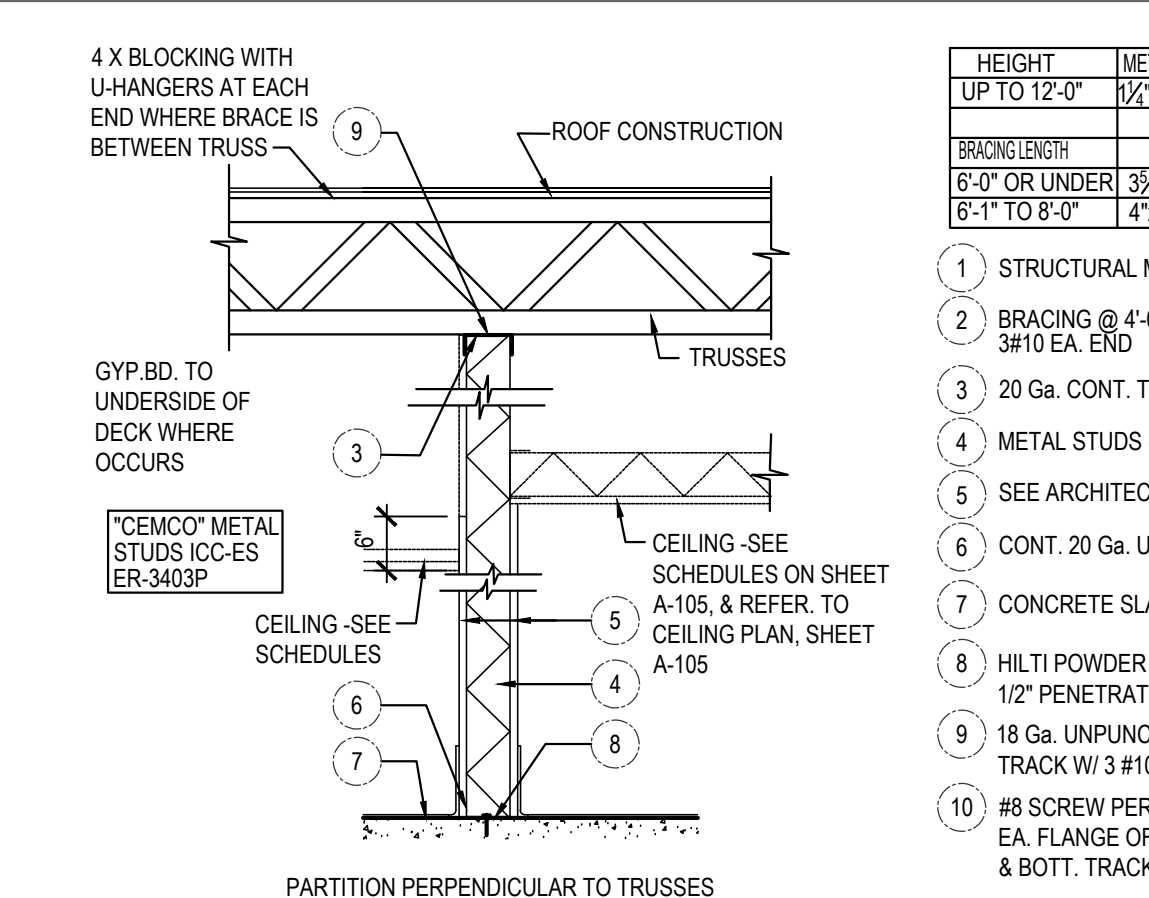
Scale= 3" = 1'-0" A-404



OUTSIDE CORNER ISOMETRIC

13

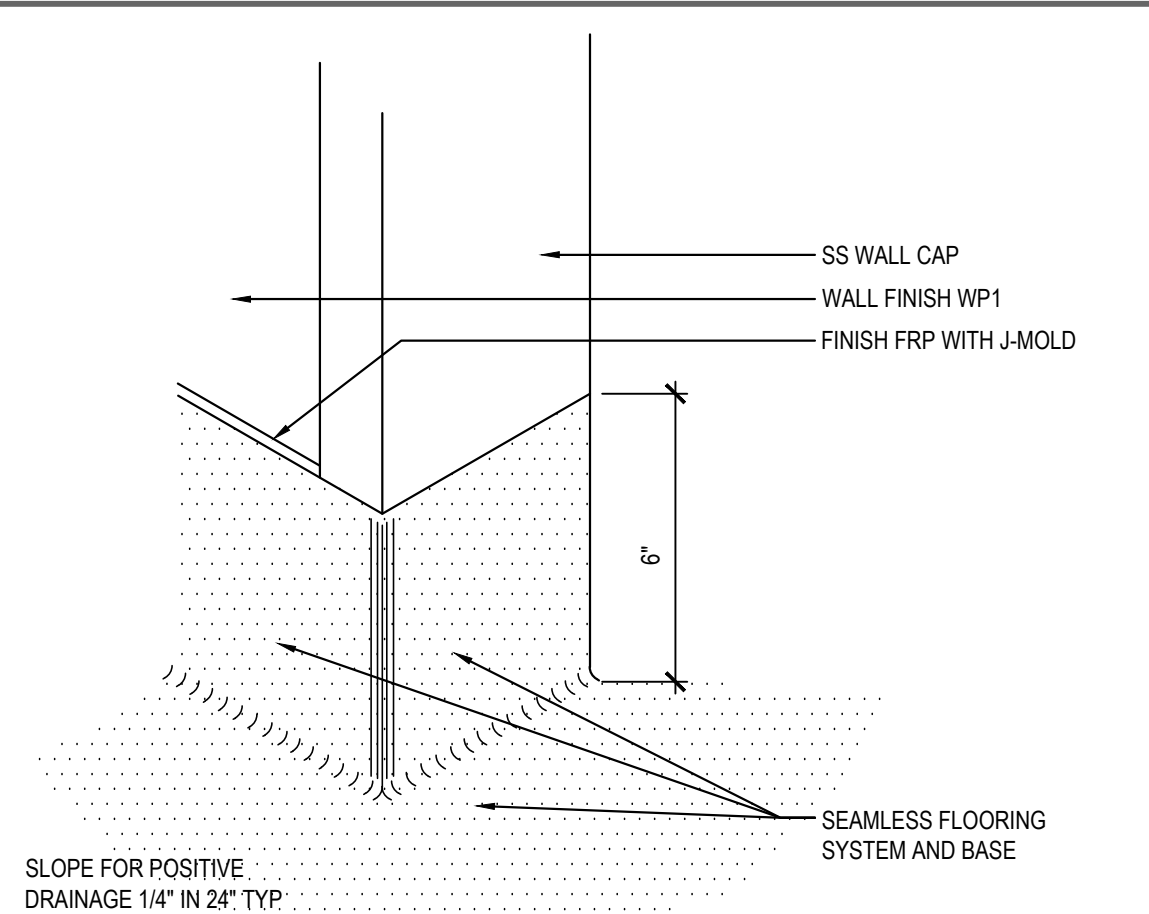
Scale= 3/4" = 1'-0" A-404



PARTITION DETAILS

10

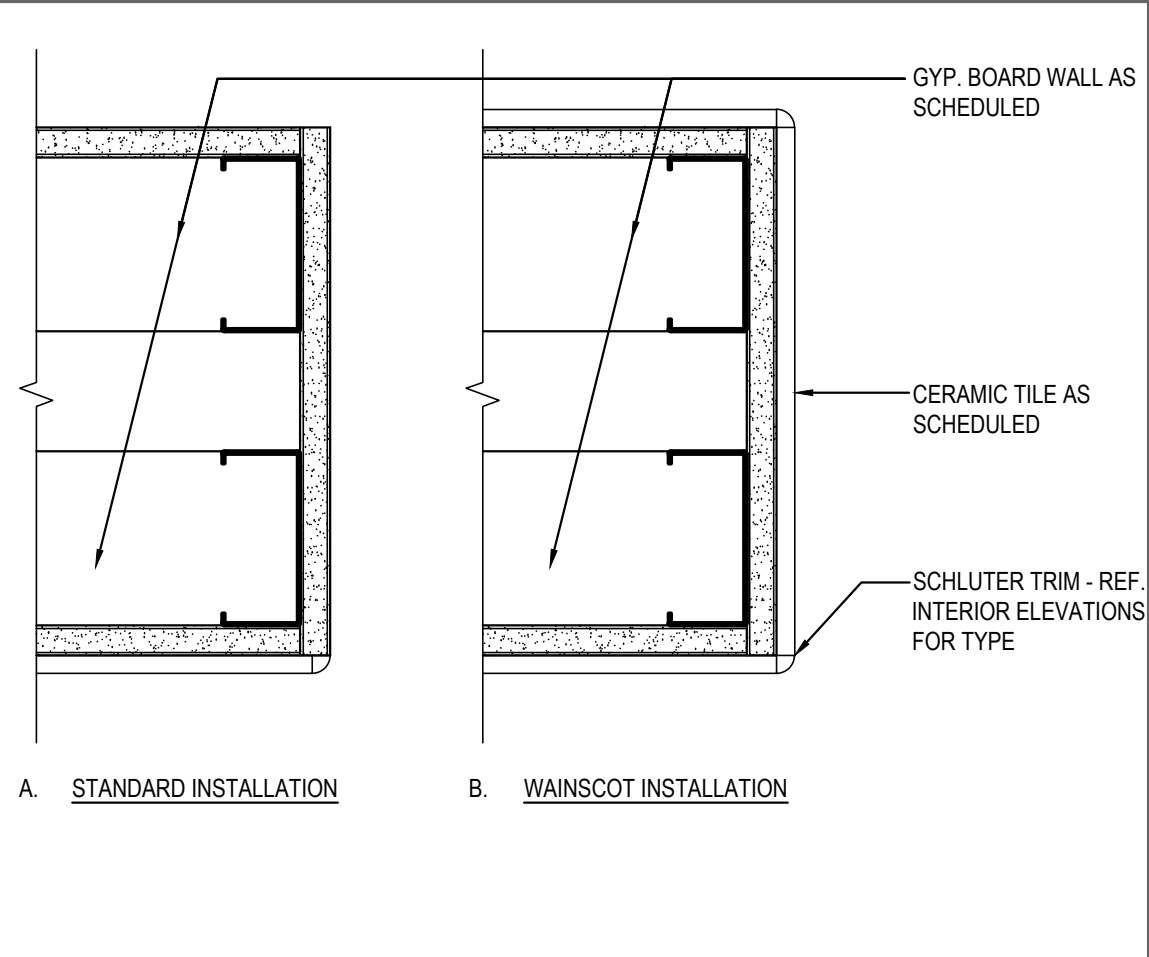
Scale= 3/4" = 1'-0" A-404



TYPICAL WALL BASE

12

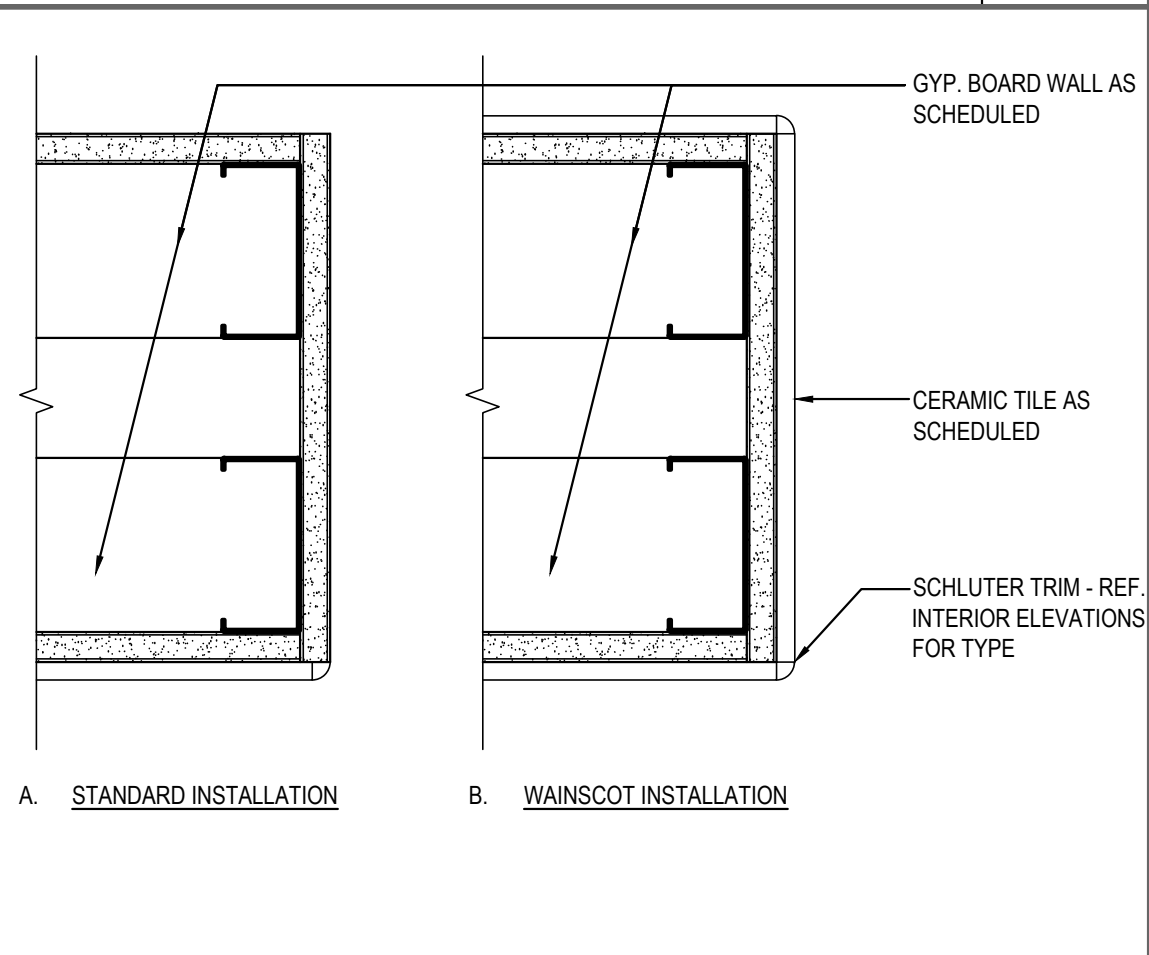
Scale= 3" = 1'-0" A-404



PLAN SECTION WALL DETAIL

11

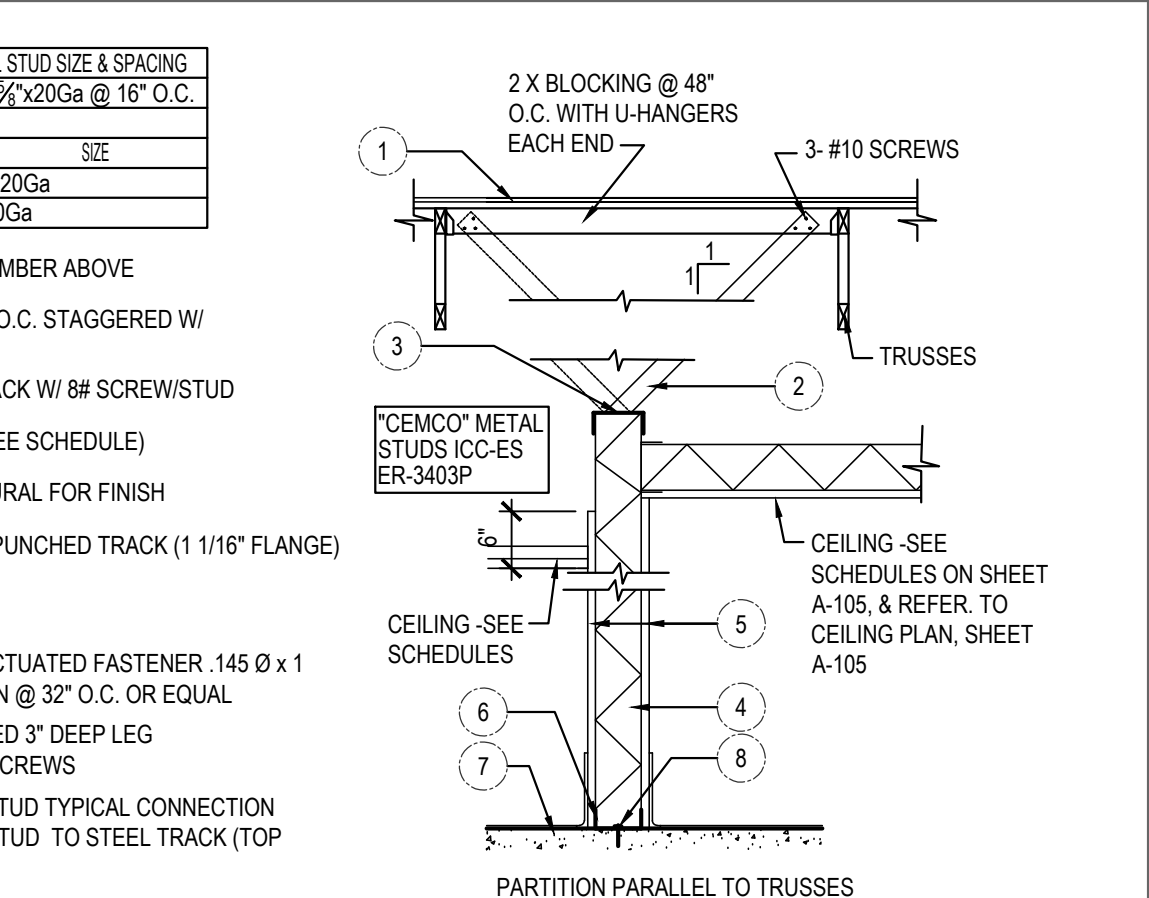
Scale= 3" = 1'-0" A-404



PLAN SECTION WALL DETAIL

11

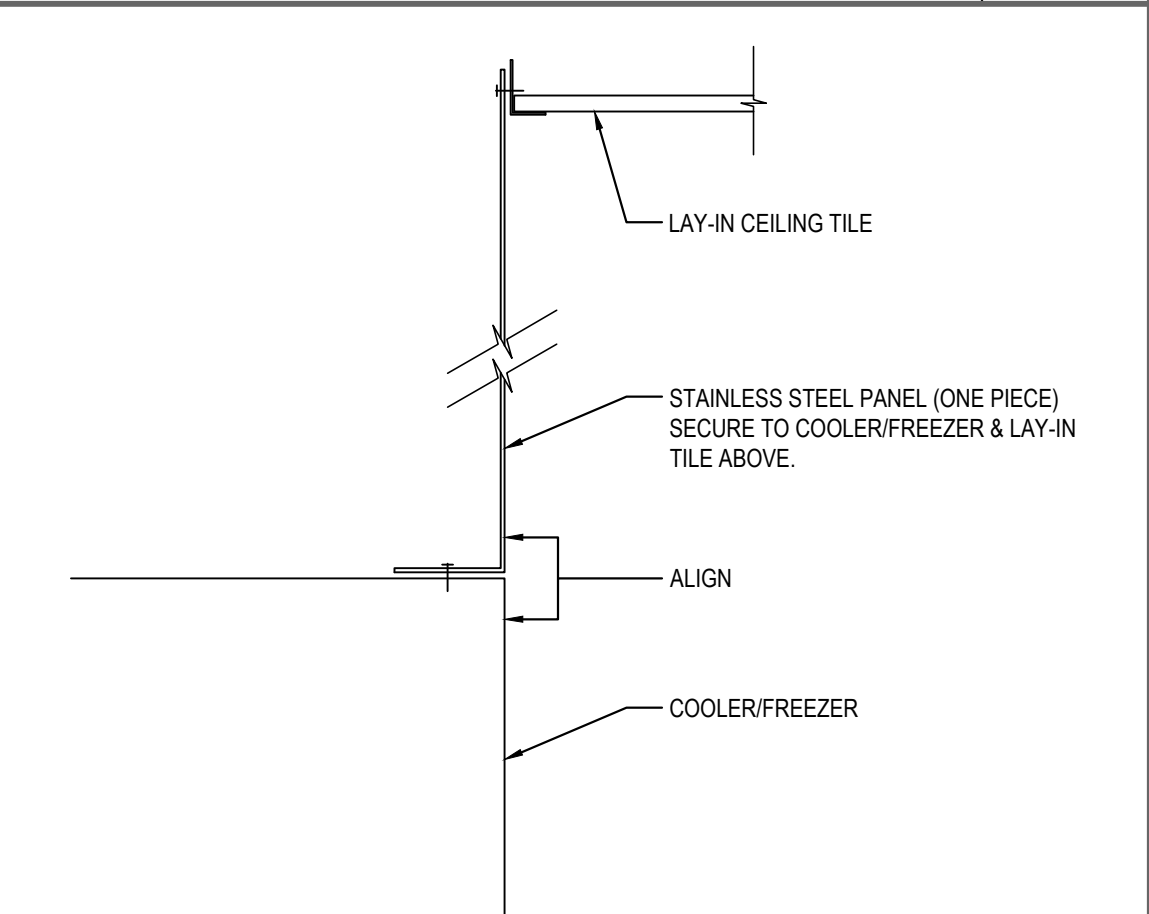
Scale= 3" = 1'-0" A-404



PARTITION DETAILS

10

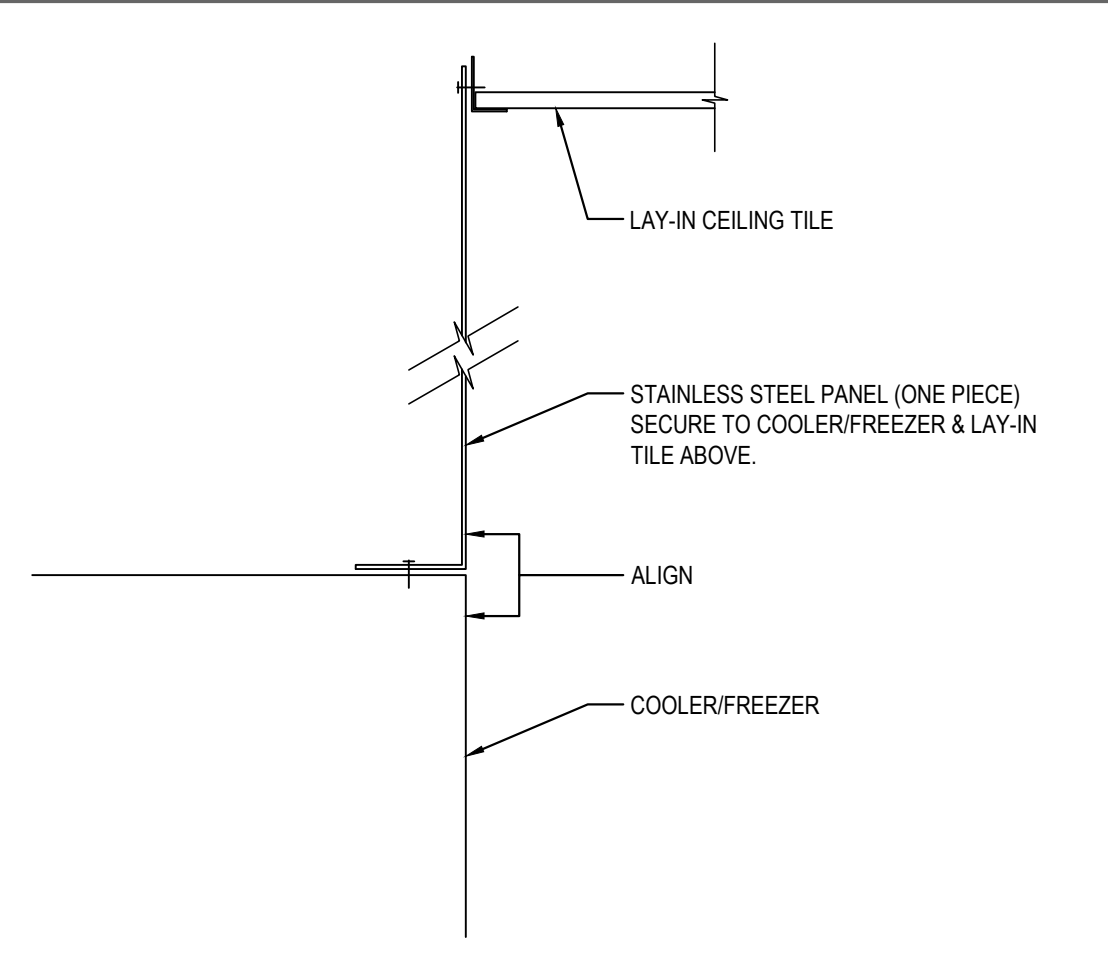
Scale= 3/4" = 1'-0" A-404



S.S. DETAIL @ COOLER / FREEZER

8

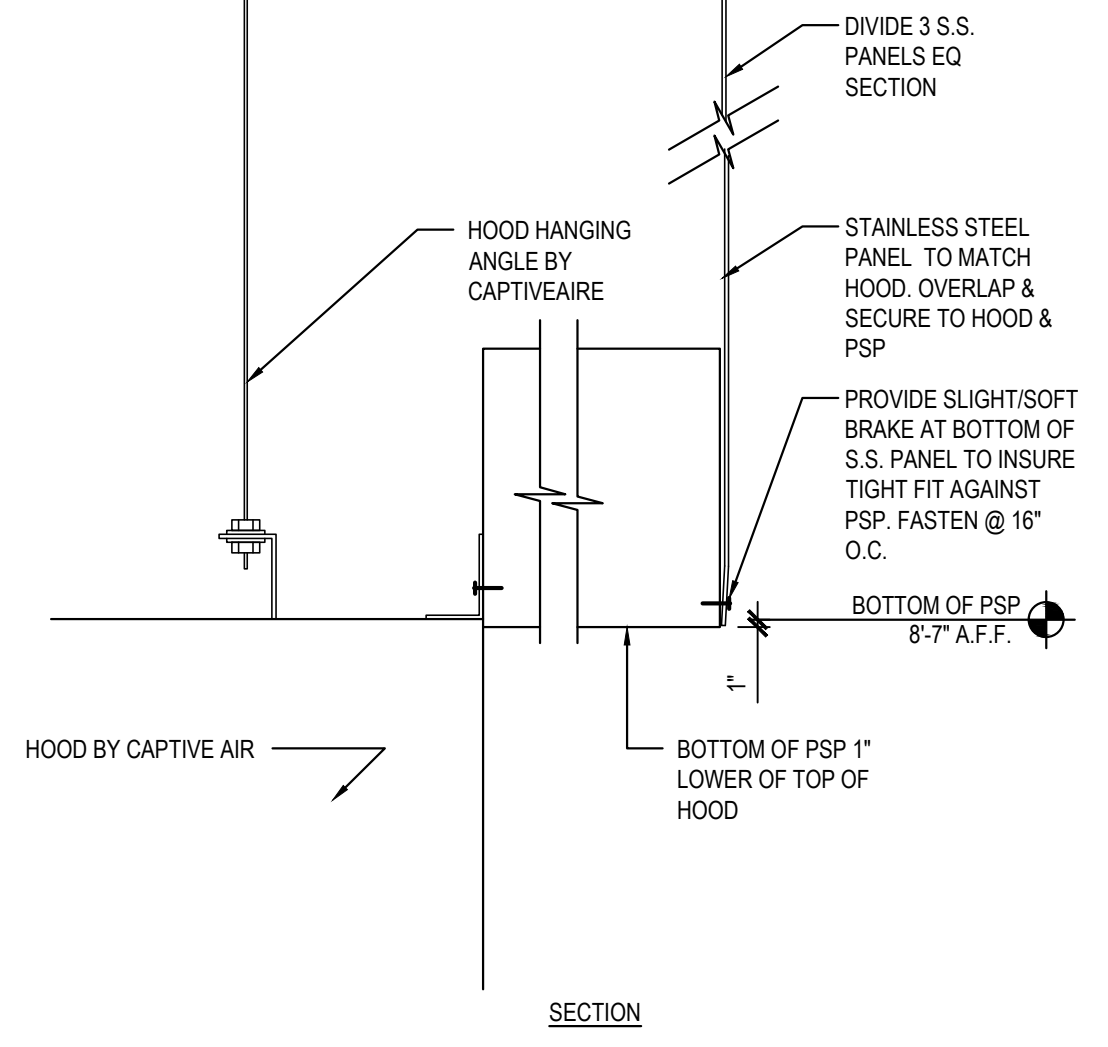
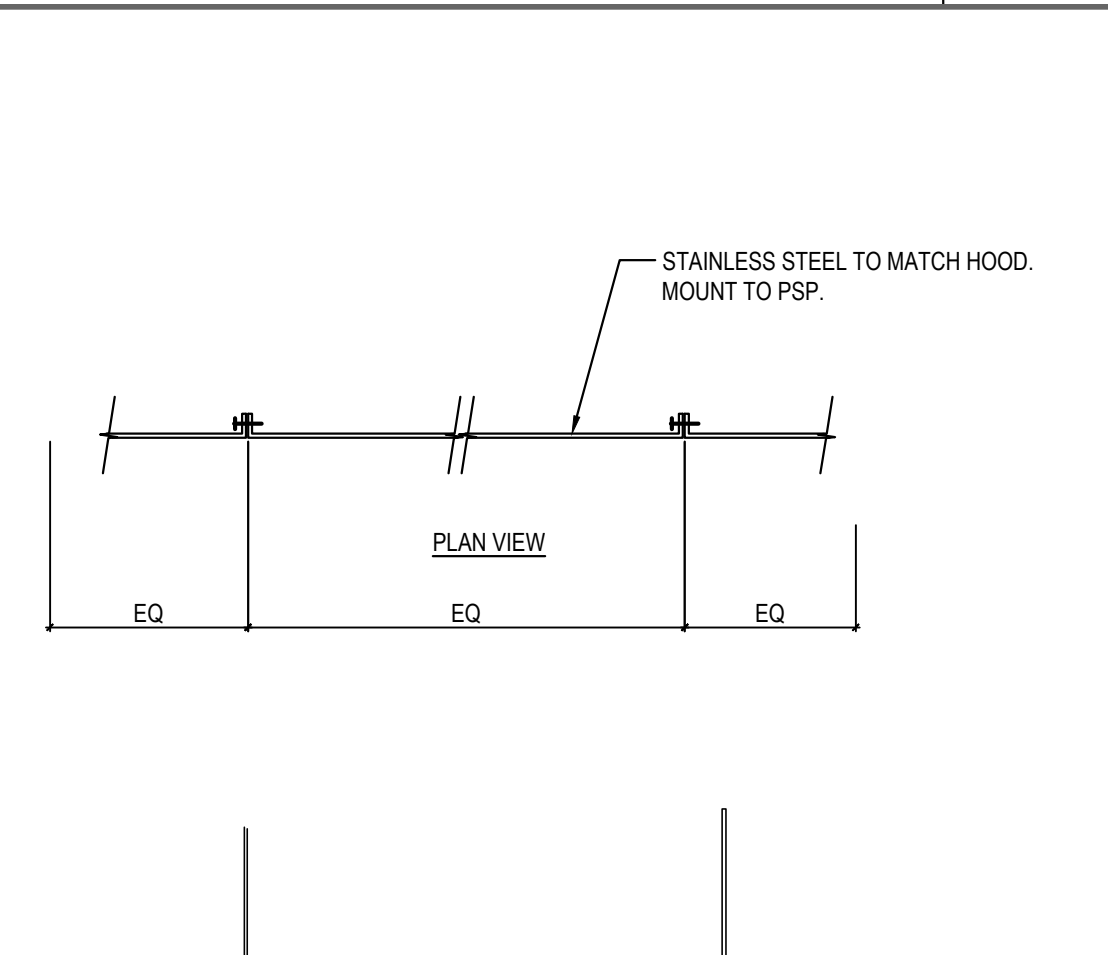
Scale= 1/2" = 1'-0" A-404



S.S. DETAIL @ COOLER / FREEZER

8

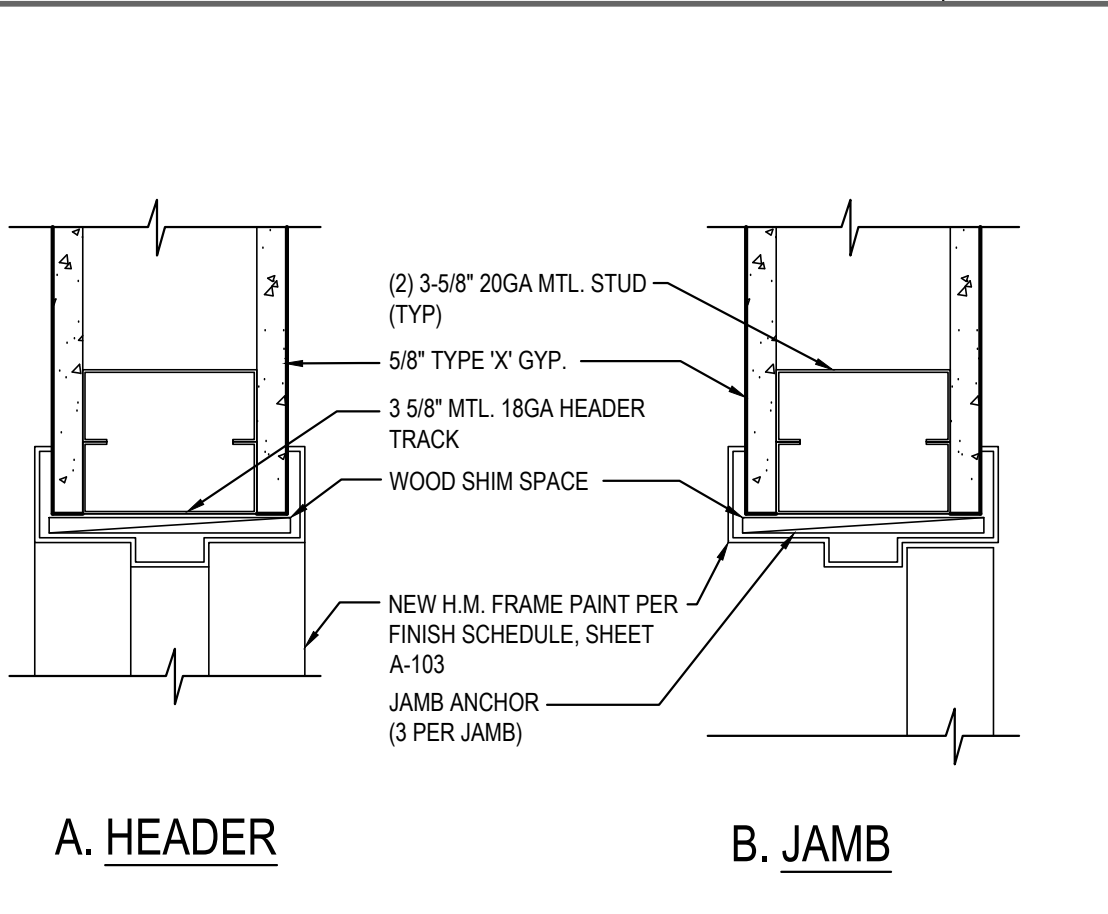
Scale= 1/2" = 1'-0" A-404



S.S. DETAIL @ EXHAUST HOOD

6

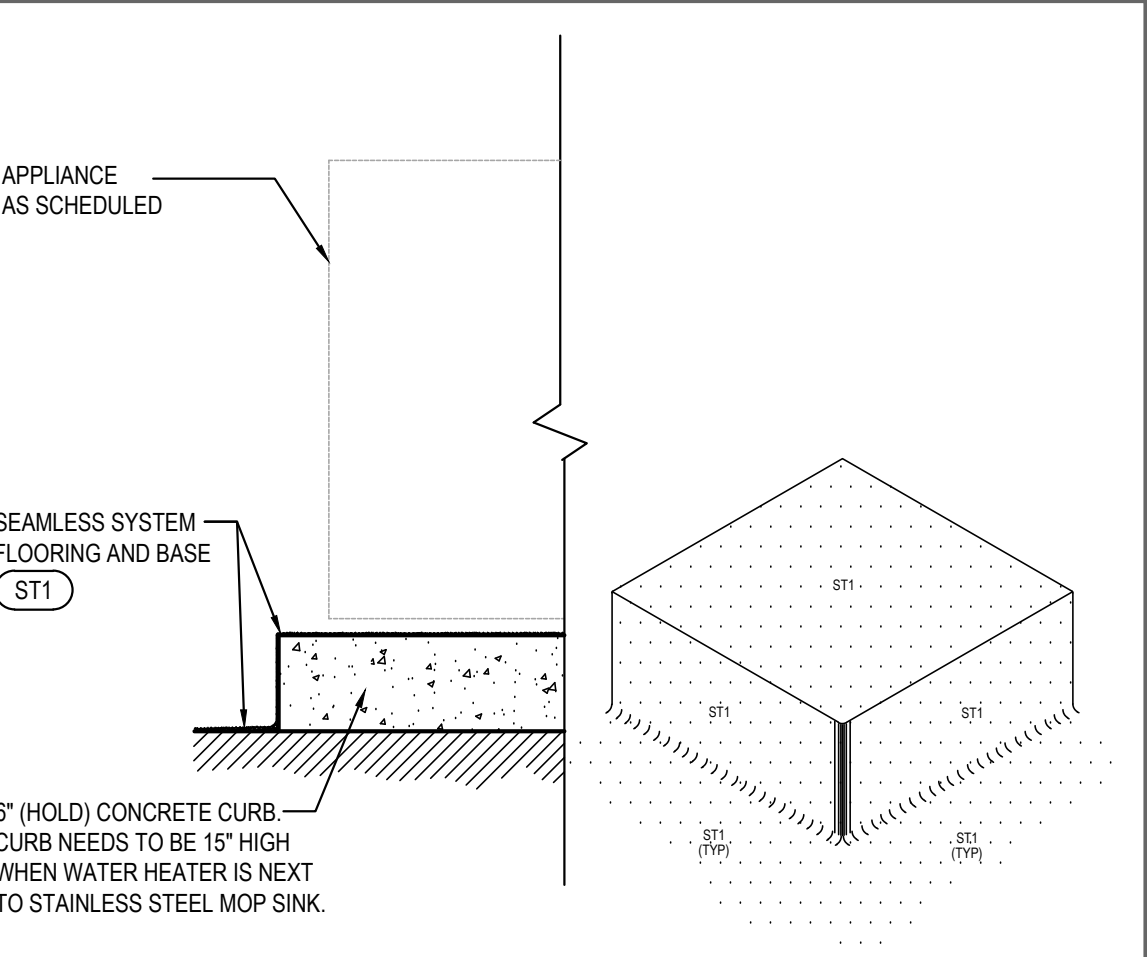
Scale= 1/2" = 1'-0" A-404



INTERIOR DOOR HEADER/JAMB

5

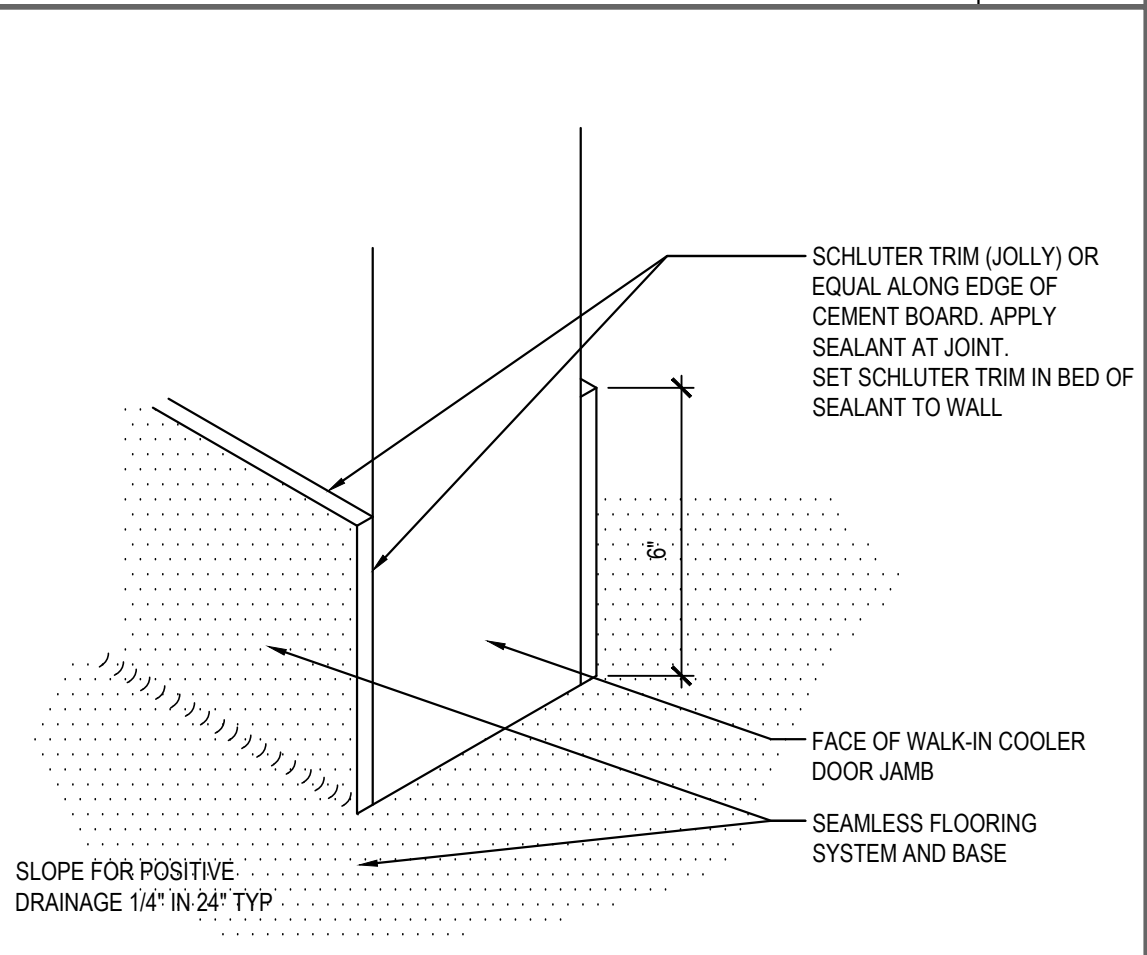
Scale= 3" = 1'-0" A-404



6" CURB DETAIL

4

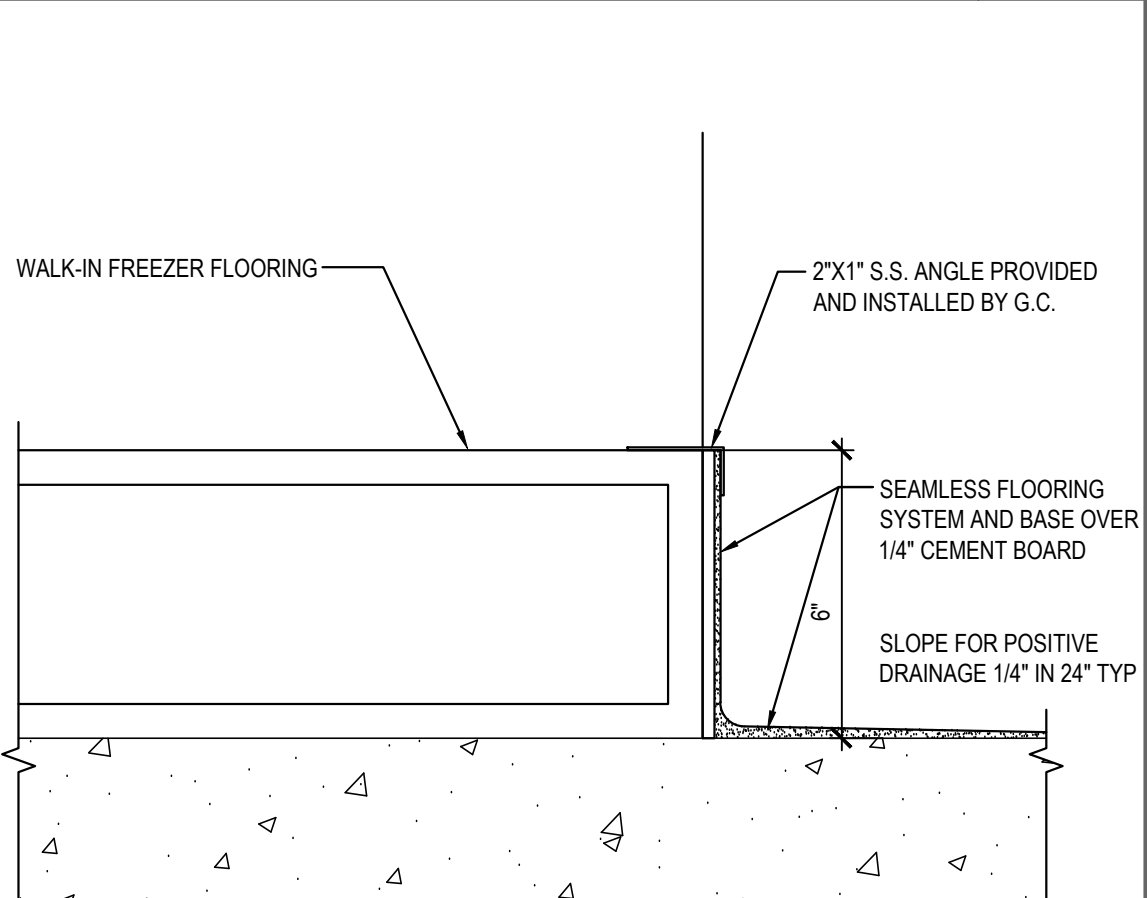
Scale= 1" = 1'-0" A-404



WALL BASE @ COOLER

3

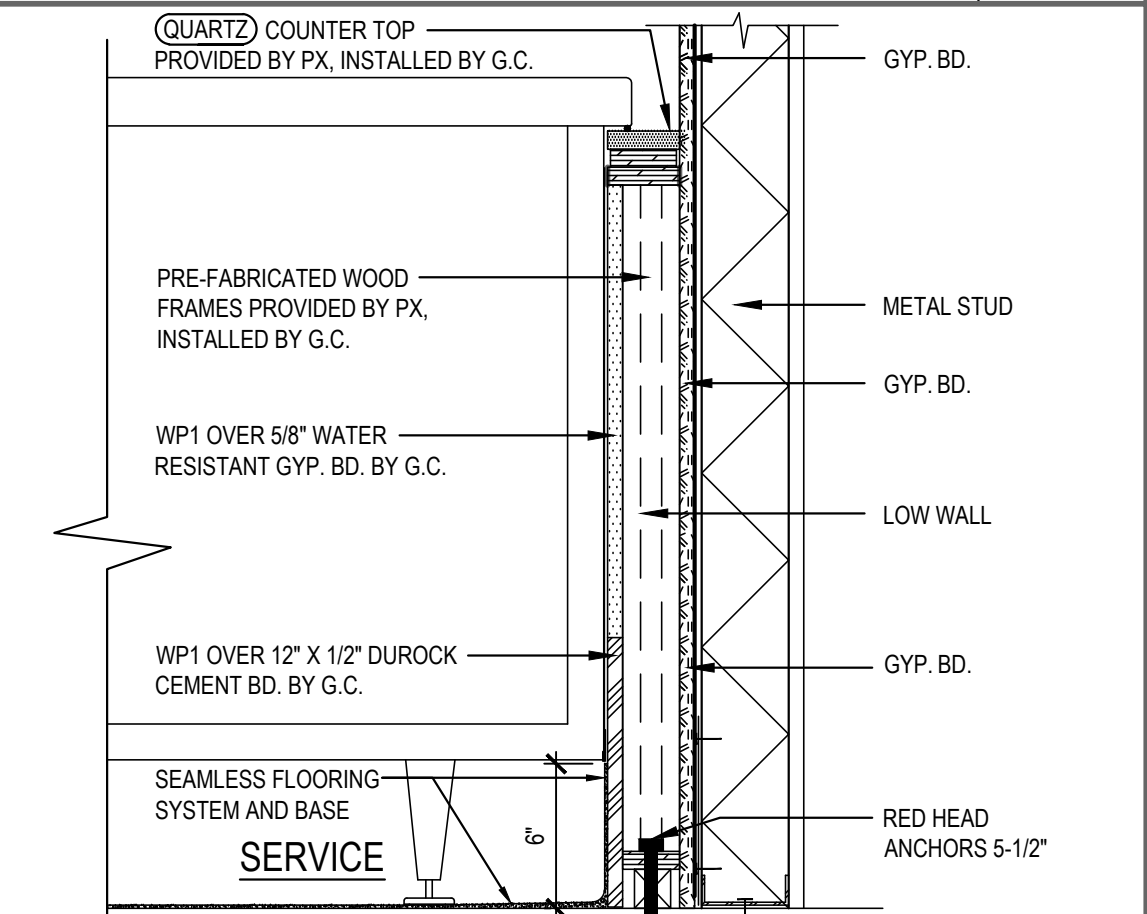
Scale= 3" = 1'-0" A-404



WALL BASE @ FREEZER

2

Scale= 3" = 1'-0" A-404



SERVICE COUNTER END DETAIL

1

Scale= 1 1/2" = 1'-0" A-404



PANDA EXPRESS, INC.
1683 Walnut Grove Ave.
Rosemead, California
91770
Telephone: 626.799.9898
Facsimile: 626.372.8288

All ideas, designs, arrangement and plans indicated or
represented by this drawing are the property of Panda
Express Inc. and were created for use on this specific project.
None of these ideas, designs, arrangements or plans may be
used by or disclosed to any person, firm, or corporation
without the written permission of Panda Express Inc.

REVISIONS:

ISSUE DATE:

1st	DEVELOPER REVIEW	07.26.19
2nd	SITE PLAN SUBMITTAL	08.26.19
3rd	SITE COMMENTS	09.05.19
4th	ISSUE FOR PERMIT	10.01.19
5th	ISSUE FOR BID	11.07.19

DRAWN BY: PM / KL / EA

PANDA PROJECT #: S8-20-D7163

ARCH PROJECT #: 19027



Heights Venture
ARCHITECTURE ♦ DESIGN

HOUSTON 1111 North Loop West, Suite 800 77008 713.869.1163 V
DALLAS 5741 Legacy Drive, Suite 320 Plano, Texas 75024 972.490.7282 V

PANDA EXPRESS

2096 INTERSTATE DR.
OPELIKA, AL 36801
3600 FSDT
TWW REMODEL

A-404

ARCHITECTURAL
DETAILS

TRUE WARM & WELCOME

BID ISSUE