

CORNER RECORD

Agency Index

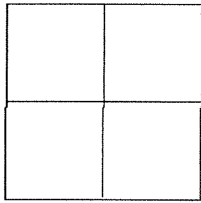
BK 128 PG 69

Document Number

CR 12906

City of BERKELEYCounty of ALAMEDA

, California

Brief Legal Description CITY OF BERKELEY MONUMENT B0462, LOCATED AT ALLSTON WAY & FOURTH STREET.**CORNER TYPE****COORDINATES (Optional)**

Government Corner ☐ Control ☒
Meander ☐ Property ☐
Rancho ☐ Other ☐

Date of Survey 2/5/19

N. _____ E. _____

Elevation _____

Units Metric ☐ U.S. Survey Foot ☐

Horizontal Datum _____

Zone _____ Epoch Date _____

Vertical Datum _____

☐ Complies with Public Resources Code §§8801-8819☐ Complies with Public Resources Code §§8801-8902

PLS Act Ref.:

☐ 8765(d)☒ 8771☐ 8773☐ Other:Corner/
Monument:☐ Left as found☐ Established☐ Rebuilt☒ Pre-Construction☐ Found and tagged☐ Reestablished☒ Referenced☐ Post-Construction

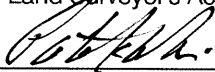
Narrative of corner identified and monument as found, set, reset, replaced, or removed.

☒ See sheet #2 for description(s)**SURVEYOR'S STATEMENT**

This Corner Record was prepared by me or under my direction in conformance with

the Professional Land Surveyor's Act on FEBRUARY 6, 2019

Signed



P.L.S. or P.C.E. No.

8178

**COUNTY SURVEYOR'S STATEMENT**

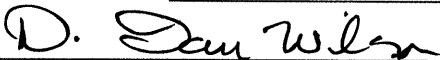
This Corner Record was received

MAR 29 2019

and examined and filed

NOV 18 2019

Signed

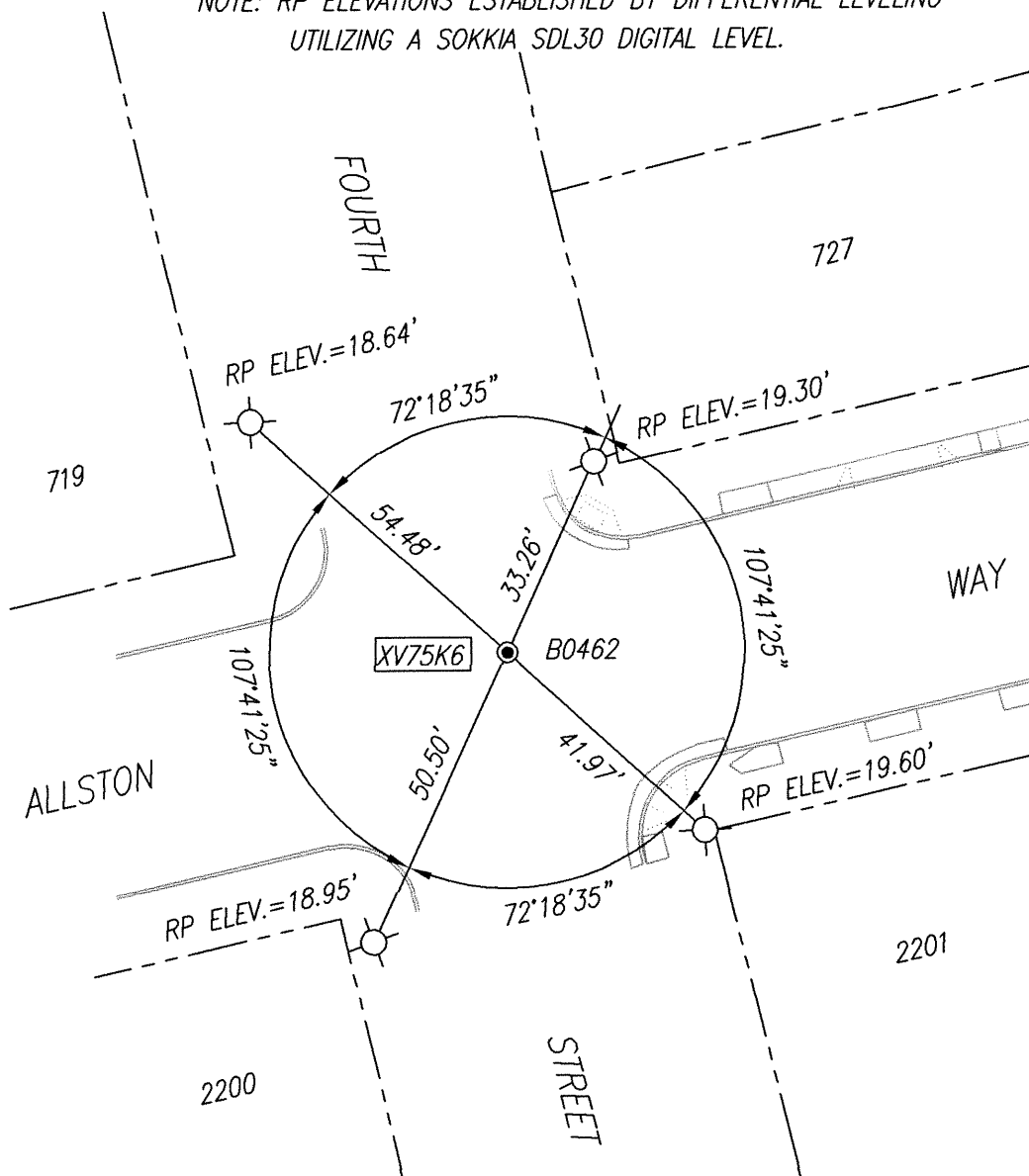


P.L.S. or P.C.E. No.

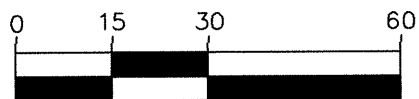
7010Title ALAMEDA COUNTY SURVEYOR**County Surveyor's Comment**

KSR JOB# 19653-19-02

NOTE: RP ELEVATIONS ESTABLISHED BY DIFFERENTIAL LEVELING
UTILIZING A SOKKIA SDL30 DIGITAL LEVEL.



GRAPHIC SCALE



(IN FEET)
1 inch = 30 ft.

LEGEND

● = FOUND CITY MONUMENT B0462; 1/4" BRASS PIN,
IN STANDARD WELL.

ELEVATION = 18.58' COB DATUM

⊗ = SET MAG NAIL IN WALK REFERENCE POINT (RP)

AA ## A# = ALAMEDA COUNTY MONUMENT ID