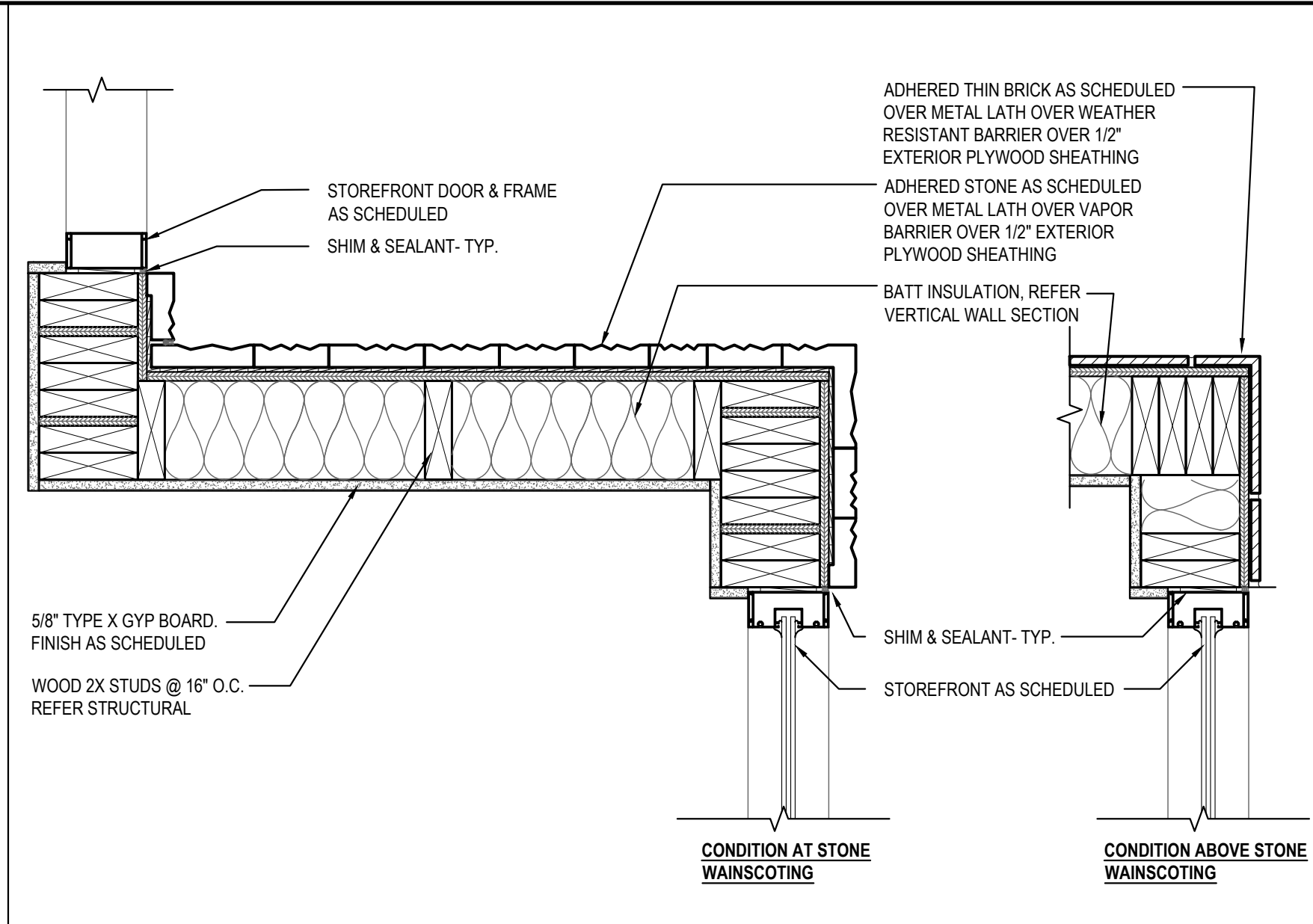


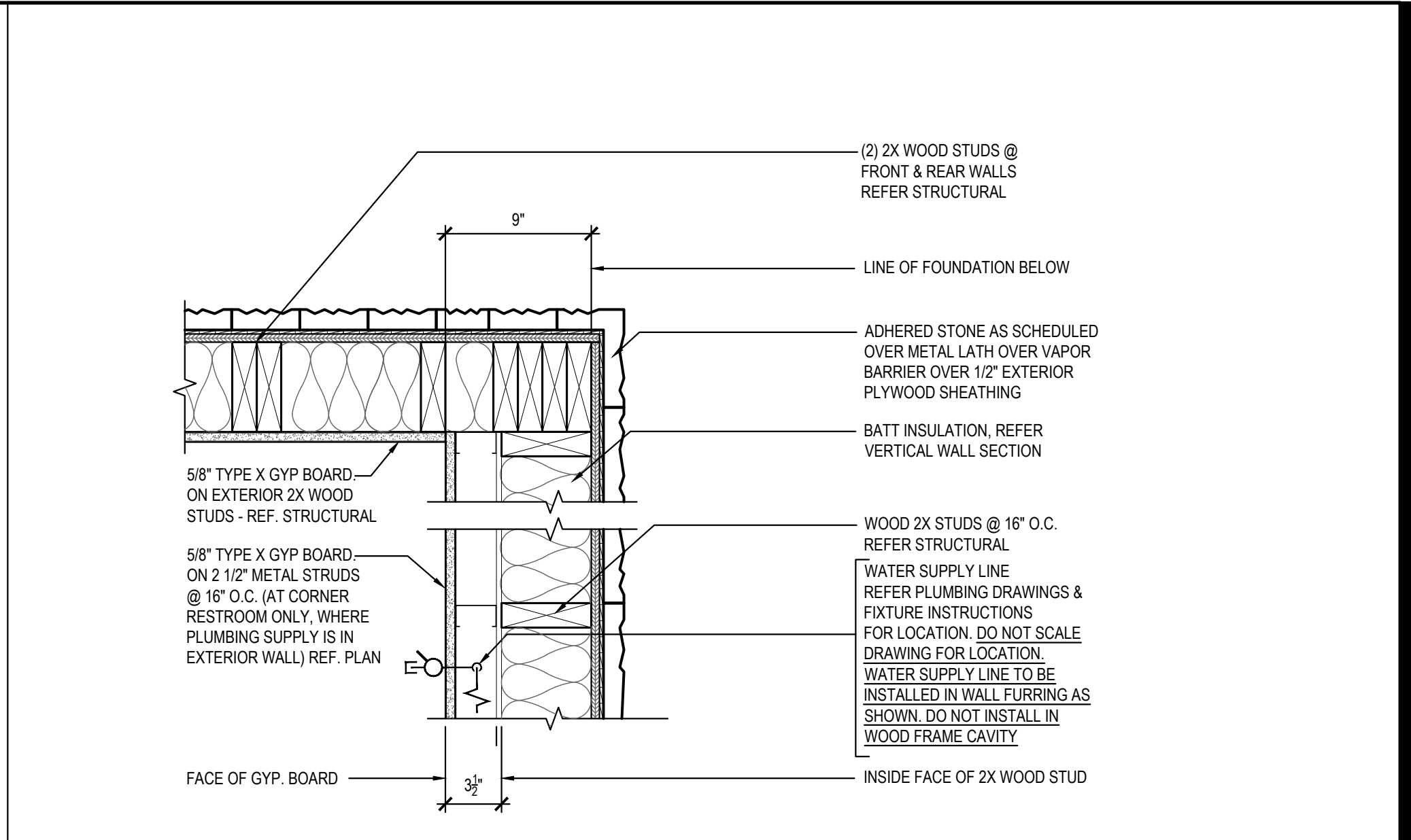
PLAN SECTION/DETAIL 09

Scale= 1 1/2" = 1'-0" A-401



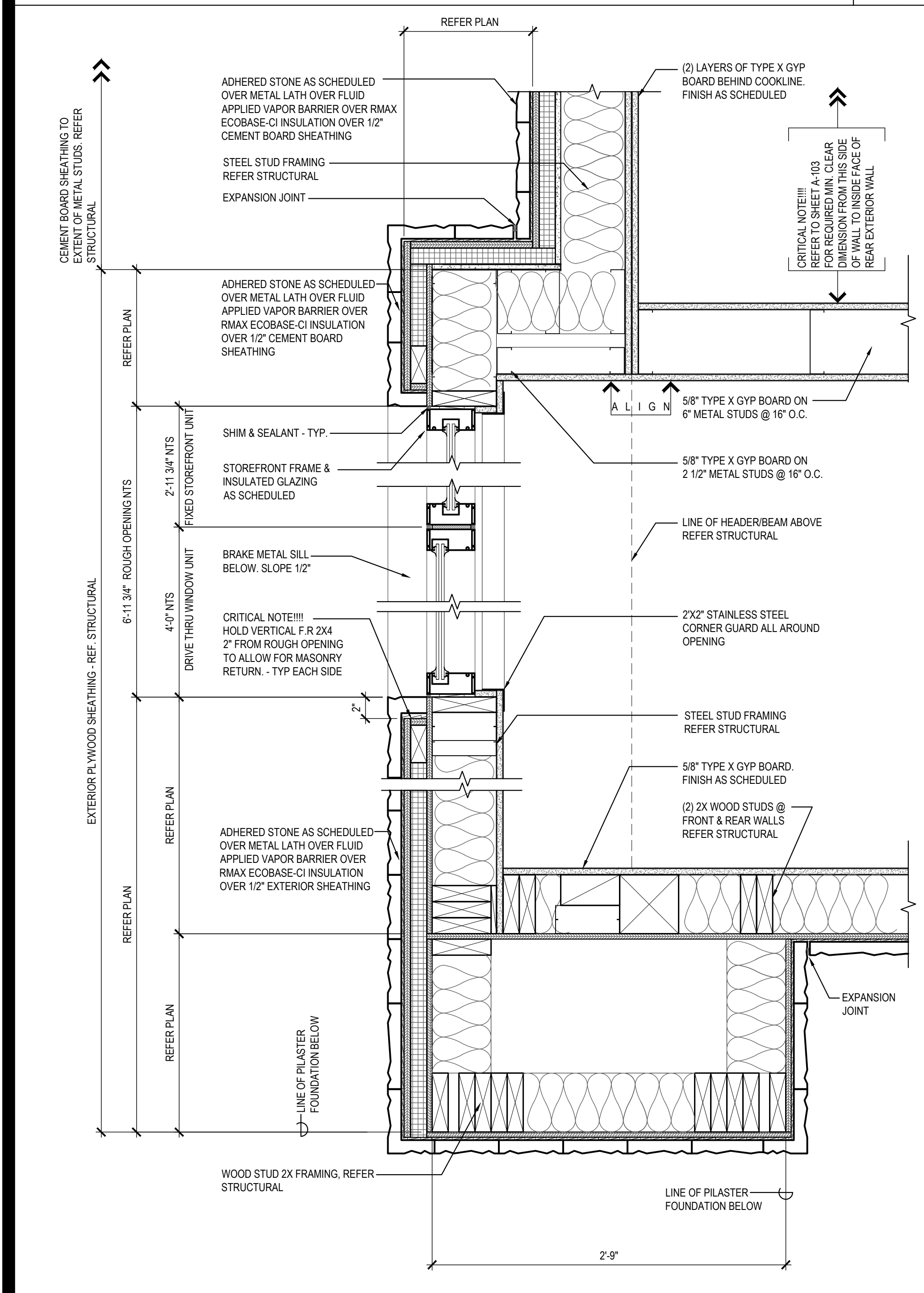
PLAN SECTION/DETAIL 06

Scale= 1 1/2" = 1'-0" A-401



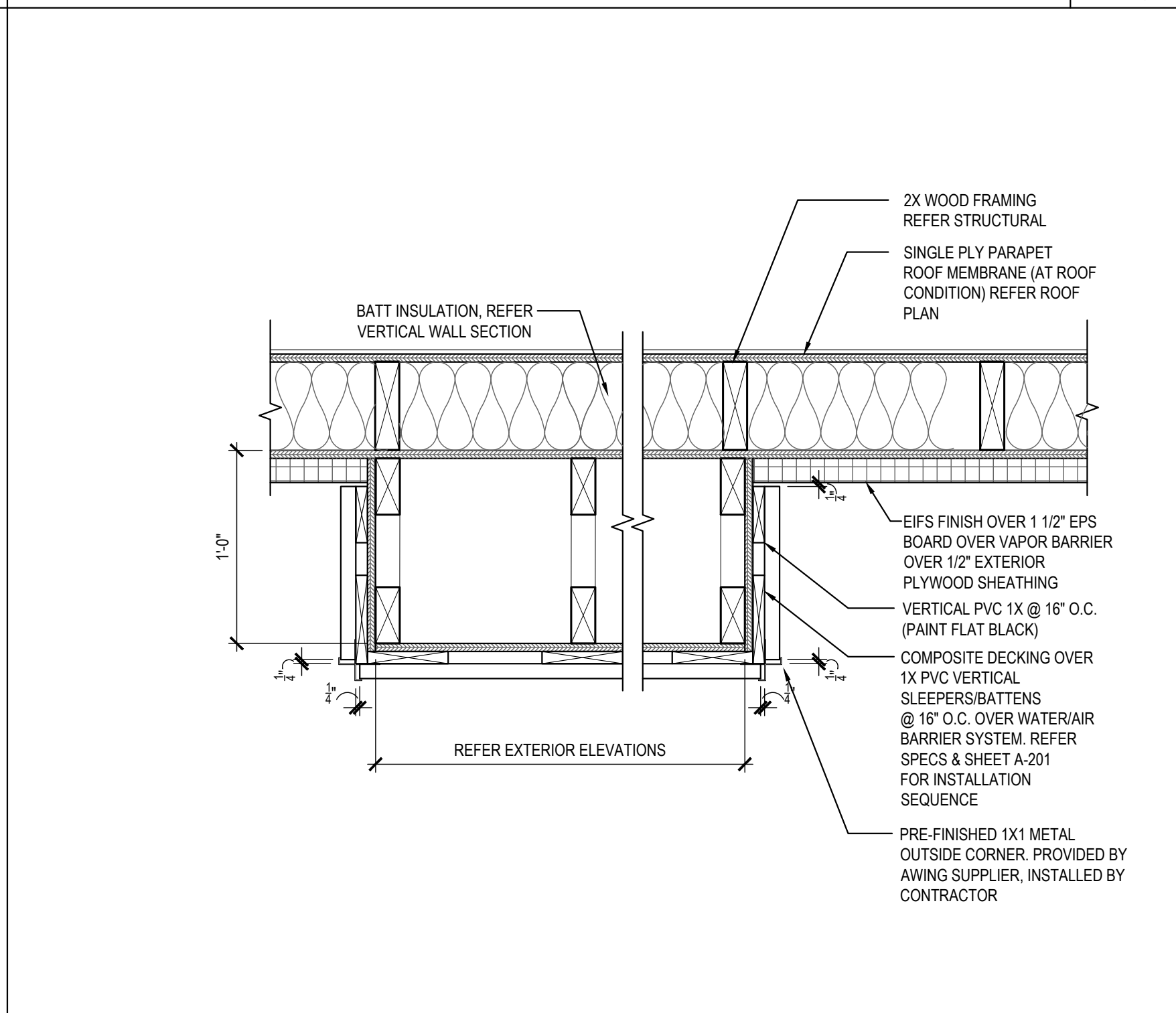
PLAN SECTION/DETAIL 03

Scale= 1 1/2" = 1'-0" A-401



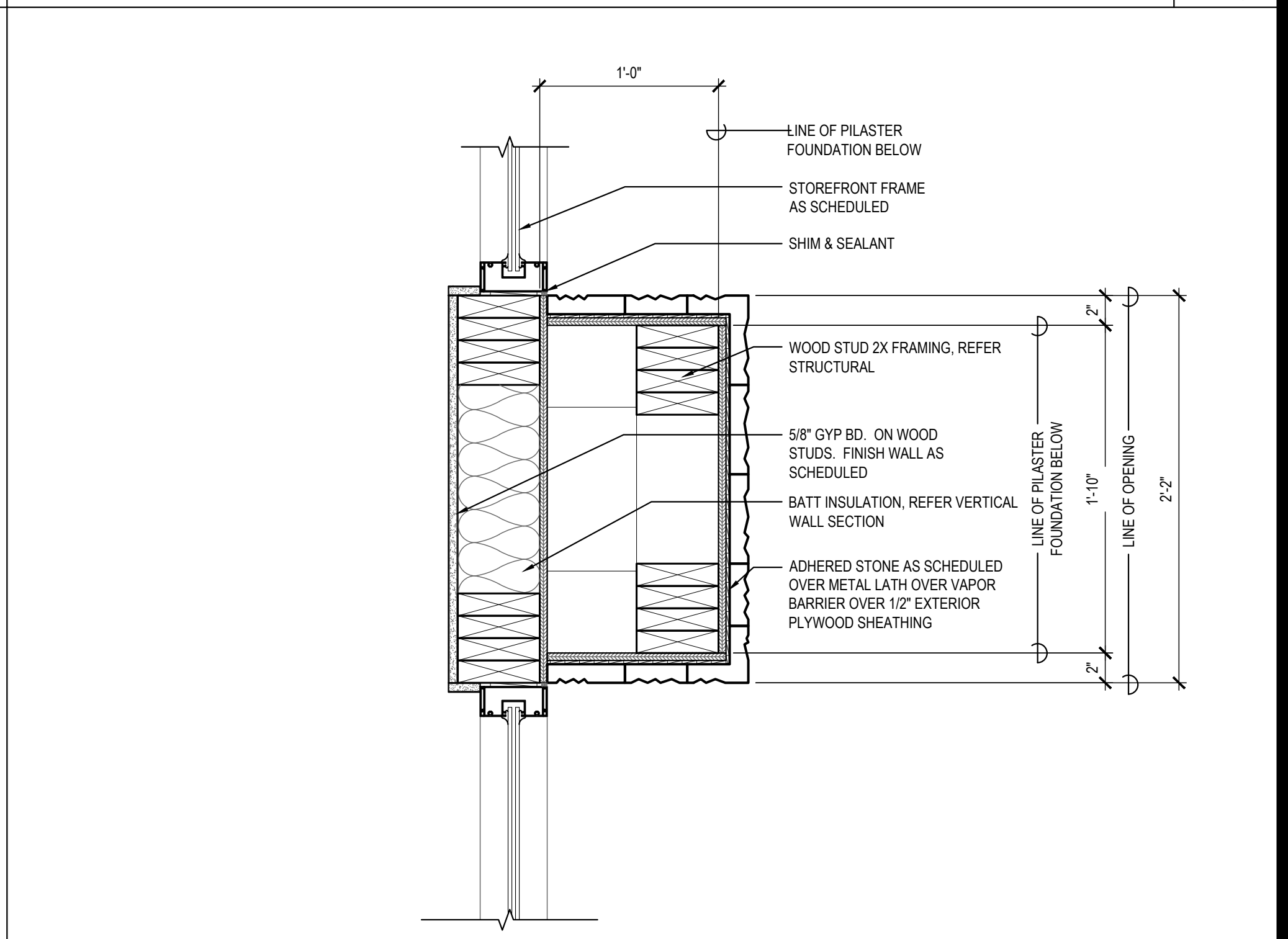
PLAN SECTION/DETAIL 08

Scale= 1 1/2" = 1'-0" A-401



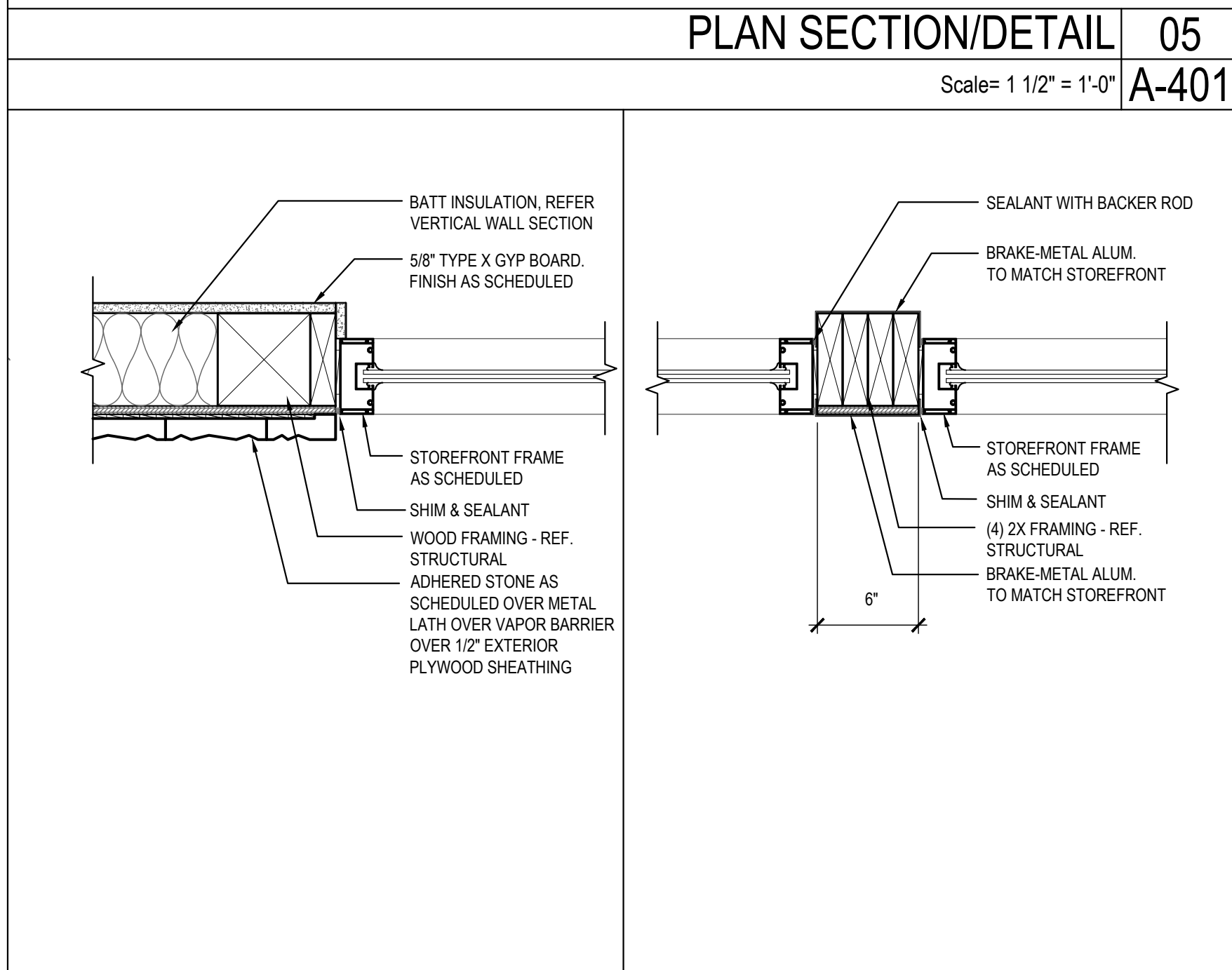
PLAN SECTION/DETAIL 05

Scale= 1 1/2" = 1'-0" A-401



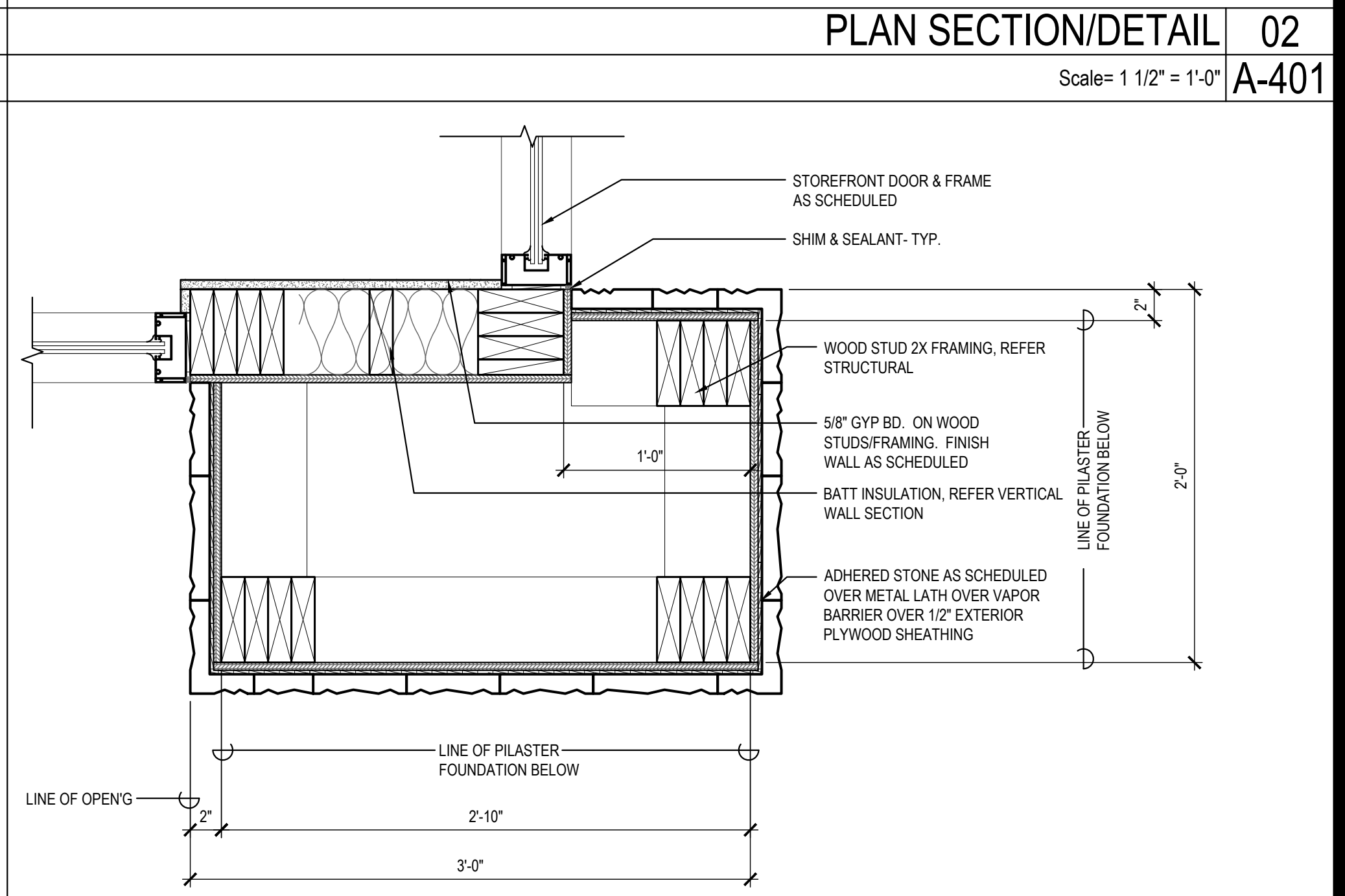
PLAN SECTION/DETAIL 02

Scale= 1 1/2" = 1'-0" A-401



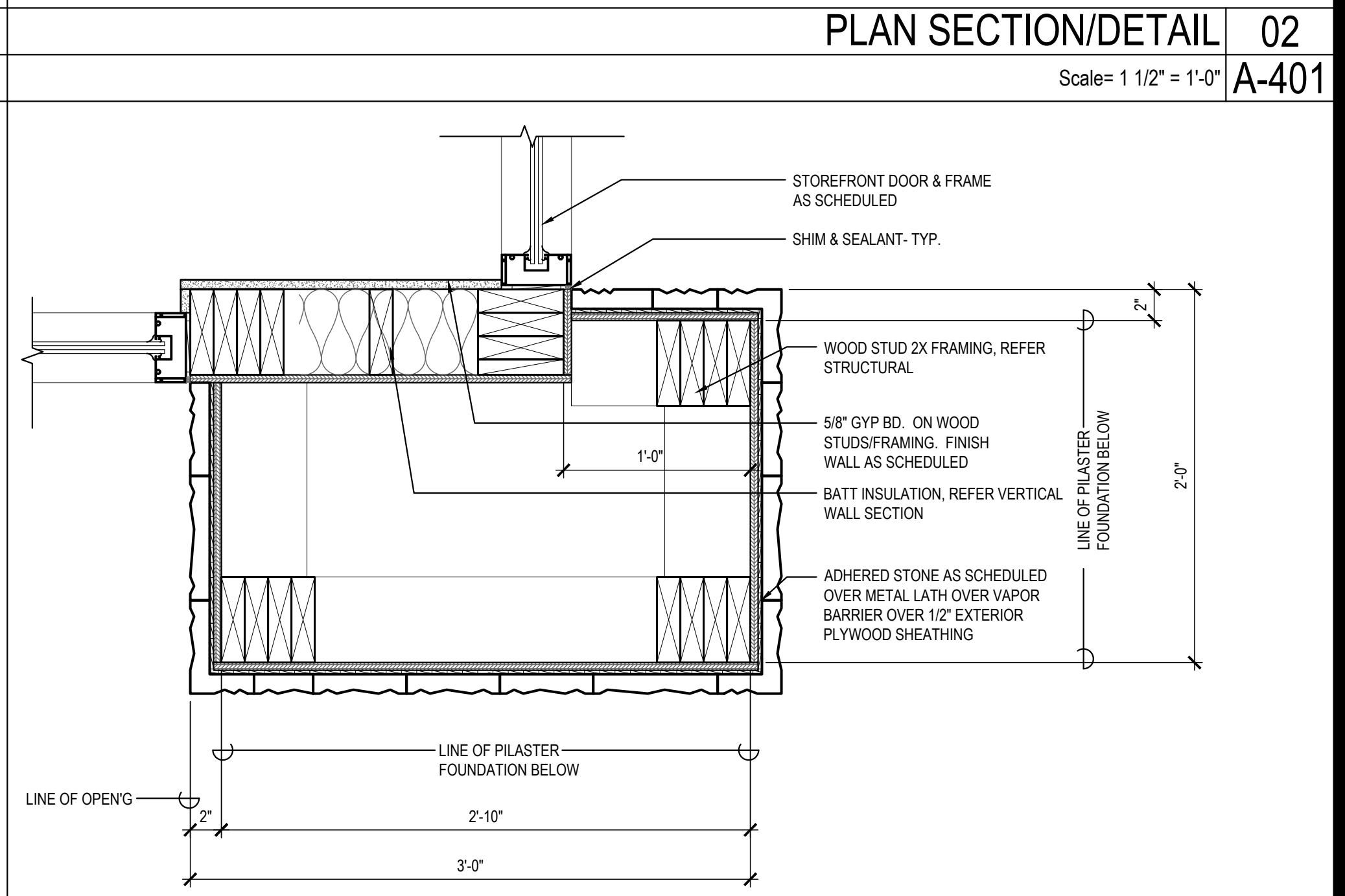
PLAN SECTION/DETAIL 07

Scale= 1 1/2" = 1'-0" A-401



PLAN SECTION/DETAIL 04

Scale= 1 1/2" = 1'-0" A-401



PLAN SECTION/DETAIL 01

Scale= 1 1/2" = 1'-0" A-401



PANDA EXPRESS, INC.  
1683 Walnut Grove Ave.  
Rosemead, California  
91770  
Telephone: 626.799.9898  
Facsimile: 626.372.8288

All ideas, designs, arrangement and plans indicated or represented by this drawing are the property of Panda Express Inc. and were created for use on this specific project. None of these ideas, designs, arrangements or plans may be used by or disclosed to any person, firm, or corporation without the written permission of Panda Express Inc.

REVISIONS:


ISSUE DATE:

1ST SITE PLAN REVIEW	02-16-21
2ND PERMIT/BID SET	04-09-21


DRAWN BY: KB

PANDA PROJECT #: S8-22-D8193

PANDA STORE #: -

ARCH PROJECT #: 20044.021



hckloverarchitect  
8813 PENROSE LANE, SUITE 400  
LEXINGTON, KS 66219  
ph: 913.649.8181 • fx: 913.649.1275

PANDA EXPRESS  
TRUE WARM & WELCOME  
1485 MAIN ST.  
HAMILTON, OH 45013

A-401

ARCHITECTURAL  
DETAILS

TRUE WARM & WELCOME 2300 R5