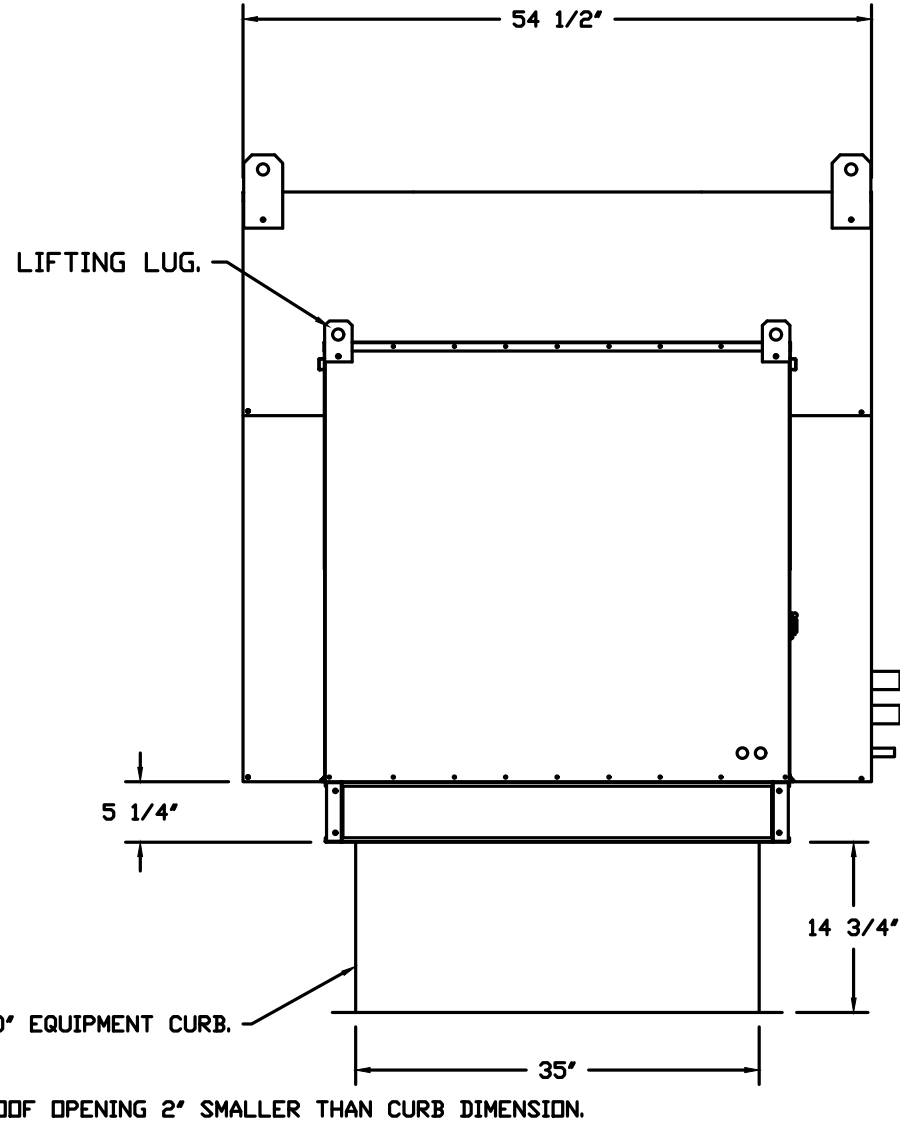
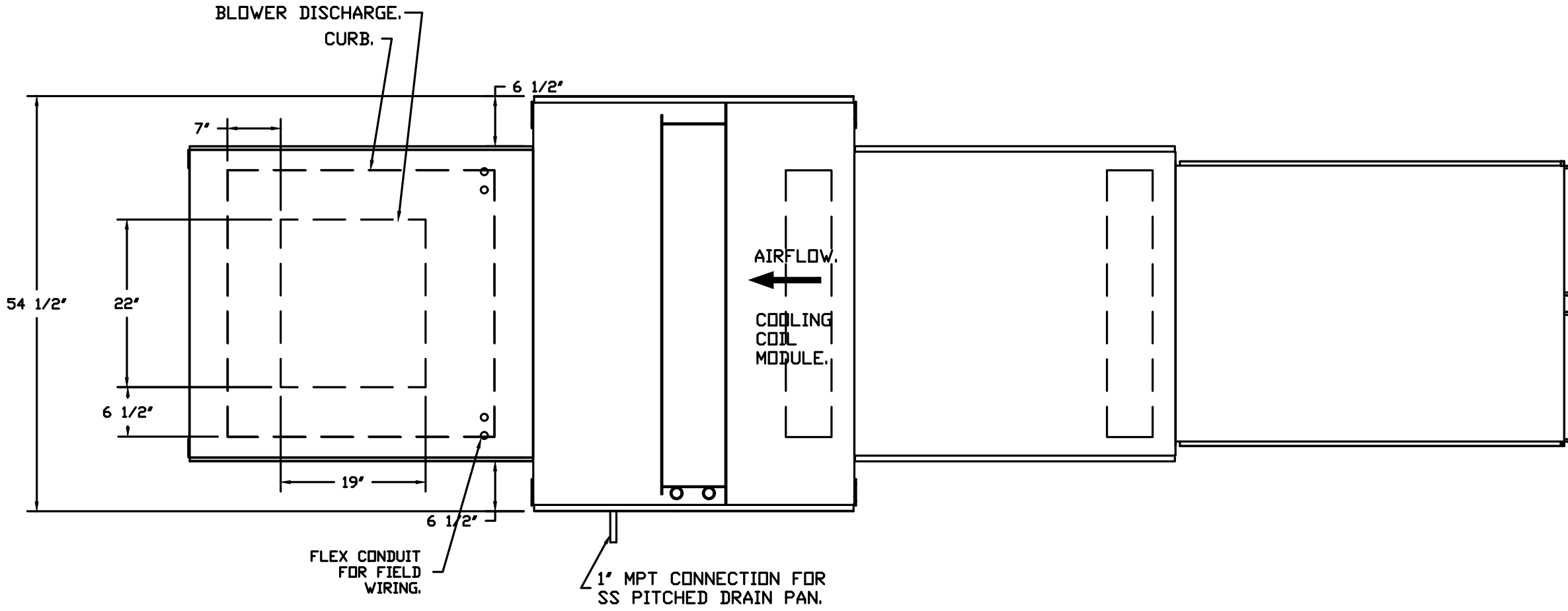


- FAN #4 EA-A3-G18-MPU - SUPPLY FAN.
1. SUPPLY UNIT WITH 18" BLOWER IN SIZE #3 HOUSING.
2. INTAKE HOOD WITH E2 FILTERS.
3. DOWN DISCHARGE - AIR FLOW RIGHT -> LEFT.
4. 10 TON, DUAL CIRCUIT (3/2) MODULAR PACKAGED COOLING OPTION FOR SIZE 3 MODULAR PACKAGED UNIT. INCLUDES CONDENSER, DX COIL, FILTER/DRYER KIT, THERMAL EXPANSION VALVE, R410A REFRIGERANT, AND REFRIGERANT PIPING. (3,600 TO 6,000 CFM) WHEN ORDERED WITH OPPOSITE AIRFLOW CONDENSERS ACCESS AND COIL PIPING WILL REMAIN IN STANDARD POSITION. DRAIN AND SLEDS WILL MOVE TO THE OPPOSITE SIDE. ANY OTHER CHANGE WILL REQUIRE CL1. CONDENSERS REQUIRE SEPARATE 600V, 3 PHASE POWER SUPPLY UNLESS ORDERED WITH SINGLE POINT CONNECTION. COIL = 3E20602M.
5. CONTROL PACKAGE FOR MOD PACKAGE UNIT COOLING ONLY UNIT. INCLUDES AIRFLOW PROVING SWITCH, RTULINK-ACHP BOARD AND TERMINAL BLOCKS.
6. INSULATED BLOWER HOUSING SIZE 3 COMMERCIAL MODULAR.
7. SHIP CONDENSERS LOOSE. THE REFRIGERATION LINES WILL NEED TO BE STUBBED OUT 12 INCHES. THE SUCTION LINES NEEDS TO BE INSULATED INSIDE THE COIL MODULE. ROTARY DISCONNECT SHOULD NOT BE INSTALLED ON THE POST, BLANK POST SHOULD BE USED IN PLACE.
8. SUPPORT SHELL FOR SIZE 3 MODULAR PACKAGE UNIT. INCLUDES CONTROL VESTIBULE. INCLUDES CONDENSER SUPPORTS. DOES NOT INCLUDE RETURN AIR OR INLET AIR DAMPER.
9. SEPARATE 120VAC WIRING PACKAGE FOR MAKE-UP AIR UNITS. OPTION MUST BE SELECTED WHEN MOUNTING VFD IN PREVIRE PANEL OR WITH DCV PACKAGE. PROVIDES SEPARATE 120VAC INPUT TO SUPPLY FAN. THIS 120V SIGNAL MUST BE RUN BY ELECTRICIAN FROM DOV TO MUA SWITCH.
11. 2 YEAR PARTS WARRANTY.

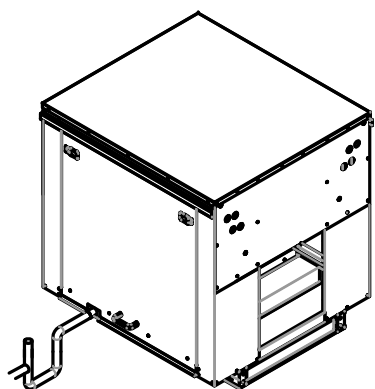
NOTE: SUPPLY DUCT MUST BE INSTALLED TO MEET SMACNA STANDARDS. A MINIMUM STRAIGHT DUCT LENGTH MUST BE MAINTAINED DOWNSTREAM OF UNIT DISCHARGE AS OUTLINED IN AMCA PUBLICATION 201. WHEN USING RECTANGULAR DUCTWORK, ELBOWS MUST BE RADIUS THROAT, RADIUS BACK WITH TURNING VANES. FLEXIBLE DUCTWORK AND SQUARE THROAT/SQUARE BACK ELBOWS SHOULD NOT BE USED. ANY TRANSITION AND/OR TURNS IN THE DUCTWORK WILL CAUSE SYSTEM EFFECT. SYSTEM EFFECT WILL DRASTICALLY INCREASE STATIC PRESSURE AND REDUCE AIRFLOW. DO NOT RELY ON UNIT TO SUPPORT DUCT IN ANY WAY. FAILURE TO PROPERLY SIZE DUCTWORK MAY CAUSE SYSTEM EFFECTS AND REDUCE PERFORMANCE OF THE EQUIPMENT. SUGGESTED STRAIGHT DUCT SIZE IS 24" x 24".



PITCHED CURBS ARE AVAILABLE FOR PITCHED ROOFS.
SPECIFY PITCH:
EXAMPLE: 7/12 PITCH = 30° SLOPE.

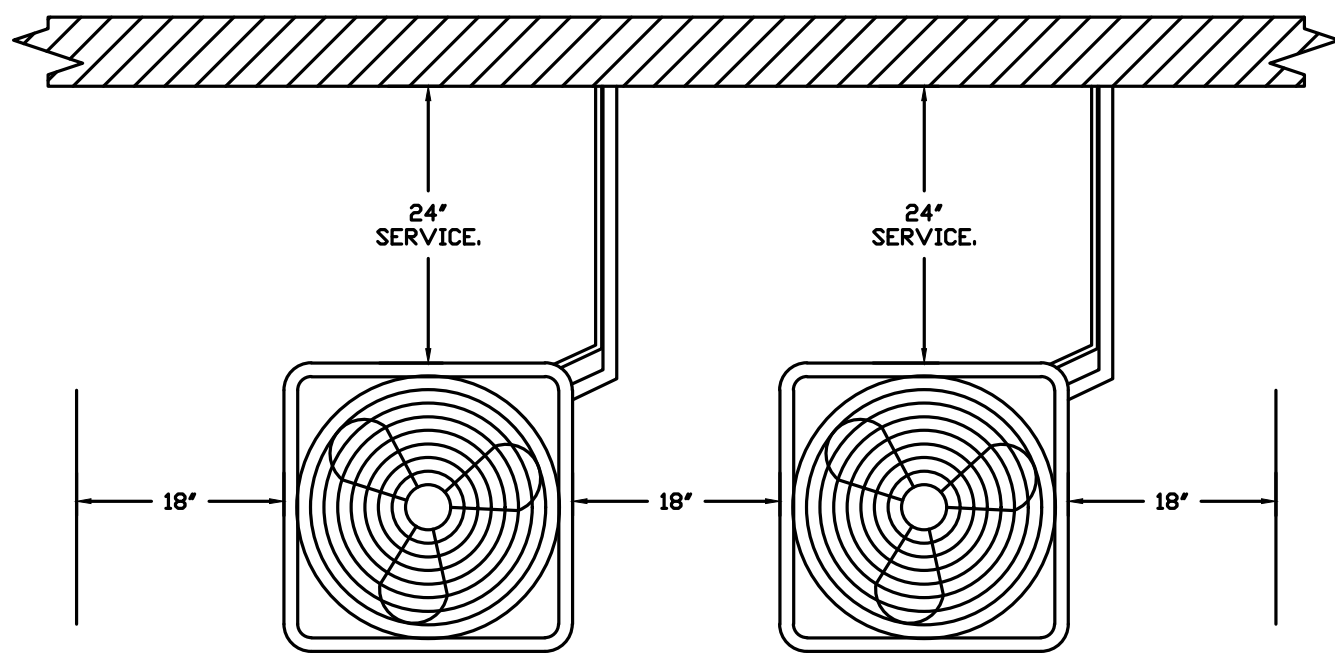
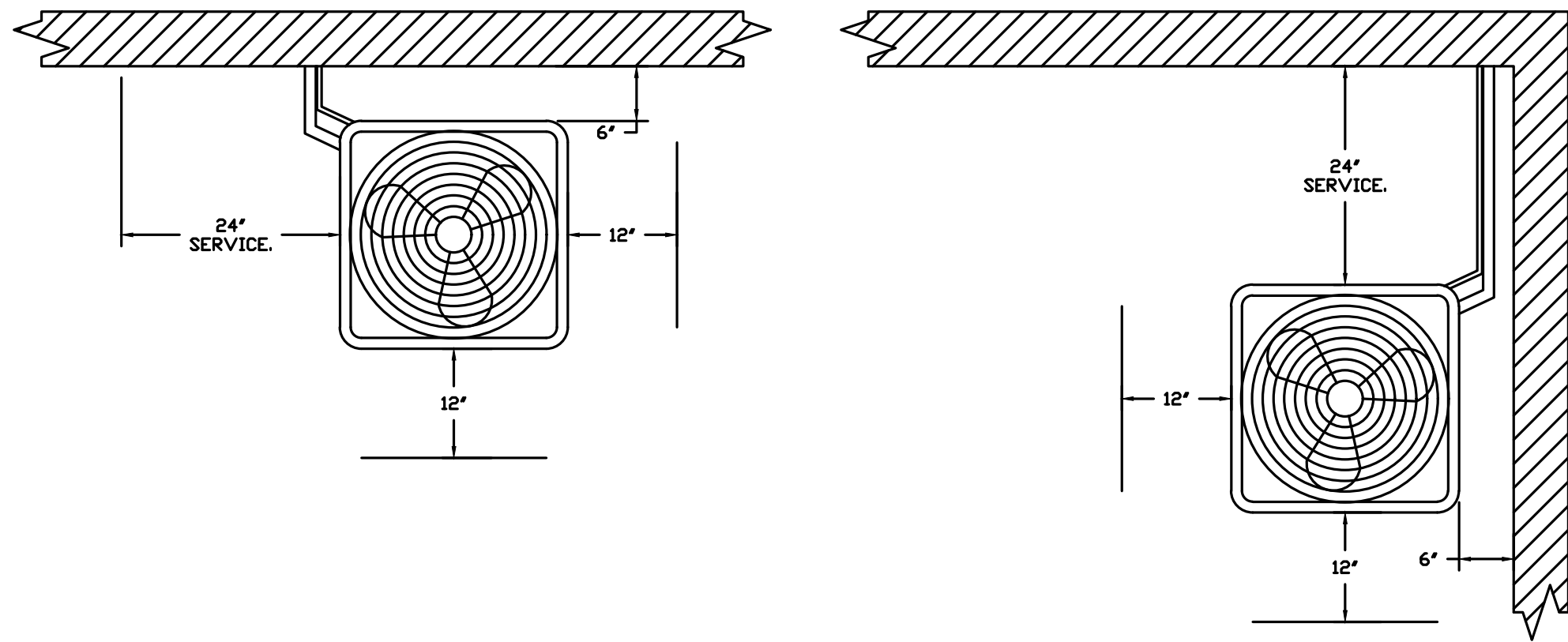
TYPICAL DRAIN TRAP INSTALL.

RECOMMENDED COOLING COIL DRAIN TRAP CONFIGURATION.



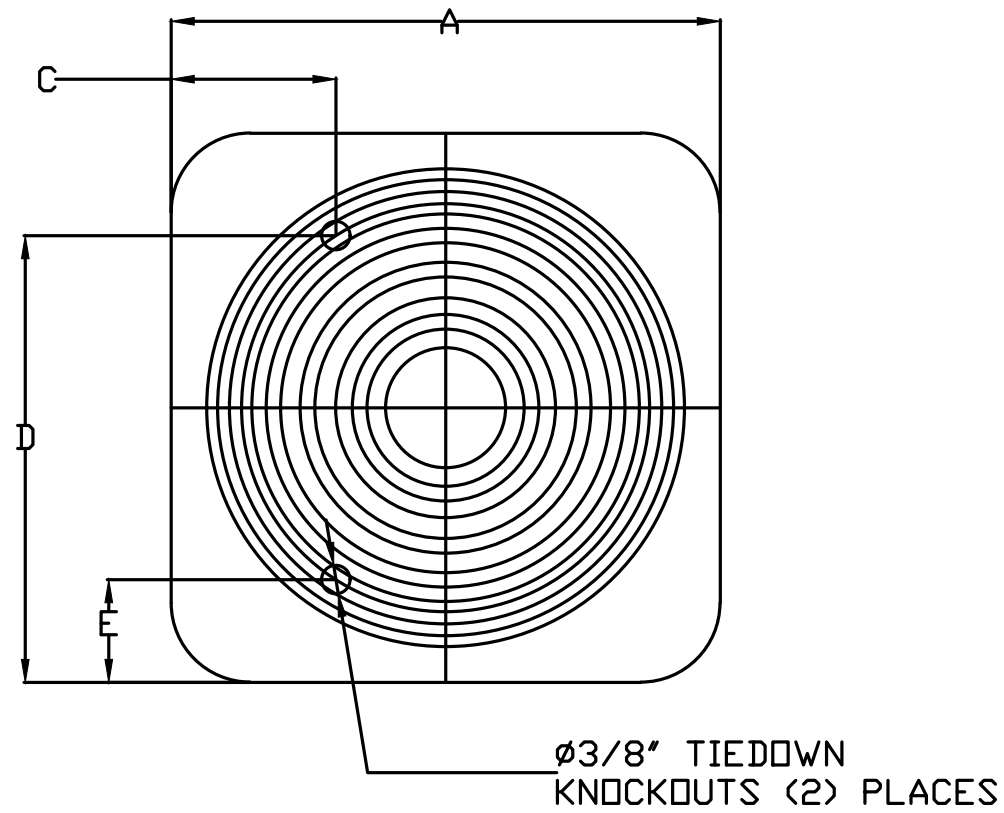
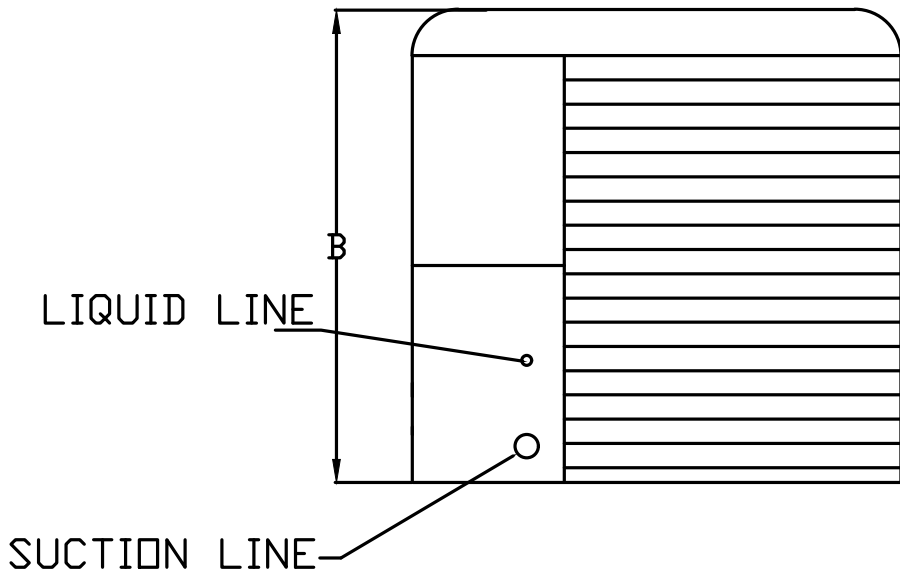
Refer to Plumbing Detail P-500 for AC Unit Condensate Drain

- NOTES, Important: Copper above roof deck where it is exposed. PVC below roof deck
1) 1" DIAMETER PVC PIPE ONLY.
2) USE ONLY LDF PROFILE COUPLINGS.
3) ADD CLEAN OUT AS SHOWN.



CONDENSER CLEARANCES

48" CLEARANCE REQUIRED ABOVE CONDENSERS.
(NOTE: **CONDENSERS SHOWN HERE ARE NOT DRAWN AT SCALE).



ALL DIMENSIONS ARE NOMINAL AND GIVEN IN INCHES.

MODEL	WEIGHT	UNIT DIMENSIONS					CONNECTION SIZES		NOMINAL TONNAGE
		A	B	C	D	E	SUCTION	LIQUID	
24ABB360	190 LBS	31-3/16	25-1/2	9-1/8	24-11/16	6-9/16	7/8	3/8	5

ELECTICAL INFORMATION

MODEL	V-PH	RLA	MCA	FUSE SIZE
24ABB360	208/230-3	16.0	21.4	30

REVISIONS

DESCRIPTION	DATE

Southern California Office
3002 Dow Ave., Suite 410, Tustin, CA 92780 PHONE: (714) 957-1500 FAX: (714) 957-5975 EMAIL: reg86@capitveaire.com

Panda Express - Tampa, FL (D8135)

DATE: 2/18/2021

DWG.#: 4748429

DRAWN BY: AH-86

SCALE: 3/4" = 1'-0"

MASTER DRAWING

SHEET NO. 6



PANDA RESTAURANT GROUP INC.
1683 Walnut Grove Ave.
Rosemead, California 91770
Telephone: 626.799.9898
Facsimile: 626.372.8288

All ideas, designs, arrangement and plans indicated or represented by this drawing are the property of Panda Express Inc. and were created for use on this specific project. None of these ideas, designs, arrangements or plans may be used by or disclosed to any person, firm, or corporation without the written permission of Panda Express Inc.

REVISIONS:

ISSUE DATE:

1	04.29.2021	ISSUE FOR PERMIT
2	06.04.2021	ISSUE FOR BID

DRAWN BY:

SDT

PANDA PROJECT #: - S8-22-D8135
C&P PROJECT #: - 2200775



06.04.2021

PANDA EXPRESS

TRUE WARM AND WELCOME 2300
SKYBROOKE BOULEVARD & STATE ROAD 54
LUTZ, FL 33558

M-405

HOOD DETAIL PLAN

TRUE WARM & WELCOME 2300 R4