

Introduction

When you're on the road, the last thing you want is to find yourself stranded, whether due to a flat tire, an empty gas tank, or a sudden breakdown. In cities like Dallas, where traffic can be relentless and unpredictable, having access to reliable towing services becomes essential. This article will explore everything you need to know about Dallas towing, focusing on how to choose the right emergency service for your needs. We'll delve into the nuances of emergency towing in Dallas, what options are available in towing Dallas TX, and why 24/7 towing in Dallas is a game-changer when you find yourself in a jam.

Understanding Towing Services

What Are Towing Services?

Towing services encompass a range of operations aimed at moving vehicles that are either disabled or parked illegally. Whether it's a minor mishap or something more severe, professional towing services provide essential support.

Types of Towing Services Available

Light Duty Towing: Typically for smaller vehicles such as cars and motorcycles. Medium Duty Towing: For vans and light trucks; ideal for small business owners. Heavy Duty Towing: Designed for larger vehicles like buses and semi-trucks. Flatbed Towing: Vehicles are loaded onto a flatbed truck for transport. Winching Services: For vehicles stuck in ditches or mud.

Why You Need Emergency Towing

Unexpected situations occur on the road—be it an accident or mechanical failure—and emergency towing provides a solution when you're caught off guard.

Dallas Towing at Its Best: How to Choose the Right Emergency Service

Choosing the right emergency towing service can feel overwhelming, especially when you're already stressed about being stranded. Here's how to make an informed decision:



Assess Your Needs

Are you dealing with a small car or a heavy-duty truck? Do you need immediate service or can it wait? What’s your budget?

Research Local Companies

Take the time to look up local towing companies in Dallas. Check their reputation online through customer reviews on platforms like Google, Yelp, and social media.



Verify Credentials

Ensure that any towing company you consider has proper licensing and insurance. A reputable company should be transparent about its certifications.

The Importance of 24/7 Towing in Dallas

Why Choose 24/7 Services?

Accidents don't follow a schedule; they can happen at any hour! Having access to 24/7 towing means help is just a phone call away—no matter if it's day or night.

Benefits of Round-the-Clock Availability

Quick Response Time: The faster help arrives, the less stressful your situation becomes. Peace of Mind: Knowing that assistance is available around the clock offers reassurance during emergencies.

How Much Does Emergency Towing Cost?

Factors Influencing Pricing

Distance: The farther away you are from the towing company, the more you'll likely pay. Vehicle Type: Heavier vehicles usually incur higher costs. Time of Day: Late-night services may come with additional fees.

Average Costs in Dallas

Service Type Average Cost	----- -----	Light Duty Tow \$75 - \$125	Medium Duty Tow \$150 - \$250	Heavy Duty Tow \$250 - \$600
-----------------------------	-------------	-------------------------------	---------------------------------	--------------------------------

Note: These prices can vary based on conditions and specific companies.

Questions to Ask Before Hiring

Before hiring any service provider, it's [Dallas Towing Top Master Hours Of Operation](#) wise to ask pertinent questions:

What's your response time? Are you licensed and insured? Do you have experience with my vehicle type? How do you handle payment? Will there be any hidden fees?

Top Features of Reliable Tow Providers

Professionalism

Look for companies that prioritize customer service through courteous staff and clear communication.

Equipment Quality

A good tow provider should have well-maintained equipment capable of handling your vehicle safely.

Transparency

Make sure they provide clear quotes without hidden charges—trustworthiness goes a long way!

Customer Reviews Matter!

Reading customer reviews offers invaluable insights into what you can expect from a service provider:

Look out for consistency in positive feedback regarding punctuality and service quality. Pay attention to how they handle negative reviews; this speaks volumes about their commitment to customer satisfaction.

Emergency Preparation Tips

While no one anticipates needing emergency towing, preparation helps ease anxiety when circumstances arise:

Keep contact information for local towing services saved on your phone. Ensure your vehicle is regularly maintained to minimize breakdowns. Carry an emergency kit containing water, snacks, flares, and basic tools.

FAQs About Emergency Towing in Dallas

Q1: How quickly can I expect a tow truck after calling?

Typically between 30 minutes to an hour depending on your location and traffic conditions.

Q2: Can I choose where my vehicle gets towed?

Yes! Most companies allow customers to specify their destination within reason.

Q3: Are all types of vehicles eligible for towing services?

Generally speaking yes; however heavier vehicles may require specialized equipment.

Q4: Will my insurance cover towing costs?

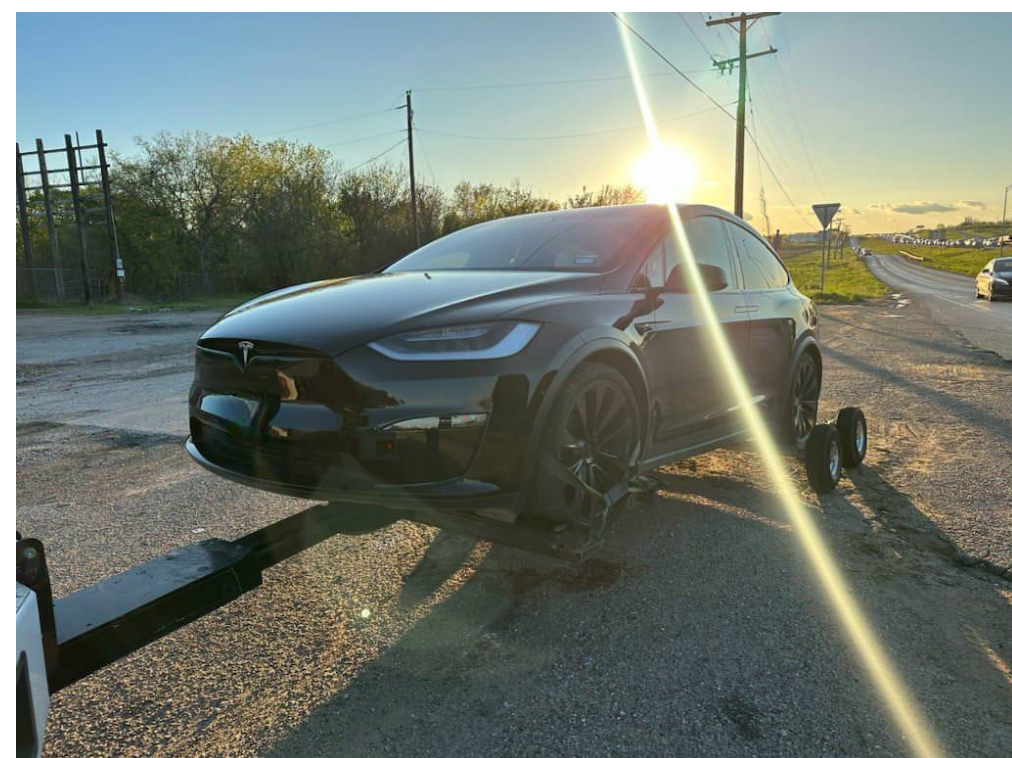
Many policies do cover roadside assistance but check with your insurer before assuming coverage is included.

Q5: What should I do while waiting for my tow truck?

Stay safe by remaining inside your vehicle if possible; turn on hazard lights until help arrives.

Q6: Do I need cash on hand for payment?

Most modern tow companies accept credit cards along with cash—confirm beforehand!





Conclusion

In summary, navigating through unexpected situations requiring emergency towing doesn't have to be daunting if you're prepared and informed about what options exist in Dallas. From understanding different types of services available in Dallas—to knowing what questions to ask potential providers—you can make choices that ensure peace of mind during distressing moments on the road.

Remember that Dallas towing isn't just about moving vehicles; it's about providing essential support when life throws curveballs your way! By opting for reliable services like emergency towing or 24/7 towing, you're making sure help is always just around the corner when needed most.

By following these guidelines laid out throughout "Dallas Towing at Its Best: How to Choose the Right Emergency Service," you'll not only safeguard yourself against unfortunate incidents but also equip yourself with knowledge that'll serve well beyond just roadside assistance!