

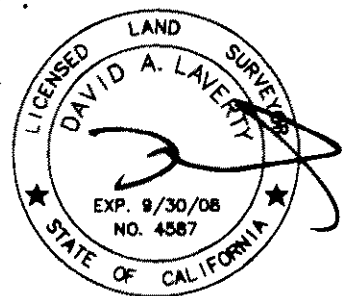
RECORD OF SURVEY NO. 34 - 87 IN THE UNINCORPORATED TERRITORY OF MONO COUNTY, STATE OF CALIFORNIA

BEING A SURVEY OF LOTS 7, 8, 9 & 17 OF VIRGINIA LAKES SUBDIVISION NO. 4
 RECORDED IN MAP BOOK 4, PAGE 47 OF OFFICIAL RECORDS ON FILE IN THE OFFICE OF
 THE SAID COUNTY RECORDER. LOCATED IN THE SOUTHEAST QUARTER OF THE SOUTHEAST
 QUARTER OF SECTION 6, TOWNSHIP 2 NORTH, RANGE 25 EAST, M.D.B.&M.

SURVEYOR'S STATEMENT:

THIS MAP CORRECTLY REPRESENTS A SURVEY MADE
 BY ME OR UNDER MY DIRECTION IN CONFORMANCE
 WITH THE REQUIREMENTS OF THE PROFESSIONAL
 LAND SURVEYOR'S ACT AT THE REQUEST OF
 HIGH COUNTRY REALTY IN JULY, 2007.

DAVID LAVERDY DATE 7/1/08
 L.S. 4587 LIC. EXP. 9-30-08



COUNTY SURVEYOR'S STATEMENT:

THIS MAP HAS BEEN EXAMINED IN ACCORDANCE WITH
 SECTION 8766 OF THE PROFESSIONAL LAND SURVEYORS'
 ACT THIS 15th DAY OF JULY 2008.

MONO COUNTY SURVEYOR
 JOHN S. PARRISH DATE 07-15-08
 LIC. NO. 5050 LIC. EXP. 6-30-10



RECORDER'S STATEMENT:

INSTRUMENT NO. : 2008003610
 FEE : \$8.00

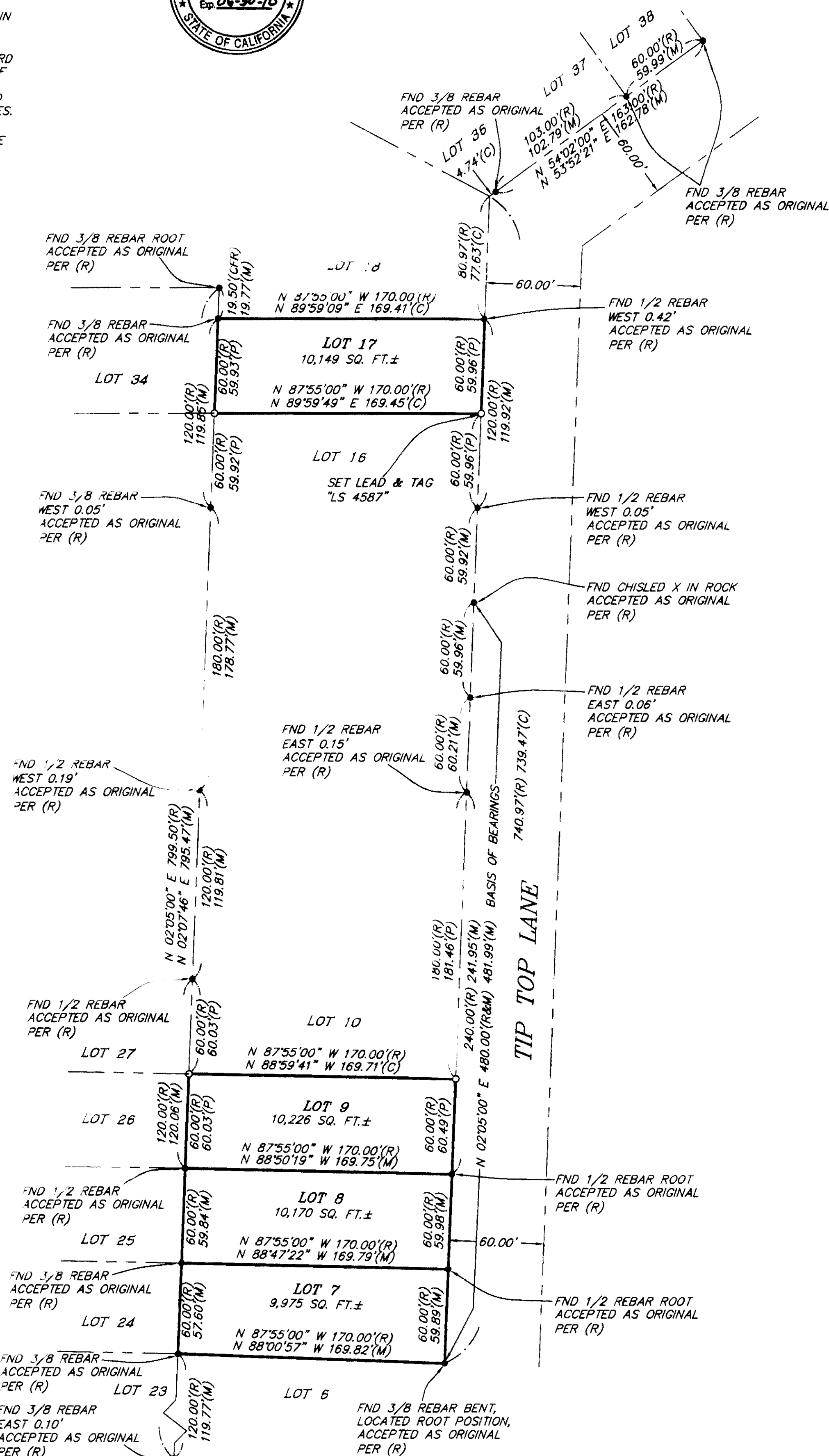
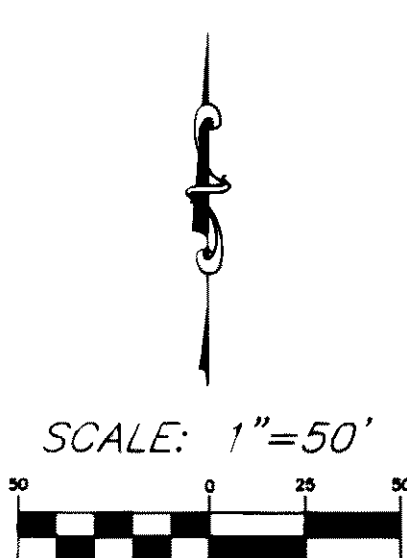
FILED THIS 18th DAY OF JULY 2008,
 AT 9:50 A.M. IN BOOK 4 OF RECORD OF
 SURVEY MAPS AT PAGE 37 AT THE REQUEST
 OF TRIAD/HOLMES AND ASSOCIATES.

LYNDA ROBERTS
 MONO COUNTY RECORDER

BY: Debra VandeBrik
 DEPUTY COUNTY RECORDER

PURPOSE OF SURVEY

THE REASON FOR THIS RECORD OF SURVEY IS AS SET FORTH IN
 THE PROFESSIONAL LAND SURVEYOR'S ACT, ARTICLE 5,
 8762(b2): A MATERIAL DISCREPANCY WITH THE INFORMATION
 CONTAINED IN ANY SUBDIVISION MAP, OFFICIAL MAP, OR RECORD
 OF SURVEY PREVIOUSLY RECORDED OR FILED IN THE OFFICE OF
 THE COUNTY RECORDER OR THE COUNTY SURVEYING
 DEPARTMENT, OR ANY MAP OR SURVEYED RECORD MAINTAINED
 BY THE BUREAU OF LAND MANAGEMENT OF THE UNITED STATES.
 FOR THE PURPOSES OF THIS SUBDIVISION, A "MATERIAL
 DISCREPANCY" IS LIMITED TO A MATERIAL DISCREPANCY IN THE
 POSITION OF POINTS OR LINES, OR IN DIMENSIONS.



LEGEND:

- FOUND MONUMENT AS NOTED
- SET 5/8" REBAR W/CAP "LS 4587" OR AS NOTED
- (R) RECORD
- (M) MEASURED
- (C) CALCULATED
- (CFR) CALCULATED FROM RECORD
- MB MAP BOOK
- FND FOUND
- IP IRON PIPE

RECORD INFORMATION:

(R) = RECORD INFORMATION PER
 MAP BOOK 4, PAGE 47

BASIS OF BEARINGS

THE BASIS OF BEARINGS IS THE WEST LINE
 OF TIP TOP LANE BETWEEN TWO FOUND
 MONUMENTS PER RECORD OF SURVEY MAP
 BOOK 4, PAGE 47 AND IS SHOWN HEREON
 AS N 02°05'00" E.